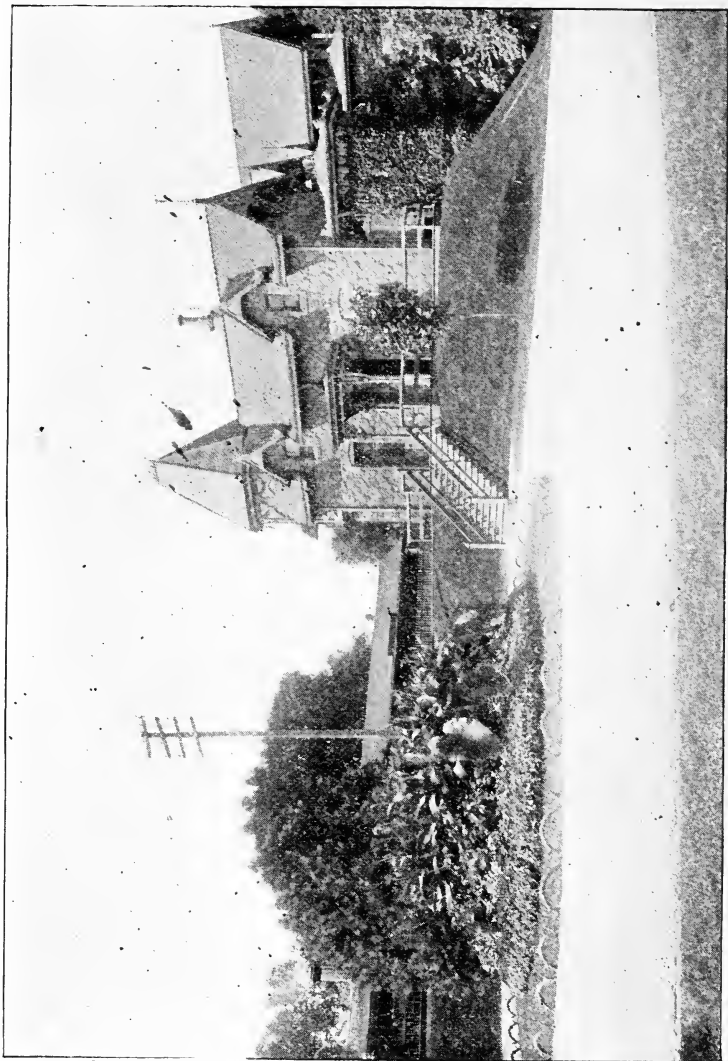






01-21513





A TYPICAL SUBURBAN STATION.



# SUBURBAN HOMES

ON THE LINES OF THE

# PENNSYLVANIA RAILROAD

WITHIN A RADIUS OF

THIRTY MILES AROUND PHILADELPHIA,

WITH

USEFUL INFORMATION FOR SUMMER-HOME SEEKERS.

✓  
4  
G. H. B.  
Car.

⊕



26702 2'

PASSENGER DEPARTMENT.

1894.

G. H. B.

—|—

---

PRINTED BY  
ALLEN, LANE & SCOTT,  
PHILADELPHIA.

---

T 104  
185  
A1

## EXPLANATION OF COMMUTATION TICKETS,

### THEIR USE AND LIMIT.

---

FAMILY TICKETS are good for fifty rides within one year from date of issue, and may be used either by the purchaser or members of the purchaser's immediate family, or domestics regularly employed therein.

FIRM TICKETS (sold at same rates as family tickets) are good for fifty rides within one year from date of issue, and may be used by not more than three designated members or employés of a business house, whose names must appear on the face of ticket.

ONE-HUNDRED-AND-EIGHTY-TRIP QUARTERLY TICKETS are issued for the transportation of the purchaser only for any three successive calendar months.

MONTHLY TICKETS, good for sixty trips, are issued for the transportation of the purchaser only during the calendar month for which issued.

SCHOOL TICKETS, good for forty-six trips, bear the same privileges and restrictions as *Monthly Tickets*, and are issued only to those attending a public or private school or academy, for use exclusively in going to and returning therefrom.

EXCURSION TICKETS referred to in the following pages, expiring on Sunday, are good for passage on the following Monday.

One-Hundred-and-Eighty-trip Quarterly, Sixty-trip Monthly, and Forty-six-trip School Tickets can be purchased on the last five days of the preceding month and the first fifteen days of the current month.

Fifty-trip Family or Firm Tickets can be procured at any time.

NOTE.—None of the above-described tickets bear stop-over privileges.



SUBURBAN HOMES  
ON THE  
PENNSYLVANIA RAILROAD  
AND BRANCHES.

---

NO section of the United States is richer in suburban homes than that of which Philadelphia is the centre. The outlying region in Pennsylvania is elevated, excellently watered, renowned for healthfulness, and celebrated for picturesque beauty, while the portion of New Jersey within suburban distance of the city presents all the advantages that the out-of-town resident could demand.

In addition to its natural endowments, this entire territory, in its present state of development, affords every requisite that could contribute to the comfort and convenience of the summer colony. Beautiful villas dot the landscape at every hand, where the business man lives during the heated term ; picturesque hotels offer luxurious accommodations to those whose means are commensurate with their tastes ; excellent boarding-houses offer less pretentious quarters ; while the country house promises the quiet of a rural life, sustained by the fresh products of the kitchen-garden. Thus every class may live in a state suited to its condition, while all, rich and poor alike, may revel in those natural blessings of pure air, pure water, and rural beauty.

All these advantages, however, would be beyond the reach of the masses, were it not for the magnificent facilities of communication existing between the city and its suburbs. In this regard no city of the Union is better equipped than Philadelphia. The comprehensive suburban service inaugurated, developed, and maintained by the Pennsylvania Railroad brings every portion of this territory in direct and frequent communication with the heart of the city. The lines radiate as the spokes from a wheel, each line punctuated at short intervals with stations, at whose platforms trains stop and start at the most convenient hours of the day. The service itself is conducted on the highest plane of any similar service in the world. On every division frequent local trains are run on a schedule best adjusted to the needs of local travelers. These trains are equipped in the same style and manner as through express trains; their speed between stations is fully up to the standard, and, in order to promote their mission of making rapid transit, they are given the right of way over all other trains within their proper terminals.

Under these conditions the suburban resident may, in many cases, reach his rural home while his less fortunate city brother is still plodding homeward by slower means of transportation.

Another very potent factor in the development of suburban traffic, and one which appeals most strongly to the consideration of dwellers within the city, is the very low rate of fare that prevails on all the lines and branches of the Pennsylvania Railroad. Various classes of tickets are sold, from the little bit of tough cardboard entitling the holder to one ride, through all the gradations of excursion tickets—monthly, quarterly, family, and school—all sold at a rate that places them within the purse-power of every class of people. The commutation rates, considering the quality of the service, have been reduced to the lowest figure at which passengers can be carried with any per-

centage of profit. With a surrounding district as attractive and inviting as this, reinforced by exceptional facilities of transportation that may be enjoyed at the smallest expense, there is no reason why the humblest citizen may not pass at least a few weeks of the summer among the fields, hills, and flowers of the country.

For their guidance in selecting summer quarters, the following brief sketches of the various places, with a directory of summer inns and boarding houses on the suburban lines of the Pennsylvania Railroad and its branches, have been prepared. The statistics have been collected with great care, and no effort has been spared to make them as complete and reliable as the circumstances admit.

The accompanying map will also serve to fix more clearly the location of each station to which reference is made.

PHILADELPHIA, May 10th, 1894.





# PENNSYLVANIA RAILROAD.

---

## *PHILADELPHIA DIVISION.*

---

### GIRARD AVENUE, PHILADELPHIA.

Distance, 3.2 miles. 27 trains each way on week-days; 30 on Sundays.

Running time, 10 minutes. Fare, 10 cents; 14 strip tickets for \$1.

Although situated near the extreme north-western section of the city this neighborhood is thickly populated. The Lansdowne Apartment House is located nearby, and is fitted in the most highly-approved style, with a view to compete with other houses of a similar character in the centre of town. The Fortieth Street Station, however, is the nearest point of access to Broad Street for patrons of the house. The Y. M. C. A. Athletic Grounds, the Colored Home for the Aged, the Mother of Sorrows Church, and the Roman Catholic Cathedral Cemetery are objects of quite an interest to the visitor. Fairmount Park has a picturesque entrance about two blocks north of the tracks of the Pennsylvania Railroad.

### FIFTY-SECOND STREET, PHILADELPHIA.

Distance, 4 miles. 44 trains each way on week-days; 34 on Sundays.

Running time, 11 minutes. Fare, 10 cents; 14 strip tickets for \$1.

This is the junction of the Main Line and Schuylkill Divisions of the Pennsylvania Railroad, and the first point in the direction that partakes of a suburban nature. West from here the country assumes a truly rural appearance, increasing in this respect at every step. The grounds of the P. R. R. Athletic Association are located opposite the station. Base-ball, cricket, tennis, and various track contests are

waged therein, and prove a decided attraction during the mild months of the year. The George Library, an institution very complete in its way, is an interesting feature. Jesse George, of George's Hill fame, donated the building and its contents.

The Park Drove Yard Hotel is within a minute's walk of the station, and offers accommodations at moderate rates. There are also several other smaller boarding-places in the vicinity.

### OVERBROOK, PA.

Distance, 5.5 miles. 29 trains each way on week-days; 20 on Sundays.

Running time, 15 minutes. Fare, 17 cents; 2-day excursion rate, 28 cents. Family tickets, \$5.70; quarterly, \$11.75; monthly, \$4.35; school, \$2.90.

The line dividing Philadelphia and Montgomery counties runs directly through and within the bounds of the station here. The country at this point takes on a decidedly genuine aspect, and, although there are many handsome houses and properties in close proximity, the suburbanite is fully satisfied in the desire for open country. Improvements of all kinds have been made during the past few years, conspicuous amongst which are the extensive operations projected by the Drexel-Childs estates. This vast undertaking will result in the building of about two hundred and fifty houses, calculated to sell at from ten to thirty thousand dollars. A separate community, with exclusive sanitary and other advantages, including the unique idea of co-operative house-keeping facilities, will be established in compliance with the original and novel plans of the late two great promoters of public welfare. Between Overbrook and Merion is the seat of St. Charles Borromeo College, a well-known Catholic institution for the training of its students for priesthood.

### MERION, PA.

Distance, 5 miles. 28 trains each way on week-days; 20 on Sundays.

Running time, 17 minutes. Fare, 18 cents; 2-day excursion rate, 30 cents. Family tickets, \$6.20; quarterly, \$12.20; monthly, \$4.50; school, \$3.

Open and beautiful rolling country, splendid country houses of the most modern type, fine roads, and unequalled facilities are some of the highly-alluring and well-substantiated attractions of this aristocratic

suburb, which numbers among its inhabitants some of our most prominent citizens. The Convent of the Sisters of Mercy, at which special attention is given to teaching music, is nearby. The summer inn, classified below under a new name and management, has been renovated and improved, and will afford all the conveniences and attractions of a first-class hostelry.

**BROOKHURST INN.**—Mrs. Chas. E. Dakin. One mile from station. Accommodations for one hundred guests. Rates, \$15 to \$25 per week.

### NARBERTH, PA.

Distance, 6.9 miles. 29 trains each way on week-days; 20 on Sundays.

Running time, 19 minutes. Fare, 21 cents; 2-day excursion rate, 35 cents. Family tickets, \$7.10; quarterly, \$12.95; monthly, \$4.80; school, \$3.20.

This place has recently taken some pronounced steps forward, and at the present time it may truly be said that there are inducements of all kinds for the prospective resident. While there are not so many houses of the larger kind, there are a great many most desirable properties of more or less pretensions and plenty of room for a large increase. The Belmont Driving Association grounds are situated about a mile north of the station, and are easily reached this way by those without conveyances.

**BOARDING-HOUSE.**—Mrs. Elizabeth Coffin. Three minutes' walk from station. Rates, \$5 to \$7 per week.

**GENERAL WAYNE HOTEL.**—A wayside inn for daily transient guests, resorted almost exclusively by the driving fraternity.

### WYNNEWOOD, PA.

Distance, 7.5 miles. 29 trains each way on week-days; 20 on Sundays.

Running time, 21 minutes. Fare, 23 cents; 2-day excursion rate, 38 cents. Family tickets, \$7.70; quarterly, \$13.40; monthly, \$4.95; school, \$3.30.

The population of five hundred is widely distributed over this quarter, thus maintaining the idea of country in a most realistic sense. Good drives abound in every direction, and numerous elegant mansions surrounded by spacious grounds emphasize in their appearance the wealth of their owners.

## ARDMORE, PA.

Distance, 8.5 miles. 32 trains each way on week-days; 20 on Sundays.  
 Running time, express 14 minutes, accommodation 24 minutes. Fare, 26 cents; 2-day excursion rate, 43 cents. Family tickets, \$8.70; quarterly, \$14.15; monthly, \$5.25; school, \$3.50.

Ardmore is a most enterprising little town of nearly three thousand souls, and boasts of conveniences which much larger places are lacking. It has gas, electric light, three churches, a high school, a bank, a club-house, a Masonic hall, and, in fact, everything pertaining to advanced civilization. Like all the points on this model division of the railroad, its connection with the city is amply provided for in the shape of telegraphic, telephonic, and mail communications. Well-built, snug homes are in the greatest profusion, and plainly attest the efforts of the citizens in the worthy endeavor to excel other communities. The Red Lion Inn, over a hundred years old, on the Lancaster Pike, which parallels the railroad for miles, is an old wayside house of historic interest.

BOARDING-HOUSE.—Mrs. Neilson. Five minutes' walk from station. Rates, \$7 to \$12 per week.

BOARDING-HOUSE.—Mr. Stark. Five minutes' walk from station. Rates, \$7 to \$12 per week.

BOARDING-HOUSE.—Miss Thompson. Five minutes' walk from station. Rates, \$7 to \$12 per week.

BOARDING-HOUSE.—Miss Buist. Ten minutes' walk from station. Rates, \$7 to \$12 per week.

## HAVERFORD, PA.

Distance, 9.2 miles. 32 trains each way on week-days; 20 on Sundays.  
 Running time, express 15 minutes, accommodation 26 minutes. Fare, 28 cents; 2-day excursion rate, 46 cents. Family tickets, \$9.40; quarterly, \$14.60; monthly, \$5.40; school, \$3.60.

On all sides is Haverford suggestive of taste and refinement. Well kept roads and lawns and cultivated vegetation please the eye wherever it rests. Haverford College, an institution noted far and wide for its standing in educational circles, has its site here. The Merion Cricket Club's magnificent club-house and grounds are within a block of the station, and lend an attraction of considerable interest.

BOARDING-HOUSE.—Mrs. T. J. Oram. Five minutes' walk from station. Accommodations for ten guests. Rate, \$8 to \$15 per week.

SPRING LAWN.—Mrs. A. W. Smith. Five minutes' walk from station. Accommodations for twenty guests.

## BRYN MAWR, PA.

Distance, 10.2 miles. 33 trains each way on week-days; 20 on Sundays.

Running time, express 19 minutes, accommodation 29 minutes. Fare, 31 cents; 2-day excursion rate, 51 cents. Family tickets, \$10.40; quarterly, \$15.40; monthly, \$5.70; school, \$3.80.

The attractions of this place are manifold and varied. Certainly with no superiors it has few equals as a suburban resort. The picturesque scenery and high location have been important factors in establishing its popularity. Bryn Mawr College, an institution exclusively devoted to the education of females, and famous throughout the country, is claimed by the place and justly boasted of as being one of the foremost of its kind in the United States.

The Bryn Mawr Hotel is within a stone's-throw of the handsome station, and is a commodious and luxurious hostelry of the latest pattern. It is sumptuously furnished and fitted. During its season, which is from June 1st until November 1st, the guests are entertained by a celebrated orchestra. The hotel accommodates three hundred people.

BRYN MAWR HOTEL.—Miss Simmins. Two minutes from station. Accommodations for three hundred guests.

SUMMIT GROVE HOUSE.—Isaac H. Evans. Five minutes' walk from station. Accommodations for eighty guests.

BOARDING-HOUSE.—Mrs. B. P. Humphreys. Five minutes' walk from station. Accommodations for eighty guests. Rates, \$15 to \$25 per week.

HAVERFORD HOUSE.—Samuel H. Bowman. Accommodations for fifty guests.

BOARDING-HOUSE.—Miss Hawkins. Accommodations for twenty-five guests.

BOARDING-HOUSE.—J. T. McBride. Five minutes' walk from station. Accommodation for twenty-five guests.

## ROSEMONT, PA.

Distance, 10.9 miles. 29 trains each way on week-days; 19 on Sundays.  
 Running time, express 19 minutes, accommodation 29 minutes. Fare, 32 cents; 2-day  
 excursion rate, 54 cents. Family tickets, \$11; quarterly, \$16.20;  
 monthly, \$6; school, \$4.

This is one of the finest places along the line. Its location on natural eminences, close to the macadamized turnpike, has in a great measure been instrumental in the commanding position it holds in suburban properties. Most of the houses are built on the south side of the track, having an entrance or drive from the pike. They are principally all large mansions erected with apparent disregard to cost. There are some few smaller homes on the north, towards Bryn Mawr, in a pretty little colony by themselves.

HARMAN HOUSE.—Mr. William Harman. One-half mile from station. Accommodations for seventy-five guests.

## VILLA NOVA, PA.

Distance, 12.0 miles. 29 trains each way on week-days; 19 on Sundays.  
 Running time, express 25 minutes, accommodation 32 minutes. Fare, 36 cents; 2-day  
 excursion rate, 60 cents. Family tickets, \$12.20; quarterly, \$17.05;  
 monthly, \$6.30; school, \$4.20.

The college here, after which the station is named, and St. Thomas' church, with its towering spires, are strikingly conspicuous. The architecture of the latter is quite bold, and gives the place an unusually distinguished appearance. There are some few large houses back from the railroad.

## UPTON, PA.

Distance, 12.4 miles. 28 trains each way on week-days; 19 on Sundays.  
 Running time, express 27 minutes, accommodation 34 minutes. Fare, 37 cents; 2-day  
 excursion rate, 62 cents. Family tickets, \$12.60; quarterly, \$17.40;  
 monthly, \$6.45; school, \$4.30.

The surrounding country is quite attractive at this point, and should prove fully as advantageous for the building of houses as that outlying sister stations. The situation in the heart of a district so highly developed cannot but influence its growth.

BOARDING-HOUSE.—Wm. Zell. Seven minutes from station. Accommodations for twelve persons. Rates, \$5 and \$6.

## RADNOR, PA.

Distance, 13 miles. 29 trains each way on week-days; 19 on Sundays.  
Running time, express 29 minutes, accommodation 36 minutes. Fare, 39 cents; 2-day excursion rate, 65 cents. Family tickets, \$13.20; quarterly, \$17.80; monthly, \$6.60; school, \$4.40.

This section of the country is exceedingly rustic and picturesque. The houses, which are substantial and handsome, are widely scattered, giving, in their individual isolation, an effect particularly gratifying to their owners and beholders, and yet the idea of careful cultivation is carried out most faithfully. Back from the station is a large natural gulf or cleft in the surface of the earth, through which a tiny stream winds its way. An old gristmill was built here in 1747 and is still pluckily running. This exact spot was the scene of a skirmish between the redcoats and our Revolutionary heroes, under the command of General Washington.

BOARDING-HOUSE.—Wm. J. Frame. One and a half miles from station. Accommodations for eight persons. Rates, \$5 and \$6 per week.

## ST. DAVID'S, PA.

Distance, 13.8 miles. 29 trains each way on week-days; 19 on Sundays.  
Running time, express 24 minutes, accommodation 38 minutes. Fare, 41 cents; 2-day excursion rate, 69 cents. Family tickets, \$14; quarterly, \$18.65; monthly, \$6.90; school, \$4.60.

The exquisite taste noticeable here on the slightest observation, in the construction of the houses and the landscaping, reflects great credit alike on builder and occupant. This pretty settlement is immediately contiguous to its big neighbor on the west,—Wayne,—the properties on its border in this direction being shadowed by those in the last-mentioned suburban town.

BOARDING-HOUSE.—Mrs. Wm. Garber. Two minutes' walk from station. Accommodations for twelve guests. Rates, \$8 to \$10 per week. Open all year.

## WAYNE, PA.

Distance, 14.6 miles. 29 trains each way on week-days; 19 on Sundays.  
Running time, express 25 minutes, accommodation 40 minutes. Fare, 44 cents; 2-day excursion rate, 73 cents. Family tickets, \$14.80; quarterly, \$19; monthly, \$7.05; school, \$4.70.

The prestige commanded by this highly progressive place is thoroughly deserved, and worthy of the consideration of many other

suburbs which aim to attain the appreciation and attention of home-seekers. Everything possible is tried in the steps of advanced methods which have proved beneficial to a rising community, and the successful accomplishment of this enterprising spirit can unmistakably be seen by the conclusive evidence of its phenomenal growth. The population now numbers twenty-five hundred. A large electric plant supplies the homes and town with light, and a steam-heating plant with heat. Five churches of various denominations are within short distance of the station. There is also a flourishing title and trust company in active operation, a public school, a spacious club-house for social amusement, with well-kept grounds surrounding it for cricket, tennis, and all outdoor sports, and a public hall for plays, lectures, &c.

LOUELLA MANSION.—Miss Elizabeth R. Boughter. Two minutes' walk from station. Accommodations for one hundred guests. Open May to November. Rates, \$20 to \$40 per week.

HOTEL BELLEVUE.—Mrs. M. B. Field. Four minutes' walk from station. Accommodations for two hundred guests. Rates, \$15 to \$35 per week. Open May to November.

MT. PLEASANT HOUSE.—Col. T. W. Baker. One mile from station. Accommodations for twenty-two persons. Rates, \$8 to \$12. Open June to November.

BOARDING-HOUSE.—Mrs. M. E. Singer. Five minutes from station. Accommodations for fifteen guests. Open all the year. Rates, \$8 to \$15 per week.

## STRAFFORD, PA.

Distance, 15.5 miles. 29 trains each way on week-days; 19 on Sundays. Running time, express 29 minutes, accommodation 43 minutes. Fare, 47 cents; 2-day excursion rate, 78 cents. Family tickets, \$15.70; quarterly, \$19.85; monthly, \$7.35; school, \$4.90.

Strafford, with its pretty name and tastefully-built colonial cottages, marks the spot where in years gone by travelers to and from Philadelphia were entertained and rested over night in its old wayside inn and tavern. Tradition alone remains of these old days. It is now one of the handsomest suburbs of Philadelphia, honored with an increasing patronage each succeeding year.



## DEVON, PA.

Distance, 16.5 miles. 29 trains each way on week-days; 19 on Sundays.  
 Running time, express 31 minutes, accommodation 45 minutes. Fare, 50 cents; 2-day  
 excursion rate, 83 cents. Family tickets, \$16.70; quarterly, \$20.65;  
 monthly, \$7.65; school, \$5.10.

Like other towns along the historic Lancaster turnpike, it holds sacred the many old landmark houses scattered here and there which bear testimony to their old age, and are so closely allied with the history of the State. The advance of time and invention has created a marvelous change, and now, almost on the same ground, stands a magnificent modern inn, with its costly furnishings, large halls, and even an orchestra day and evening during its season.

Recognizing the advantages of the site, the pure air and conveniences, the founders of two homes for the sick have adopted Devon for the execution of their purpose.

DEVON INN.—Mr. G. J. Waters. Three hundred yards from station. Accommodations for two hundred and fifty guests. Rates, \$17 to \$60 per week. May 15th to October 15th.

BOARDING-HOUSE. - Mrs. W. B. Miller. Five minutes' walk from station. Accommodations for eight persons. \$10 to \$15 per week. May 15th to October 15th.

## BERWYN, PA.

Distance, 17.5 miles. 29 trains each way on week-days; 19 on Sundays.  
 Running time, express 34 minutes, accommodation 48 minutes. Fare, 53 cents; 2-day  
 excursion rate, 88 cents. Family tickets, \$17.50; quarterly, \$21.50;  
 monthly, \$7.95; school, \$5.30.

Delightfully situated on an eminence, and with other exceptional advantages, the rapid development and well-earned popularity of Berwyn are but the natural results of what location backed with enterprise can accomplish. The place advances its just claim for a continuance of popular favor, and offers in its pretty cottages, fine building sites, healthfulness, and the best facilities, highly attractive inducements to those contemplating either temporary or permanent residence in a country place with the best of city conveniences.

FAIRVIEW HALL.—Mrs. Jos. Petery. Three minutes from station. Accommodations for thirty guests. Rates moderate. Opens May 1st.

WYNNEBURN INN.—Mrs. W. B. Dallam. Quarter mile from station. Accommodations for seventy guests. Rates, \$10 to \$15 per week. Open May 15th to October 31st.

WILLOW DALE.—Mr. W. W. Downing. One and a quarter miles from station. Accommodations for forty-five guests. Rates, \$6 to \$10 per week.

KROMER'S HOTEL.—Mr. J. F. Kromer. Two minutes from station. Accommodations for fifty guests. Rates, \$5 to \$10 per week. Open all year.

HAYMAN HOUSE.—Miss Maggie Hayman. Three minutes from station. Accommodations for ten guests. Rates, \$6 to \$12 per week.

MAPLE COTTAGE.—Mrs. Jos. Petery. Seven minutes from station. Accommodations for ten guests.

BUTTONWOOD SPRING.—Mrs. H. E. Longnecker.

## DAYLESFORD, PA.

Distance, 18.6 miles. 26 trains each way on week-days; 18 on Sundays. Running time, express 44 minutes, accommodation 51 minutes. Fare, 56 cents; 2-day excursion rate, 93 cents. Family tickets, \$18.80; quarterly, \$22.30; monthly, \$8.25; school, \$5.50.

As yet Daylesford is but little developed; but, judging from the growth of other stations with even less advantages, it is safe to predict a bright future for what is really a very desirable and exceedingly pretty stretch of country.

## PAOLI, PA.

Distance, 19.9 miles. 29 trains each way on week-days; 19 on Sundays. Running time, express 37 minutes, accommodation 53 minutes. Fare, 60 cents; 2-day excursion rate, \$1. Family tickets, \$20.10, quarterly, \$23.50; monthly, \$8.70; school, \$5.80.

Paoli is a sort of terminus for local trains between here and the city, as further west the service is not so frequent, though it is equal to the demand. Up to this point the scenery is comparatively tame, owing in some extent to excessive cultivation. Here the country bursts forth in all its original grandeur, increasing with each stride. The beautiful Chester Valley can be seen from the station, which reaches

the elevation of nearly six hundred feet above tidewater. The settlement boasts of two churches, a school, and a town hall.

PAOLI INN.—Miss Jardines. Accommodations for seventy-five guests.

THE EVERGREEN.—Mrs. J. H. Rennard. Accommodations for thirty-five persons.

### GREEN TREE, PA.

Distance, 21 miles. 14 trains each way on week-days; 8 on Sundays.

Running time, express 43 minutes, accommodation 54 minutes. Fare, 63 cents; 2-day excursion rate, \$1.05. Family tickets, \$21.10; quarterly, \$24.30; monthly, \$9; school, \$6.

A few steps from the station here, and a grand view of the Chester Valley, which runs nearer the railroad as it extends westward, is disclosed, but, apart from the highly esteemed proximity of this piece of perfect farm land, the place presents its own charms.

BOARDING-HOUSE.—Mrs. Jno. Hughes. Accommodations for twenty-five guests. Rates, \$6 to \$10 per week. Immediately opposite station.

DUFFRYN MAWR.—Mr. Alfred Mullen. One minute's walk from station. Accommodations for forty guests. Rates, \$7 to \$10 per week.

### MALVERN, PA.

Distance, 21.6 miles. 14 trains each way on week-days; 8 on Sundays.

Running time, express 42 minutes, accommodation 58 minutes. Fare, 65 cents; 2-day excursion rate, \$1.08. Family tickets, \$21.80; quarterly, \$24.70; monthly, \$9.15; school, \$6.10.

In the neighborhood of what is now a quiet, pretty place is the historic Paoli battle-ground. It was here an entire company of Washington's soldiers, with the exception of a drummer boy, who escaped by hiding in a tree, was massacred by the British. It is now quite a popular place and steadily increasing in size each year.

MANSION HOUSE.—J. C. Hatton. One minute's walk from station. Accommodations for ten persons.

BOARDING-HOUSE.—Mrs. A. W. Lewis. Five minutes' walk from station. Accommodations for fifteen guests. Rates, \$8 to \$12 per week.

BOARDING-HOUSE.—Mr. John Detwiler. Five minutes from station. Open May 15th to October 1st.

FARM HOUSE.—Mrs. A. W. Montgomery. Fifteen minutes' walk from station. Accommodations for eighteen guests. Rates, \$6 to \$10 per week.

FARM HOUSE.—Mrs. M. A. Gilbert. Fifteen minutes' walk from station. Accommodations for six guests. Rates, \$6 per week. Open June to October.

## FRAZER, PA.

Distance, 23.9 miles. 18 trains each way on week-days; 9 on Sundays.

Running time, express 45 minutes, accommodation 1 hour and 5 minutes. Fare, 71 cents; 2-day excursion rate, \$1.19. Family tickets, \$24; quarterly, \$26.75; monthly, \$9.90; school, \$6.60.

A junction point for both the West Chester and the Phoenixville branches, the former going off to the south, and the latter to the north.

The fickleness of Dame Fortune is illustrated in the birth and subsequent development of Frazer. With the superior advantages of being quite a railroad centre, together with its rural fascinations, it has not grown with anything like the rapidity of other points. It surely must take a decided move in the proper direction before long, as its attractions will sooner or later become manifest.

LINDEN HALL.—Jno. H. Storm. Five minutes' walk from station. Accommodations for twenty guests. Rates, \$7 to \$10 per week. Open May 15th to November 15th.

BOARDING-HOUSE.—Jno. H. Rudolph. Fifteen minutes' walk from station. Accommodations for six guests. Rates, \$7 per week. Open June to September.

BOARDING-HOUSE.—Miss Meredith and sister. Fifteen minutes' walk from station. Accommodation for eight guests. Open May to September.

FARM HOUSE.—Mrs. E. Williams. One mile from station. Accommodations for ten guests. Rates, \$5 to \$7 per week. Open June to November.

FARM HOUSE.—Mrs. M. E. Wilson. Two miles from station. Accommodations for thirty guests. Rates, \$5 to \$6 per week. Open May to November.

BOARDING-HOUSE.—Mrs. E. L. Corson. One-half mile from station. Accommodations for six guests. Rates, \$5 per week. May to November.

## GLEN LOCH.

Distance, 25.3 miles. 10 trains each way on week-days; 4 on Sundays.

Running time, express 45 minutes, accommodation 1 hour 7 minutes. Fare, 76 cents;  
2-day excursion rate, \$1.27. Family tickets, \$25.50; quarterly,  
\$27.95; monthly, \$10.35; school, \$6.90.

The Chester Valley, with its vari-colored farms and restful homes, looks like one vast, magnificent garden from this spot. The Trenton Cut-off branch of the Pennsylvania Railroad, skirting the southern boundary of the valley, strikes the Main Line here. Glen Loch has a population of about seven hundred, who certainly enjoy unusual natural advantages.

## SHIP ROAD, PA.

Distance, 26.6 miles. 8 trains each way on week-days; 3 on Sundays.

Running time, express 56 minutes, accommodation 1 hour 8 minutes. Fare, 80 cents;  
2-day excursion rate, \$1.33. Family tickets, \$26.80; quarterly,  
\$28.75; monthly, \$10.65; school, \$7.10.

A village at the present time, but with its fine situation overlooking many miles of picturesque country, and its nearness to the city, it is destined to grow up with its neighbors.

## WHITELAND, PA.

Distance, 27.4 miles. 9 trains each way on week-days; 3 on Sundays.

Running time, express 1 hour, accommodation 1 hour 12 minutes. Fare 82 cents;  
2-day excursion rate, \$1.37. Family tickets, \$27.60; quarterly,  
\$29.60; monthly, \$10.95; school, \$7.30

Like Ship Road, this place, although located within the bounds of a charming region, is unsettled to any great degree in comparison with the other points on the division, yet its eligibility must assert itself in time.

## WHITFORD, PA.

Distance, 28.4 miles. 9 trains each way on week-days; 4 on Sundays.

Running time, express 53 minutes, accommodation 1 hour 14 minutes. Fare, 85 cents;  
2-day excursion rate, \$1.42. Family tickets, \$28.60; quarterly,  
\$30.35; monthly, \$11.25; school, \$7.50.

In the midst of a noted agricultural district, Whitford offers a rare chance for a pleasant summer retreat. It has made quite a start in the direction of becoming better known, and with the facilities of larger places its ultimate prominence is anticipated.

## BRADFORD HILLS, PA.

Distance, 29.8 miles. 9 trains each way on week-days; 4 on Sundays. Running time, express 53 minutes; accommodation, 1 hour 17 minutes. Fare, 89 cents; 2-day excursion rate, \$1.49. Family tickets, \$30; quarterly, \$31.60; monthly, \$11.70; school, \$7.80.

At this point, as the name implies, the land is exceedingly high and hilly. On the wooded hills north of the tracks are built some very pretty houses, and from their immense height can be seen the magnificent panorama of the Chester Valley for miles, as it sweeps along below in all its beauty. The attractiveness of the place certainly merits general attention and appreciation as a point fully qualified to answer the needs of a beautiful retreat. It is truly a delightful place, and renowned for its purity of air and water.

## DOWNTOWN, PA.

Distance, 32.4 miles. 12 trains each way on week-days; 6 on Sundays. Running time, express 53 minutes, accommodation 1 hour and 22 minutes. Fare 98 cents; 2-day excursion rate, \$1.62. Family tickets, \$32.60; quarterly, \$33.60; monthly, \$12.45; school, \$8.30.

Downtown stretches out in the shape of a cross in the centre of a most fertile and pretty country. An arm of the romantic Brandywine Creek flows through the town, and divides it in two. This natural separation is used as a municipal division of its two wards. It is a thriving, enterprising community, adopting the newest ideas with eagerness and yet with conservatism, until ample proof of their worth has been demonstrated. Every convenience of a large city is afforded the resident and sojourner.

Churches, public schools, and good stores are supported by the population which numbers twenty-five hundred.

PENNSYLVANIA RAILROAD HOTEL.—R. M. Baldrige. Opposite station. Accommodations for fifty guests. Rates, \$2 per day, \$10 per week.

THE HEILBROUN.—Mrs. Long. Half mile from station. Accommodations for fifty guests. Rates, \$2 to \$2.50 per day, \$6 to \$15 per week.

BOARDING-HOUSE.—Mrs. Thos. Hoopes. One minute's walk from station. Accommodations for ten guests. Rates, \$6 to \$10 per week.

BOARDING-HOUSE.—Mrs. Powell. One minute's walk from station.

BOARDING-HOUSE.—Mrs. Ella Peace. Two minutes' walk from station.

BOARDING-HOUSE.—Mrs. Mary Kilman. One minute's walk from station.

BOARDING-HOUSE.—Mrs. S. Thomas. One mile from station.

### *WEST CHESTER BRANCH.*

Distance, Zermatt 25.6, Kirkland 27.9, Greene Hill 27.9, Fern Hill 29.3 miles.

13 trains each way on week-days, 6 on Sundays.

Running time, 53 minutes to 1 hour and 8 minutes. Fare, 80 cents; 2-day excursion rate, \$1.25. Family tickets range from \$25 to \$29; quarterly range from \$28 to \$30.80; monthly range from \$10 to \$11.40; school range from \$7.60 to \$8.

The West Chester Branch, leaving the Main Line at Frazer, trends to the south, and, at a distance of six and eight-tenths miles, reaches West Chester. The stations on the branch are ZERMATT, KIRKLAND, GREENE HILL, and FERN HILL, at each one of which all the trains stop, thus giving them the same facilities as enjoyed by West Chester via Frazer. This region, outside the valley proper, is the choicest section of Chester County. The hills are elevated and crowned with handsome trees, while the green valleys are as fertile as a garden. Picturesque views of pastoral beauty spread out in every direction, and from some of the hill-tops the prospect is superb. Country homes are the principal holdings at present, but the desirability of the region in every particular is attracting the attention of home-seekers from the city, and few more seasons will pass before it will present a chain of settlements along the entire branch line.

### *PHOENIXVILLE BRANCH.*

Distance, Nutt Avenue 29, Harveyville 29.7, Pickering 31, Aldham 32.3, Devault 33.7, Sidley 35.1, Bacton 36.2, Swedesboro Road 37.3 miles. 5 trains each way on week-days.

Running time, 1 hour and 12 minutes to 1 hour and 50 minutes.

Fare, first class, ranging from 87 cents to \$1.10. Family tickets, ranging from \$29.20 to \$37.50; monthly tickets, ranging from \$11.40 to \$13.95; school tickets, ranging from \$7.60 to \$9.30.

The Phoenixville Branch, leaving the Main Line of the Schuylkill Division at Phoenixville, runs off in a southerly direction, and, at a

distance of eleven miles, reaches Frazer, on the Main Line of the Pennsylvania Railroad. There are seven or eight stations on the branch, the principal ones of which are DEVAULT, ALDHAM, and PICKERING. The character of the region warrants its becoming a choice and popular section. It is as yet very quiet, but offers every inducement for a recreative summer sojourn, with its water, woods, and pretty farms.



# PENNSYLVANIA RAILROAD.

---

## *SCHUYLKILL DIVISION.*

---

### PARK, PHILADELPHIA.

Distance, 4.6 miles. 7 trains each way on week-days; 6 on Sundays.  
Running time, 12 minutes. Fare, 15 cents; 2-day excursion rate, 25 cents. Family tickets, \$4.80; quarterly, \$10.90; monthly, \$4.05; school, \$2.70.

This point is one of the most convenient gateways to Fairmount Park, and is under the very shadow of George's Hill, from the summit of which a splendid view of the city and the Delaware River may be obtained. Excursionists find a haven on the thickly wooded and shaded ground in the vicinity.

### BALA, PHILADELPHIA.

Distance, 5.7 miles. 20 trains each way on week-days; 15 on Sundays.  
Running time, express 11 minutes, accommodation 15 minutes. Fare, 15 cents; 2-day excursion rate, 25 cents. Family tickets, \$5.90; quarterly, \$11.75; monthly, \$4.35; school, \$2.90.

On the western borders of the park, of which Philadelphia is so justly proud, with the county line running through it, is the beautiful suburb of Bala. The high ground, picturesque country, and other natural advantages have served to stimulate its rapid development, and place it in a most enviable position. The houses in and around the place are of the prettiest design and finish. Spacious grounds surround the larger residences, which are the equal of any in the suburban district. The accessibility to the city, either by train or driving, tends in a great measure to add to its popularity, which has taken decidedly upward strides of late years, and with every indication of gaining even wider attention.

The desirability and situation of Bala are so conspicuously evident that there are no less than five large public homes of various kinds erected within its lines, which fact speaks well for the future growth.

### CYNWYD, PHILADELPHIA.

Distance, 6.1 miles. 19 trains each way on week-days; 14 on Sundays.  
Running time, express 15 minutes, accommodation 17 minutes. Fare, 15 cents; 2-day excursion rate, 25 cents. Family tickets, \$6.40; quarterly, \$12.15; monthly, \$4.50; school, \$3.

The excellent location of this station, and the beautiful, undulating country surrounding it, render it a most attractive place of summer residence. Improvements of a substantial nature have been recently made here, and a place of some prominence in the list of valuable country properties is promised by these genuine attestations of its worth.

### WEST LAUREL HILL, PHILADELPHIA.

Distance, 7.1 miles. 17 trains each way on week-days; 13 on Sundays.  
Running time, 17 minutes. Fare, 15 cents; 2-day excursion rate, 25 cents. Family tickets, \$7.30; quarterly, \$12.95; monthly, \$4.80; school, \$3.20.

This place is entitled to rank with the most beautiful cities of the dead in the land. The cemetery, after which the place is named, is located on very high ground overlooking the Schuylkill River, and the view from almost any point is extensive and varied. The surrounding country enjoys like elevation, but has not as yet attracted the eyes of suburban settlers to any extent.

### MANAYUNK, PHILADELPHIA.

Distance, 7.9 miles. 21 trains each way on week-days; 15 on Sundays.  
Running time, express 15 minutes, accommodation 22 minutes. Fare, 15 cents; 2-day excursion rate, 25 cents. Family tickets, \$8.10; quarterly, \$13.75; monthly, \$5.10; school, \$3.40.

This thickly-settled manufacturing place is built on abrupt hills which rise to a great height from the river's bank. Several great mills are located here, and the population is mainly dependent on them for support. Manayunk is famous throughout the country for its industries of various kinds; in fact, its productions add materially to the manufacturing reputation of Philadelphia.

## SHAWMONT, PA.

Distance, 9.6 miles. 17 trains each way on week-days; 14 on Sundays.  
 Running time, 26 minutes. Fare, 20 cents; 2-day excursion rate, 35 cents. Family tickets, \$9.80; quarterly, \$15; monthly, \$5.55; school, \$3.70.

Overlooking the sinuous banks of the Schuylkill, on a high hill, is situated pretty little Shawmont, with its scattering of houses devoted to private family use. Boating, bathing, and fishing are the chief summer attractions. The place affords many available sites for building purposes, and the facilities are of the best kind.

## SPRING MILL, PA.

Distance, 12.4 miles. 17 trains each way on week-days; 14 on Sundays.  
 Running time, 32 minutes. Fare, 35 cents; 2-day excursion rate, 45 cents. Family tickets, \$12.60; quarterly, \$17.40; monthly, \$6.45; school, \$4.30.

This station is well equipped with all conveniences for communication with the outer world. From the site of the old mansion at Spring Mill and other highly-elevated points an extensive view is revealed of the country for miles around. In the distance, dimly outlined mountains, and beneath, the winding waters of the river, from which the valley derives its name, reward the gaze.

OLD STONE MANSION—Miss L. R. Righter. Five minutes' walk from station. Accommodations for twelve gentlemen. Rates, \$12 to \$15 per week. Open May to November.

FARM HOUSE.—Miss A. E. Jones. Four minutes' walk from station. Accommodations for twenty-five. Open all year.

## CONSHOHOCKEN, PA.

Distance, 13.6 miles. 21 trains each way on week-days; 15 on Sundays.  
 Running time, express 24 minutes, accommodation 36 minutes. Fare, 35 cents; 2-day excursion rate, 50 cents. Family tickets, \$13.80; quarterly, \$18.25; monthly, \$6.75; school, \$4.50.

Like Manayunk, chiefly to manufacturing industries, it owes its growth. In addition, however, it offers especial attractions for summer sojourners. In the residential portion of the town are seen many handsome private homes, generously ensconced in well-kept grounds, and from which point is unfolded a charming prospect of fine scenery.

Its telegraphic, telephonic, mail service, churches, schools, and stores—all combine to form a miniature city, from which, in a few minutes' walk, a beautiful open country is approached.

HERMITAGE MANSION.—Mrs. Jonas Eberhardt. One mile from station. Accommodations for seventy-five guests. Open May to November. Rates, \$7 to \$10 per week.

MONTGOMERY HOUSE.—Mr. V. S. Bloomhall. One square from station. Accommodations for fifteen guests. Open all year. Rates, \$9 per week, \$1.50 per day.

BOARDING-HOUSE.—Mr. William Hallowell. Half a mile from station. Accommodations for fifteen guests. Open all year.

OLD FULTON MANSION.—Mrs. F. Collins. Three squares from station. Accommodations for forty guests. Rates, \$7 to \$10 per week.

## NORRISTOWN, PA.

Distance, 17.4 miles. 21 trains each way on week-days; 15 on Sundays.

Running time, express 30 minutes, accommodation 44 minutes. Fare, 50 cents; 2-day excursion rate, 65 cents. Family tickets, \$17.60; quarterly, \$21.45; monthly, \$7.95; school, \$5.30.

Norristown, of Revolutionary fame, is an old and well-established town, dating back many years when it was amongst the foremost settlements in the Union. Advancing slowly but surely, it now asserts itself as being one of the most prosperous regions, and located as it is in a choice portion of the Schuylkill Valley, its twenty-two thousand inhabitants have every reason to be proud of their enterprise in pushing the big borough to its present high standing. Electric light and trolley lines are included in its many advantages, and an excellent service of fast and well-equipped trains connects it with Philadelphia.

It is the county-seat of Montgomery County.

HOTEL AND PRIVATE MANSION ATTACHED.—Mr. Oliver K. Beyer. Two miles from station. Accommodations for forty to fifty guests. Rate, \$6 per week. Open May to November.

BOARDING-HOUSE.—Mrs. D. Y. Reiff. Five minutes' walk from station. Accommodations for eight guests. Open all year. Rates, \$6 to \$8 per week.

HARTRANFT HOUSE.—Mr. Theo. Hallman. Two and one-half squares from station. Accommodations for seventy-five guests. Rates, \$5 to \$8 per week.

VERANDA HOTEL.—Mr. John G. Tyson. Two squares from station. Accommodations for thirty or forty guests. Open all year. Rates, \$5 to \$7 per week.

RAMBO HOUSE.—Mr. Warren B. Barnes. Two squares from station. Accommodations for fifty or sixty persons. Open all year. Rates, \$5 to \$8 per week.

MONTGOMERY HOUSE.—Mr. P. V. Hoy. One square from station. Accommodations for fifty persons. Open all year. Rates, \$9 to \$10 per week.

FARMERS' HOTEL.—Mr. S. H. Mensch. Three squares from station. Accommodations for one hundred guests. Open all year. Rates, \$5 to \$7 per week.

WINDSOR HOTEL.—Mr. Wm. A. Boucot. Opposite station. Accommodations for sixty-five guests. Rates, \$8 to \$10 per week.

EXCHANGE HOTEL.—Mr. Jno. S. Davis. Accommodations for forty guests. Rate, \$7 per week.

### BETZWOOD, PA.

Distance, 21.7 miles. 8 trains each way on week-days; 5 on Sundays.

Running time, express 40 minutes, accommodation 56 minutes. Fare, 63 cents; 2-day excursion rate, 84 cents. Family tickets, \$21.90; quarterly, \$24.70; monthly, \$9.15; school, \$6.10.

A thriving little place, increasing in size with each season. Many improvements have recently been made, and every facility for connection with the city is to be had by its rather few inhabitants.

Opposite Betzwood, on the other side of the river, is the

PORT KENNEDY HOTEL.—Mr. Daniel Loughlin. Three-quarters of a mile from station. Accommodations for ten guests. Open all the year. Rate, \$7 per week.

### PERKIOMEN, PA.

Distance, 24.7 miles. 8 trains each way on week-days; 5 on Sundays.

Running time, express 44 minutes, accommodation 1 hour. Fare, 74 cents; 2-day excursion rate, 99 cents. Family tickets, \$24.90; quarterly, \$27.10; monthly, \$10.05; school, \$6.70.

Perkiomen is at the point of junction of the Schuylkill River and Perkiomen Creek, and an ideal spot for camping-out and fishing parties. Several summer and permanent homes are attached to the place.

FARM HOUSE.—Thos. Griffen. Ten minutes from station. Accommodations for fifteen persons. Rates, \$6 to \$8 per week. Oaks Post-office.

FARM HOUSE.—Mrs. Milton Davis. One-half mile from station. Accommodations for eight guests. Rates, \$6 to \$8 per week. Oaks Post-office.

FARM HOUSE.—Mrs. Mary A. Stall. One mile from station. Accommodations for twelve guests. Rates, \$6 to \$8 per week. Oaks Post-office.

FARM HOUSE.—Mr. Stroup. One and one-half miles from station. Accommodations for twenty guests. Rates, \$6 to \$8 per week. Oaks Post-office.

## PORT PROVIDENCE, PA.

Distance, 26.5 miles. 7 trains each way on week-days; 5 on Sundays.

Running time, 1 hour 5 minutes. Fare, 80 cents; 2-day excursion rate, \$1.07. Family tickets, \$26.70; quarterly, \$28.75; monthly, \$10.65; school, \$7.10.

On the western side of the railroad, sheltered by the surrounding high ground, lies this little settlement, well adapted for summer rest and health.

INDIAN ROCK FARM.—Mr. Joseph Fitzwater. Three minutes from station. Accommodations for twelve adults. Open June to October. Rates, \$7 to \$10 per week.

BOARDING-HOUSE.—Mr. James H. Brower. Three hundred yards from station. Accommodations for six guests. Open May to November. Rate, \$6 per week.

BOARDING-HOUSE.—Mr. J. H. Harley. Five minutes from station. Accommodations for ten guests.

## MONT CLARE, PA.

Mont Clare is on the other side of the river from its big neighbor,—Phoenixville,—and presents an attractive quarter, either for residences or pleasure-seekers. Fishing in Black Rock Dam, nearby, is claimed to be of a good character, and draws a lot of devotees of the rod during the biting season.

BLACK ROCK HOTEL.—Two miles from station. Accommodations for twenty guests.

BOARDING-HOUSE.—Mrs. J. C. Davis. One minute from station. Accommodations for five guests.

## PHENIXVILLE, PA.

Distance, 28 miles. 10 trains each way on week-days; 5 on Sundays. Running time, express 48 minutes, accommodation 1 hour 13 minutes. Fare, 81 cents; 2-day excursion rate, \$1.08. Family tickets, \$28.20; quarterly, \$29.55; monthly, \$10.95; school, \$7.40.

Phenixville, as is well known, is an industrial centre of considerable commercial importance. Its iron furnaces supply a great amount of material to the building trade, and its bridge-work goes out to the most remote sections of the country. Other manufacturing enterprises support its population, which now numbers eleven thousand, who, in turn, support ten churches, several banks and schools, daily papers, gas and water works, and all the facilities an enterprising little city can command.

The town shares, with the entire valley, a reputation for healthfulness and pleasant surroundings which attract many visitors.

WASHINGTON HOTEL.—Mr. Fred Wall. Six minutes' walk from station. Accommodations for twenty guests. Open all the year. Rates, \$6.50 to \$8.50 per week.

PHENIX HOTEL.—Mr. Jacob Wall. Eight minutes from station. Accommodations for fifteen guests. Open all the year. Rates, \$6.50 to \$8 per week.

DETTRA HOUSE.—Mr. Adam Raby. Ten minutes from station. Accommodations for fifteen guests. Open all the year. Rates, \$1 per day, \$5 to \$7 per week.

UNION HOTEL.—Mr. John Stroup. Five minutes from station. Accommodations for twenty-five guests. Open all year. Rates, \$1 per day, \$7 to \$10 per week.

PHENIX CLUB.—Mrs. G. W. Boone. Ten minutes' walk from station. Accommodations for thirty guests. Open all the year. Rates, \$2.50 per day, \$8, \$15, and \$20 per week.

MANSION.—Mrs. Elizabeth Wilkinson. Three minutes from Nutt's Avenue Station. Accommodations for eight guests. Open May to November. Rates, \$7 to \$9 per week.

GENERAL PIKE HOTEL.—Mr. Chas. Shaffer. One minute from Nutt's Avenue Station. Accommodations for twenty-five guests. Open all year. Rates, \$7 to \$9 per week.

BOARDING-HOUSE.—Mrs. Isaac Christman. One mile east from the station. Accommodates thirty guests.

# PENNSYLVANIA RAILROAD.

---

## *NEW YORK DIVISION.*

---

### FRANKFORD, PHILADELPHIA.

Distance, 9.6 miles. 23 trains each way on week-days; 13 on Sundays.

Running time, express 18 minutes, accommodation 25 minutes. Fare, 15 cents; 2-day excursion rate, 25 cents. Package tickets 8 for \$1; quarterly, \$15; monthly, \$5.55; school, \$3.70.

Frankford, with its numberless factories and mills, is very proud of the fact that it contributes largely to the national reputation of Philadelphia as a manufacturing centre. In fact, some of the products of this industrial outskirt have earned a world-wide fame. The population of thirty thousand, who rely principally upon manufactures for their maintenance, support eighteen churches, the best of schools, newspapers, and other conveniences of the city proper.

It is asserted that Thomas Jefferson and other members of the Continental Congress repaired to an old mansion belonging in those days to the Edwards family, and still standing here, to celebrate, in a social way, the momentous event of the signing of the Declaration of Independence. The French general La Fayette also honored the place with his presence on an occasion.

**JOLLY POST.**—E. F. Smith. Five squares from station. Accommodations for fifty guests. Rates, \$7 to \$12 per week.

**BOARDING-HOUSE.**—Mrs. R. Buckius. Five minutes from station. Accommodates twenty-five guests. Open all year. Rates, \$5 to \$6 per week.

**SEVEN STARS HOTEL.**—Mr. John Birkman. One mile from station. Accommodates thirty-five guests. Open all year. Rates, \$6 to \$8 per week.

**BOARDING-HOUSE.**—Misses Thorp. Five squares from station. Accommodates ten guests. Open all year. Rates, \$5 to \$8 per week.



## BRIDESBURG, PHILADELPHIA.

Distance, 10.4 miles. 18 trains each way on week-days; 10 on Sundays.

Running time, express 23 minutes, accommodation 28 minutes. Fare, 20 cents; 2-day excursion rate, 30 cents. Quarterly tickets, \$15.80; monthly, \$5.85; school, \$3.90.

Close to Frankford, Bridesburg, in a way, partakes of the same nature as its bigger neighbor. The United States Arsenal is stationed here, and the armament test and target practice are sources of both interest and instruction.

MYERS' HOTEL.—Mrs. R. Myers. One square from station. Accommodations for fifteen guests.

HAFER'S HOTEL.—Chas. Hafer. One square from station. Accommodations for fifteen guests.

## WISSINOMING, PHILADELPHIA.

Distance, 11.1 miles. 16 trains each way on week-days; 10 on Sundays.

Running time, express 26 minutes. Fare, 25 cents; 2-day excursion rate, 40 cents. Family tickets, \$11.10; quarterly, \$16.60; monthly, \$6.15; school, \$4.10.

This is the first station on the New York Division with rural surroundings. It is built on high ground, and its advantages in a delightful location have given a decided impetus to its being selected as a place of residence and summer outing. There is an old ladies' home, picturesquely enclosed in pretty grounds, close by the station.

## TACONY, PHILADELPHIA.

Distance, 12.1 miles. 20 trains each way on week-days; 11 on Sundays.

Running time, express 22 minutes, accommodation 33 minutes. Fare, 25 cents; 2-day excursion rate, 40 cents. Family tickets, \$12.20; quarterly, \$17.40; monthly, \$6.45; school, \$4.30.

Very much like Frankford, is Tacony, with its busy manufacturing establishments and its thrifty, industrious community of people. Snug little homes make up the social part of the section, which is as far advanced in the enjoyment of improved facilities as could be desired. A realization of the immense proportions of Philadelphia is most obvious when the twelve miles and more intervening between here and the great Broad Street Station, and yet a very populous region in view, are considered.

**HOTEL.**—Messrs. Merz Brothers. One square from station. Accommodates fifty guests. Open all year. Rates, \$8 to \$12 per week.

**BRIGHTON HOUSE.**—Mrs. M. Coyn. Five squares from station. Accommodates twenty guests. Open all the year. Rate, \$5 per week.

### HOLMESBURG JUNCTION, PHILADELPHIA.

Distance, 13.2 miles. 19 trains each way on week-days ; 11 on Sundays.

Running time, express 22 minutes, accommodation 36 minutes. Fare, 26 cents ; 2-day excursion rate, 44 cents. Family tickets, \$13.20 ; quarterly, \$18.25 ; monthly, \$6.75 ; school, \$4.50.

This station acts as a junction point of the Main Line with the spur running to Holmesburg, four-tenths of a mile, Bustleton four miles distant, and two other stations of minor importance. A very pretty country, with many summer attractions, lies beyond the station, and with easy access to the city at all times.

The House of Correction is nearby, and the new County Prison is in course of erection. This latter institution will relieve Moyamensing of its burden.

**FARM HOUSE.**—Mrs. A. G. Reese. One-half mile from station. Accommodations for twenty guests. Rates, \$6 to \$8 per week.

**STATE ROAD HOTEL.**—Mr. G. Birkman. One square from station. Accommodates thirty guests. Open all the year. Rates, \$6 to \$8 per week.

**BOARDING-HOUSE.**—Mrs. Alfred Hogeland. Three minutes' walk from station. Accommodates five guests. Open May to October. Rates, \$6 to \$8 per week.

**BOARDING-HOUSE.**—Mrs. S. Wilde. One-half mile from station. Accommodates four guests. Rate, \$7 per week.

**MANSION.**—Mrs. George Yeagle. One mile from station. Accommodates fifteen guests. Open May to October. Rates, \$6 to \$8 per week.

### HOLMESBURG, PHILADELPHIA.

Distance, 13.7 miles. 9 trains each way on week-days ; 3 on Sundays.

Running time, 23 to 30 minutes. Fare, 28 cents ; 2-day excursion rate, 46 cents. Family tickets, \$13.70 ; quarterly, \$18.65 ; monthly, \$6.90 ; school, \$4.60.

Off a few steps from the main division, with a resident population of over two thousand, and churches, a school and library, well-paved

streets, a suburb of no mean advantages, is Holmesburg, thoroughly suitable as a place of permanent abode or summer residence.

**GEN'L WAYNE HOTEL.**—Chris. Snyder. One-half mile from station. Accommodations for fifteen guests. Rates, \$6 to \$8 per week.

**GREEN TREE HOTEL.**—Mr. C. W. Stout. One-quarter mile from station. Accommodates fifteen guests. Rates, \$6 to \$8 per week. Open all year.

**WASHINGTON HOUSE.**—Mr. Robert Johnson. One-quarter mile from station. Accommodates twenty guests. Open all year. Rates, \$6 to \$8 per week.

### BUSTLETON, PHILADELPHIA.

Distance, 17.3 miles. 9 trains each way on week-days; 3 on Sundays.

Running time, express 33 minutes, accommodation 38 minutes. Fare, 38 cents; 2-day excursion rate, 64 cents. Family tickets, \$17.30; quarterly, \$21.50; monthly, \$7.95; school, \$5.30.

Reaching an elevation quite considerably above the lower end, Bustleton is the terminus of the spur from the junction. The town is built on high ground overlooking the Delaware and Pennypack, and contains fifteen hundred inhabitants. For plain, unadulterated country, that extending beyond into Huntingdon Valley is the equal of any near Philadelphia.

**BUSTLETON HOTEL.**—Accommodations for eight persons.

**EAGLE HOTEL.**—W. J. Fitzgerald. Two squares from station. Accommodations for ten persons.

### LIDDONFIELD, PHILADELPHIA.

Distance, 14.3 miles. 13 trains each way on week-days; 8 on Sundays.

Running time, 39 minutes. Fare, 29 cents; 2-day excursion rate, 49 cents. Family tickets, \$14.30; quarterly, \$19; monthly, \$7.05; school, \$4.70.

A mile above Holmesburg Junction, on the main tracks, stands Liddonfield. A new and handsome station has been erected near the site of the old one which was called Pennypack. A level, pretty country environs the place, affording excellent opportunities for summer homes. In the vicinity is some fertile farm land, cared for by the inmates of the House of Correction, as a means of profitably employing the time of their enforced retirement from public life.

## PIERSON'S, PHILADELPHIA.

Distance, 15 miles. 15 trains each way on week-days; 8 on Sundays.

Running time, express 33 minutes, accommodation 40 minutes. Fare, 32 cents; 2-day excursion rate, 53 cents. Family tickets, \$15; quarterly, \$19.45; monthly, \$7.20; school, \$4.80.

An exceedingly quiet spot, and as yet but little developed. The country round about is principally devoted to agricultural pursuits, and yields rich products as a reward to the efforts of the plow and harrow.

## TORRESDALE, PHILADELPHIA.

Distance, 15.8 miles. 19 trains each way on week-days; 8 on Sundays.

Running time, express 25 minutes, accommodation 40 minutes. Fare, 34 cents; 2-day excursion rate, 57 cents. Family tickets, \$15.80; quarterly, \$20.30; monthly, \$7.50; school, \$5.

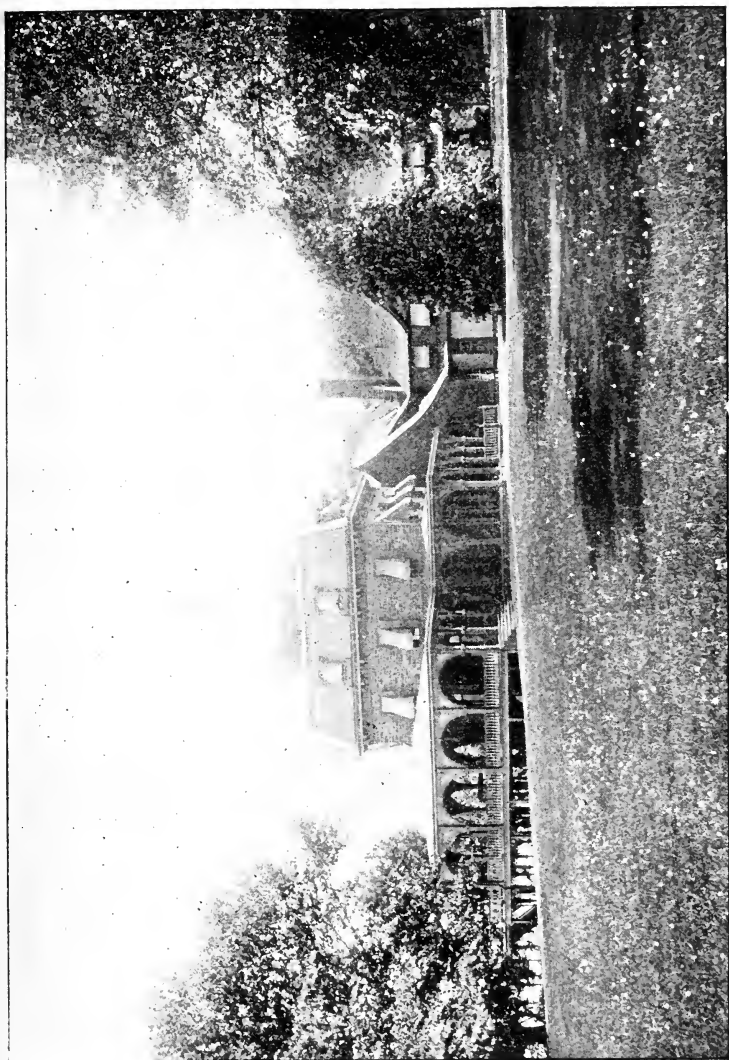
Torresdale is romantically and picturesquely situated between the railroad and the river, and bounded on the northern side by a rushing creek. On the surrounding eminences and along the river bank will be found to-day old mansions, prominent in the history of the past, and now occupied either by the descendants of the original owners or devoted to other usages. These places rival in beauty and fine location the English parks after which they were fashioned.

The Morelton Inn and Cottages, on the river front, are splendid establishments, and with new and progressive enterprise instilled in their management, bid fair to produce magnificent results in the summer qualifications of the place and its subsequent development. A commodious addition or annex is now being constructed and will be ready for occupancy by early summer. An orchestra and a casino for evening diversions are highly valued and appreciated adjuncts to this handsome suburban hotel.

The Academy of the Sacred Heart, or Eden Hall, as it is popularly called, is within a few minutes' walk of the station.

MORELTON INN AND COTTAGES.—One-quarter mile from station. Accommodations for three hundred guests.

RED LION INN.—Mr. L. O. T. Hall. One and one-quarter miles from station. Accommodates fifteen persons. Open all year. Rates, \$8 to \$10 per week.



MORELTON INN, TORRESDALE, PA.

## ANDALUSIA, PA.

Distance, 16.8 miles. 14 trains each way on week-days ; 8 on Sundays.  
Running time, 44 minutes. Fare, 37 cents ; 2-day excursion rate, 62 cents. Family tickets, \$16.50 ; quarterly, \$21.05 ; monthly, \$7.50 ; school, \$5.20.

Andalusia, though mainly populated by the residents of private summer homes, is a suitable place of retreat over the warm weather for transient guests. The section on the river bank, like other places in the locality, has all facilities for boating, bathing, and fishing.

BOARDING-HOUSE.—Mrs. R. J. Hudson. One-quarter mile from station. Accommodates six guests. Open May to October. Rates, \$7 to \$10 per week.

## CORNWELLS, PA.

Distance, 18.1 miles. 18 trains each way on week-days ; 9 on Sundays.  
Running time, express 34 minutes, accommodation 48 minutes. Fare, 41 cents ; 2-day excursion rate, 68 cents. Family tickets, \$18.10 ; quarterly, \$22.25 ; monthly, \$8.25 ; school, \$5.50.

A most unique station, built in the colonial style of architecture, adorns this point, which, with its desirable healthy location, occupies an enviable position in the list of Philadelphia's suburbs. The Holy Providence School, run under the auspices of the St. Elizabeth Convent, a short distance from the station, is a home for the shelter and education of colored children.

## EDDINGTON, PA.

Distance, 19.3 miles. 16 trains each way on week-days ; 9 on Sundays.  
Running time, 50 minutes. Fare 44 cents ; 2-day excursion rate, 74 cents. Family tickets, \$19.30 ; quarterly, \$23.10 ; monthly, \$8.55 ; school, \$5.70.

With rural scenery, excellent boating and fishing, and good water, Eddington has many qualifications entitling it to the consideration of the summer idler in quest of pleasure and change of air and surroundings. In the town proper there are over eight hundred people who have all necessary conveniences at hand.

DUNK'S FERRY HOTEL.—Mr. George Bentcliff. One mile from station. Accommodates twelve guests. Open all the year. Rates, \$6 to \$8 per week.

BOARDING-HOUSE.—Mrs. Parsons. One minute's walk from station. Accommodations for eight guests.

BOARDING-HOUSE.—Mr. Crawford. Five minutes' walk. Accommodations for five guests. Open all year. Rates, \$4.50 to \$6.00.

## CROYDON, PA.

Distance, 20.7 miles. 19 trains each way on week-days; 9 on Sundays.

Running time, 53 minutes. Fare, 48 cents; 2-day excursion rate, 80 cents. Family tickets, \$20.60; quarterly, \$24.30; monthly, \$9; school, \$6.

The broad, placid waters of the Neshaminy Creek flowing through this point, and little boat-houses dotting the shady banks, a resort of exceedingly advantageous appointments is offered. Croydon really presents many attractions of a high order for summer residence. Groves of trees surround the hotels, and these natural arbors running down to the cool, rippling waters materially enhance its desirability. A pretty rustic bridge spans the creek and affords driving communication with some fine roads in either direction. A fine picnic ground is nicely laid out on the shores of the Delaware, one mile away. The summer inns are of considerable size, and with every facility for promoting the comfort of their guests.

THE BRIDGEWATER.—Mr. W. Harrie Vandegrift. Three-quarters of a mile from station. Accommodations for one hundred and twenty-five guests. Rates, \$10 to \$24 per week. Opens June 15th.

NESHAMINY GROVE HOUSE.—Three minutes from station. Accommodates one hundred and twenty-five guests. Open May until October.

## BRISTOL, PA.

Distance, 23.4 miles. 25 trains each way on week-days; 13 on Sundays.

Running time, express 34 minutes, accommodation 57 minutes. Fare, 57 cents; 2-day excursion rate, 80 cents. Family tickets, \$23.40; quarterly, \$26.35; monthly, \$9.75; school, \$6.50.

Bristol is a most thriving town of eight thousand five hundred inhabitants, situated on the Delaware River opposite Burlington, with which it is connected by a steam ferry. Located on high ground,

within easy access to Philadelphia and other points, it possesses superior advantages in a marked degree, both as a manufacturing town and a permanent or summer abode. For its manufactures it has attained a reputation of no mean order. Besides its railroad and river transportation it is also the terminus of the Delaware Division of the Pennsylvania Canal, which gives it additional prestige as a commercial point. Every facility of a large city is at the disposal of its residents.

**CLOSSON HOUSE.**—Mrs. James Dugan. Two squares from station. Accommodates fifty guests. Open all the year. Rates, \$2 per day, \$10 to \$15 per week.

**COTTAGE HOTEL.**—Mrs. G. W. Silbert. Two squares from station. Accommodates twenty guests. Open all the year. Rates, \$1.50 per day, \$9 per week.

**WHEELEN MEMORIAL HOME.**—A home for working girls. Miss H. J. Wood. Eight squares from station. Accommodates forty guests. Open May to October. Rates, \$3 to \$4.50 per week.

## TULLYTOWN, PA.

Distance, 27.3 miles. 14 trains each way on week-days; 5 on Sundays.

Running time, express 48 minutes, accommodation 1 hour 5 minutes. Fare, 68 cents;

2-day excursion rate, \$1. Family tickets, \$27.30; quarterly, \$29.60;

monthly, \$10.95; school, \$7.30.

Nicely located in the country, four miles beyond Bristol station, and with rapid transit to Philadelphia, this place should command no little attention as a summer resting-place. Five hundred inhabitants enjoy two churches, a public school, and several stores. A rich agricultural district extends in all directions.

**MAPLE LAWN FARM.**—Mr. C. E. Hayes. Four miles from station. Accommodates forty guests. Open May to October. Rates, \$6 to \$8 per week.

**BADÉ'S FARM HOUSE.**—Mr. George BADE. Three and one-half miles from station. Accommodates thirty guests.

**RAILROAD HOUSE.**—Mr. Elwood P. White. Close by station. Accommodates twenty guests. Open May to October. Rate, \$6 per week.



## MORRISVILLE, PA.

Distance, 32.5 miles. 13 trains each way on week-days ; 5 on Sundays.

Running time, express 1 hour, accommodation 1 hour 21 minutes. Fare, 80 cents ;

6-day excursion rate, \$1.25. Family tickets, \$32.50 ; quarterly, \$33.60 ;  
monthly, \$12.45 ; school, \$8.30.

Morrisville is situated on the western bank of the Delaware opposite Trenton. The old historic associations attaching to this outskirts of Trenton add some little glamour to an otherwise quiet, unpretentious locality of fifteen hundred souls.

Penn Manor, once the home of William Penn, is not far away, and Robert Morris, the financier of Revolutionary days, lived here. This latter mansion was afterwards the home of General Moreau, who, having quarreled with Napoleon, sought peace in America.

Fine building sites in the neighborhood adapted for manufacturing industries invite the investment of capital.

HOAGLAND HOTEL.—Mr. S. K. Bothell. Three minutes' walk from station. Accommodates twelve guests. Open all year. Rates, \$5 to \$10 per week.

UNION HOTEL.—Mr John A. Hellings. Two minutes from station. Accommodates twenty guests. Open all the year. Rates, \$7 to \$10 per week.

ROBERT MORRIS HOTEL.—Mr. S. H. Kimball. Two minutes' walk from station. Accommodates twenty-five guests. Open all year. Rates, \$5 to \$10 per week.

## TRENTON, N. J.

Distance, 33.8 miles. 36 trains each way on week-days ; 21 on Sundays.

Running time, express 47 minutes, accommodation 1 hour 20 minutes. Fare, 80 cents ;

6-day excursion rate, \$1.25. Family tickets, \$33.80 ; quarterly, \$34.85 ;  
monthly, \$12.90 ; school, \$8.60.

Trenton, the capital of the State of New Jersey, having every advantage and improvement of the large cities with which it is justly classed, has many attractive features outside of its importance as a town of great commercial and political influence. Over sixty thousand inhabitants claim Trenton as a place of residence, and, with the progressive spirit of its citizens, enjoy equally the accommodations of the big cities on either end of the division on which it is located.

The rural country beyond the boundaries of the town is up to the average, and some of the suburbs display wealth and taste in their construction.

The hotels are commodious and excellent.

BARLOW'S HOTEL.—Mr. Wm. Barlow. Opposite station. Accommodates one hundred and fifty. Rate, \$2 per day.

HOTEL DE ARLINGTON.—Mr. A. Van Doren. One-half square. Accommodates fifty persons. Rate, \$2 per day.

HOTEL WINDSOR.—Mr. W. W. Dilts. Ten minutes' walk. Accommodates two hundred guests. Rates, \$2.50 to \$3.50 per day, \$12 to \$18 per week.

TRENTON HOUSE.—Mr. P. Katzenbach. One-half mile from station. Accommodates two hundred guests. Rates, \$2.50 to \$3.50 per day, \$12 to \$18 per week.

STATE STREET HOUSE.—Messrs. Paul & Ale. One-half mile from station. Accommodates seventy-five guests. Rates, \$2.50 per day, \$8 to \$13 per week.

AMERICAN HOUSE.—Mr. Charles Kropp. One-half mile from station. Accommodates one hundred guests. Rates, \$2.50 per day, or \$10 to \$20 per week.

WEST END HOTEL.—Mrs. W. Corlake. One and one-half miles.

## *GERMANTOWN & CHESTNUT HILL BRANCH.*

### WESTMORELAND, PHILADELPHIA.

Distance, 6.2 miles. 29 trains each way on week-days; 22 on Sundays. Running time, express 12 minutes, accommodation 15 minutes. Fare, 10 cents; 2-day excursion rate, 15 cents. Package tickets, 12 for \$1; quarterly, \$12.55; monthly, \$4.65; school, \$3.10.

After darting across the Schuylkill River Bridge, and thence running off the Main Line of the New York Division, the first station of a suburban nature on the Germantown & Chestnut Hill Branch is Westmoreland. It is a thickly-settled outskirts of the city proper with

the same conveniences, and yet far enough beyond the centre of the overcrowded metropolis to lay some claim to the fascinations of the country.

### QUEEN LANE, PHILADELPHIA.

Distance, 7.6 miles. 29 trains each way on week-days; 22 on Sundays.

Running time, express 15 minutes, accommodation 19 minutes. Fare, 15 cents; 2-day excursion rate, 25 cents. Package tickets, 8 for \$1; quarterly, \$14.15; monthly, \$5.25; school, \$3.50.

The old, historic settlement of Germantown begins here. The place now has few remaining signs of what it once was. The quaint, old-fashioned landmarks have given way to modern, pretentious homes. Of these there is a numberless quantity, each vieing with the other in style of architecture and beauty of surroundings. The Germantown Cricket Club holds forth here on the celebrated Manheim field, one of the finest pieces of turf in the country.

### GERMANTOWN (CHELTEN AVE.), PHILADELPHIA.

Distance, 8.2 miles. 29 trains each way on week-days; 22 on Sundays.

Running time, express 17 minutes, accommodation 22 minutes. Fare, 15 cents; 2-day excursion rate, 25 cents. Package tickets, 8 for \$1; quarterly, \$14.15; monthly, \$5.25; school, \$3.50.

This is the main station of Germantown, and nearest the most populous portion. The interesting history, unequaled location, handsome homes, both large and small, excellent roadways, and manifold advantages and conveniences of the place are too well known to need a detailed description. The merest casual mention of some of the many attractions will suffice.

Germantown is assuredly the most popular section on the borders of Philadelphia. Democratic and exclusive life is enjoyed in its respective ways, and, with the unsurpassed charms and accessibility of the place combined, a thoroughly reliable and desirable quarter is presented.

Appended will be found a few summer stopping-places.

THE LINDEN.—J. Howard Seal. Accommodations for sixty guests. Twelve minutes' walk from station. Rates, \$9 to \$15 per week.

BOARDING-HOUSE.—144 West Coulter Street. Mr. Charles Jones. Four squares from station. Accommodations for fifty guests. Open all year.

BOARDING-HOUSE.—Mrs. John T. Ross. Half a mile from station. Accommodations for twenty guests. Open all year.

THE GREYSTONE.—Mrs. Uler. Eight minutes from station. Accommodations for fifty guests.

### TULPOHOCKEN, PHILADELPHIA.

Distance, 8.6 miles. 29 trains each way on week-days; 22 on Sundays.

Running time, express 19 minutes, accommodation 23 minutes. Fare, 15 cents; 2-day excursion rate, 25 cents. Package tickets, 8 for \$1; quarterly, \$14.15; monthly, \$5.25; school \$3.50.

At Tulpohocken, with its odd Indian name, the country dons a garb of a highly picturesque and rustic mien. Though the enviroing landscape is highly cultivated, it is naturally punctuated here and there with pretty wooded bowers and mossy dells. Above, on the higher ground, are beautiful homes, extensive lawns, and wide avenues.

Partaking of the same advantages as the more central parts of Germantown, the immediate vicinity has the added charm of a more open country.

BOARDING-HOUSE.—Miss H. B. Glentworth. Three squares from station. Accommodations for twenty-five guests. Rates, \$6 to \$12 per week. Open all year.

### UPSAL, PHILADELPHIA.

Distance, 9.2 miles. 29 trains each way on week-days; 22 on Sundays.

Running time, express 21 minutes, accommodation 25 minutes. Fare, 18 cents; 2-day excursion rate, 30 cents. Package tickets, 7 for \$1; quarterly, \$14.15; monthly, \$5.25; school, \$3.50.

Few suburban points have so rapidly sprung into favor as Upsal, and, encouraged by this genuine appreciation, a still greater popularity is about to be bestowed. Improvements of various kinds have been made lately, and a plan similar to that now being pushed to completion at Overbrook is about to be introduced between here and Carpenter, half a mile beyond. Co-operative methods and conveniences will be participated in by a collection or group of houses independently fitted with all modern inventions.

## CARPENTER, PHILADELPHIA.

Distance, 9.8 miles. 29 trains each way on week-days; 22 on Sundays. Running time, express 23 minutes, accommodation 27 minutes. Fare, 20 cents; 2-day excursion rate, 30 cents. Package tickets, 7 for \$1; quarterly tickets, \$15.40; monthly, \$5.70; school, \$3.80.

Like all the points on this pet division of the railroad is Carpenter, sharing as it does the same stretch of country, and maintaining the general tone of the adjacent territory. It will divide honors with Upsal in the distinction of creating an innovation in the art of perfecting home-life, or, at any rate, decreasing the labors attending the running of individual establishments.

## ALLEN LANE, PHILADELPHIA.

Distance, 10.3 miles. 29 trains each way on week-days; 22 on Sundays. Running time, express 25 minutes, accommodation 29 minutes. Fare, 20 cents; 2-day excursion rate, 35 cents. Package tickets, 6 for \$1; quarterly tickets, \$15.80; monthly, \$5.85; school, \$3.90.

Allen Lane is deservedly a favorite home and summer residence place. With its admirable location in the midst of the cream of suburban property, and its conveniences and accessibility as factors, its advance has been sure and steady. A greater prominence is predicted and with every reason for a realization.

The Pennsylvania Institution for the Deaf and Dumb elected this point for the site of their new building, which is of mammoth proportions and grand design.

MT. AIRY HOUSE.—Miss A. Errickson. Ten minutes' walk from station. Accommodations for seventy guests. Rates, \$10, \$18, and \$20 per week.

BOARDING-HOUSE.—Mrs. H. F. Rodd. Ten minutes' walk from station. Accommodations for sixteen guests. Open all the year. Rates, \$8 to \$10 per week.

MANSSION.—Mrs. Lydia M. Collins. Ten minutes' walk from station. Accommodations for four guests. Rates, \$7 to \$10 per week. Open all the year.

## WISSAHICKON HEIGHTS, PHILADELPHIA.

Distance, 11 miles. 27 trains each way on week-days; 20 on Sundays.  
Running time, express 28 minutes, accommodation 32 minutes. Fare, 25 cents; 2-day excursion rate, 40 cents. Package tickets, 5 for \$1; quarterly tickets, \$16.20; monthly, \$6; school, \$4.

The romantic creek, whose Indian name is here perpetuated, and from which this spot takes its name, is but one of the many attractive features. Beautiful scenic country surrounds the locality, through which a bridle path forces its way, famous for its picturesque winding trail. St. Martins in the Field, a church of quaint and exquisite fashioning, is close by; and the Horse Show grounds, where the great annual exhibit is held, are within a few steps of the station.

The Wissahickon Inn, with its delightful situation, takes a conspicuous part in popularizing the pretty place. Every convenience and luxury is provided its guests. Summer diversions of one kind or another are daily programmed at this favorite summer hotel, and appreciated by many from near and far.

WISSAHICKON INN.—Peter S. Attick. Five minutes' walk from station. Accommodations for three hundred guests. Open all the year.

CHESTNUT HILL HOTEL.—John Landis. Ten minutes' walk from station. Accommodations for twenty-five guests.

## HIGHLAND, PHILADELPHIA.

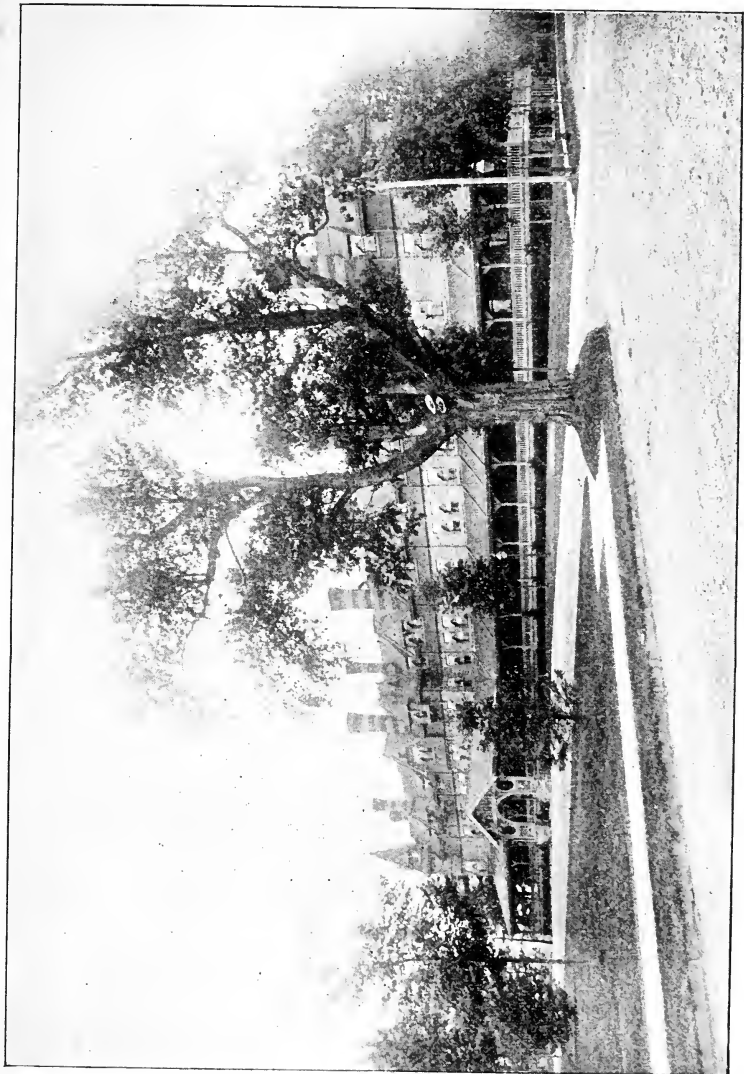
Distance, 11.6 miles. 27 trains each way on week-days; 20 on Sundays.  
Running time, express 30 minutes, accommodation 33 minutes. Fare, 25 cents; 2-day excursion rate, 40 cents. Package tickets, 5 for \$1; quarterly tickets, \$17.05; monthly, \$6.30; school, \$4.20.

Highland is the lower station of Chestnut Hill, and adds considerably to the good name of the latter place. Its houses are artistic in finish, and its roads the equal of any. It is a quiet, refined neighborhood.

## CHESTNUT HILL, PHILADELPHIA.

Distance, 12.0 miles. 27 trains each way on week-days; 20 on Sundays.  
Running time, express 32 minutes, accommodation 35 minutes. Fare, 25 cents; 2-day excursion rate, 40 cents. Package tickets, 5 for \$1; quarterly tickets, \$17.05; monthly, \$6.30; school, \$4.20.

This is the terminus of the Germantown & Chestnut Hill Branch, and at the same time the culmination of this elevated section. From



WISSAHICKON INN, WISSAHICKON HEIGHTS, PHILADELPHIA.

the commanding ground at Chestnut Hill a rare panoramic treat is given in the magnificent "White Marsh Valley,"—a dale of considerable size and effective coloring.

Within half an hour's ride of the busy, feverish city is this fine suburb of four thousand people, enjoying wide avenues, great trees, and spacious houses, some modeled after the old type, and contrasting markedly with those of modern architecture, all combining to place Chestnut Hill in exceptionally favorable esteem. As a summer retreat or permanent home it stands unrivaled.

THE ELDON.—Mr. George Simpson. Ten minutes' walk. Accommodations for one hundred and twenty-five guests. Open all the year. Rates, \$12 to \$25 per week.

MAPLE LAWN.—Mrs. M. E. Locke. Three minutes from station. Accommodations for forty guests. Open May to November. Rates, \$20 to \$30 per week.

### *CRESHEIM BRANCH.*

Verging from the Germantown & Chestnut Hill Branch at Allen Lane, the road enters the Cresheim Valley, and penetrates a section of country rich in historical interest, and one which nature has done much towards making a delightful place of abode. The face of the ground is of a rolling character, affording a pleasant diversity to the landscape which is dotted here and there by handsome residences. Stretches of green meadows are relieved by well-tilled fields and wooded ridges; the deep-green foliage of the trees contrasting with the lighter tints of the soil and forming pictures that charm the eye and refresh the senses. The natural beauties and attractions, combined with its healthfulness and entire freedom from malarious influences, are bound to attract numbers to this region, so that within a short time it will rival in popularity many of the suburban towns already established and held in high esteem.

Six miles from Allen Lane this spur ends abruptly at the tracks of the Trenton Cut-off.



## FORT HILL.

This village retains the name given by Washington to the fortification, —traces of which still remain,—erected here during the Revolutionary War, and is the site of Howe's threatened attack, on December 6th, 1777, while the American army was retreating towards Valley Forge. A tablet commemorating the event has been erected by the Pennsylvania Society of the Sons of the Revolution.

FORT-SIDE INN.—Mr. S. T. Godfrey. One-quarter mile from station. Accommodates forty guests. Open all the year. Rate, \$16 per week.

FORT WASHINGTON HOTEL.—Mr. W. S. Harris. One mile from station. Accommodates fifty guests. Open all the year. Rates, \$7 to \$10 per week.

CLIFTON HOUSE.—Three-quarters of a mile from station. Accommodates sixty guests. Open all the year. Rates, \$7 to \$12 per week.

# PHILADELPHIA, WILMINGTON & BALTIMORE RAILROAD.

## MARYLAND DIVISION.

### GRAY'S FERRY, PHILADELPHIA.

Distance, 3.1 miles. 17 trains each way on week-days; 11 on Sundays.  
Running time, 9 minutes. Fare, 10 cents; 2-day excursion rate, 15 cents. Package  
tickets (in strips of 14), \$1.

Apart from the manufacturing interests of Gray's Ferry there is little of an interesting nature. Countless rows of neat two-story houses are erected on the west bank of the river, and in their numbers attest the thrift of Philadelphia's citizens.

### FIFTY-EIGHTH STREET, PHILADELPHIA.

Distance, 3.9 miles. 17 trains each way on week-days; 11 on Sundays.  
Running time, 11 minutes. Fare, 12 cents; 2-day excursion rate, 20 cents. Family  
tickets, \$4.50; quarterly, \$10.55; monthly, \$3.90; school, \$2.60.

Bartram's Gardens, universally celebrated for their botanical wonders, are located within a short distance of the station, and in their beauty and historical associations present a sight well worth seeing. The country here is open and undeveloped to any great extent as yet, but offers in its naturalness eligible and attractive ground for either permanent or summer residence.

### MT. MORIAH, PHILADELPHIA.

Distance, 4.4 miles. 17 trains each way on week-days; 11 on Sundays.  
Running time, 12 minutes. Fare, 13 cents; 2-day excursion rate, 20 cents. Family  
tickets, \$4.90; quarterly, \$10.95; monthly, \$4.05; school, \$2.70.

This is the station for Mount Moriah Cemetery which, in its sad quietness, strangely contrasts with the busy car shops of a noted concern situated at this point. This latter establishment enlivens an otherwise unpretentious little settlement.

## BONNAFFON, PHILADELPHIA.

Distance, 4.9 miles. 17 trains each way on week-days; 11 on Sundays.

Running time, 14 minutes. Fare, 15 cents; 2-day excursion rate, 25 cents. Family tickets, \$5.40; quarterly, \$11.35; monthly, \$4.20; school, \$2.80.

With the stations on either side, Bonnaffon forms a picturesque gap in the thickly-settled quarter extending down this division of the road. A couple of churches and a school are among the advantages to be enjoyed at this healthful rural retreat, which is high in altitude and free from malaria.

## PASCHALL, PHILADELPHIA.

Distance, 5.4 miles. 17 trains each way on week-days; 11 on Sundays.

Running time, 16 minutes. Fare, 17 cents; 2-day excursion rate, 25 cents. Family tickets, \$6; quarterly, \$11.75; monthly, \$4.35; school, \$2.90.

Paschall, or Paschallville, as the village proper is named, is quite a built-up section. Hundreds of snug homes and an occasional large residence are to be found in and around the place. St. Vincent's Home and Maternity Hospital, the largest institution of its kind in the State, is nearby and provides shelter for many unfortunates.

**CLEAR VIEW MANSION.**—Miss Thomas. Three minutes' walk from station. Accommodations for eighty guests. Open all year. Rates, \$7 to \$15 per week.

**BLUE BELL.**—Mr. A. J. Russell. Three squares from station. Accommodations for forty persons. Open all the year. Rates, \$5 to \$7 per week.

## DARBY, PA.

Distance, 6.1 miles. 17 trains each way on week-days; 11 on Sundays.

Running time, 18 minutes. Fare, 18 cents; 2-day excursion rate, 25 cents. Family tickets, \$6.60; quarterly, \$12.20; monthly, \$4.50; school, \$3.

Darby proper, a little way from the station, is quaint and old-fashioned, and proud of its comparative antiquity, Swedes having settled the place prior to William Penn's arrival. The old landmarks have gradually disappeared and given way to modern residences, which present a most comfortable appearance. Darby Creek, flowing down to the Delaware, affords good boating and fishing. There are several good

country stores and churches in the town. Population numbers now about eighteen hundred. The inn, just across the tracks at this point, has recently been remodeled and enlarged.

**THATCHER'S INN AND FRUIT FARM.**—Mr. Henry Thatcher. Two minutes from station. Accommodations for two hundred persons. Rates, \$8 to \$15 per week. Open all year.

## SHARON HILL, PA.

Distance, 7.2 miles. 18 trains each way on week-days; 11 on Sundays. Running time, express 16 minutes, accommodation 20 minutes. Fare, 22 cents; 2-day excursion rate, 30 cents. Family tickets, \$7.70; quarterly, \$12.95; monthly, \$4.80; school, \$3.20.

Sharon Hill, to those who pass the summer in country homes and who permanently reside beyond the city's limits, has always stood in high favor.

The desirability of the place increases yearly. Handsome villas, rural scenery, and good water form appreciable recommendations of its worth. The Delaware River is but three miles distant, and the drives are kept in excellent condition.

**THE CEDARS.**—Mrs. Kate Deminger. Ten minutes' walk from station. Accommodations for thirty persons. Open all year. Rates, \$6 to \$10 per week.

**BOARDING-HOUSE.**—Mrs. E. P. Feltwell. One-quarter of a mile from station. Accommodations for eighteen persons. Open all year. Rates, \$6 to \$10 per week.

## FOLCROFT, PA.

Distance, 7.8 miles. 13 trains each way on week-days; 11 on Sundays. Running time, 22 minutes. Fare, 23 cents; 2-day excursion rate, 30 cents. Family tickets, \$8.30; quarterly, \$13.80; monthly, \$5.10; school, \$3.40.

Folcroft is as yet a comparatively new station, and on this very account is popular with a great many people. Its rapid growth and admirable situation promise to work wonders for it as a place of abode for those seeking country air, pure water, and freedom from the restraints of city life.

## GLENOLDEN, PA.

Distance, 8.4 miles. 18 trains each way on week-days; 12 on Sundays.  
 Running time, express 15 minutes, accommodation 23 minutes. Fare, 25 cents; 2-day excursion rate, 35 cents. Family tickets, \$8.90; quarterly, \$14.15; monthly, \$5.24; school, \$3.50.

Glenolden, as its name almost implies, is rather a picturesque suburb, and seems to be gaining favor in a somewhat lesser though substantial degree as its neighbors on the south. The village has perhaps three hundred people in it, and supports a couple of schools, a church, and several stores.

## NORWOOD, PA.

Distance, 9.1 miles. 19 trains each way on week-days; 12 on Sundays.  
 Running time, express 15 minutes, accommodation 25 minutes. Fare, 27 cents; 2-day excursion rate, 35 cents. Family tickets, \$9.60; quarterly, \$14.60; monthly, \$5.40; school, \$3.60.

Norwood and Moore on the south side are now two of the most popular points on this division of the Philadelphia, Wilmington & Baltimore Railroad. They are immediately contiguous and rival each other in their enterprise and attractiveness. Norwood offers special inducements to those in search of healthful country homes. Owners of property have rapidly prosecuted the work of grading, opening avenues, marking out lots and building thereon cozy cottages and houses of larger size, and now a most desirable and varied selection is offered.

## MOORE, PA.

Distance, 9.5 miles. 20 trains each way on week-days; 13 on Sundays.  
 Running time, express 17 minutes, accommodation 27 minutes. Fare, 29 cents; 2-day excursion rate, 40 cents. Family tickets, \$10; quarterly, \$15; monthly, \$5.55; school, \$3.70.

Considerable attention has been centred on Moore, with the result that it has been brought conspicuously forward, and in a remarkably short space of time has become a most populous and prosperous district. It is now thickly settled and enterprising, and with all the conveniences that could be desired bids fair to outstrip many older communities. It is well laid out on a regulation city plan, and its streets are lined with neat cottages, either owned by their occupants or rented at moderate figures. Darby Creek, which parallels this suburban stretch of country, adds to the summer features.

## RIDLEY PARK, PA.

Distance, 10.4 miles. 21 trains each way on week-days; 13 on Sundays.  
 Running time, express 19 minutes, accommodation 29 minutes. Fare, 31 cents; 2-day excursion rate, 45 cents. Family tickets, \$10.90; quarterly, \$15.80; monthly, \$5.85; school, \$3.90.

The large number of elegant dwellings, of a high order of design and finish, and a profusion of adornment in the surrounding gardens and lawns, eloquently attest the taste of its people, and greatly accounts for the wide popularity which Ridley Park enjoys. Possessing as it does every requirement in the shape of beautiful country, rapid and frequent train service, and the best of other facilities obtainable, this handsome suburb stands in a highly enviable and well-established position. It is a charming place, and well qualified to claim the attention of either temporary or permanent sojourners.

RIDLEY PARK HOTEL.—Mr. S. H. Lewis. Three minutes from station. Accommodations for one hundred and twenty-five guests. Rates, \$10 to \$15 per week.

COLEMAN HOUSE.—Mrs. A. C. Wise. Two minutes from station. Accommodations for twenty-five guests.

CHESTNUT GROVE LODGE.—M. F. Hazleton. Four minutes from station. Accommodations for twenty-five guests. Rates, \$7 to \$12 per week.

GRAVES' MANSION.—Mrs. Graves. Three minutes from station. Accommodations for fifteen guests. Rates, \$10 to \$12 per week.

THE EDELWEISS.—Miss A. M. Garrett. Five minutes from station. Accommodations for twenty-five guests. Rates, \$8 to \$10 per week.

ROSE COTTAGE.—Mrs. E. Koernke. Three squares from station. Accommodations for ten guests. Rates, \$6 to \$8 per week.

## CRUM LYNNE, PA.

Distance, 11.2 miles. 18 trains each way on week-days; 11 on Sundays.  
 Running time, express 24 minutes, accommodation 30 minutes. Fare, 34 cents; 2-day excursion rate, 45 cents. Family tickets, \$11.70; quarterly, \$16.20; monthly, \$6; school, \$4.

Crum Lynne is nicely situated in a picturesque part of the country, and has many natural and cultivated advantages which maintain for it



RIDLEY PARK HOTEL, RIDLEY PARK, PA.

a high place in the large selection of summer stopping-places. The little village of Leiperville, three-quarters of a mile away, helps to populate the locality.

WORRALL HOUSE.—Mr. M. W. Lukens. Accommodates fifteen guests. Open June 1st to September 30th. Rates, \$6 and \$7 per week.

FARM HOUSE.—Mrs. W. P. Lukens. One mile from station. Accommodates thirty-five guests. Rate, \$7 per week. Open all year.

FAIRVIEW INN.—W. D. Armstrong. Six minutes' walk from station. Accommodates one hundred and fifty persons. Rates, \$10 per week and upwards. Open May 15th to October.

### EDDYSTONE, PA.

Distance, 12.3 miles. 17 trains each way on week-days; 11 on Sundays. Running time, 32 minutes. Fare, 37 cents; 2-day excursion rate, 50 cents. Family tickets, \$12.80; quarterly, \$17.40; monthly, \$6.45; school, \$4.30.

While Eddystone's chief purpose is in being the site of the largest "print" works in the country, there are numerous excellent spots for the erection of suburban residences. A very pretty grove of twenty acres has been laid out nearby and artistically arranged as a park.

### CHESTER, PA.

Distance, 13.5 miles. 28 trains each way on week-days; 18 on Sundays. Running time, express 22 minutes, accommodation 37 minutes. Fare, 40 cents; 2-day excursion rate, 55 cents. Family tickets, \$14; quarterly, \$18.25; monthly, \$6.75; school, \$4.50.

Chester, with its world-wide famous ship-yards and other important industries and manufactories, is to be classified as a point of no mean commercial consequence. It is the seat of a celebrated military school, and, in short, a bustling little city of twenty-eight thousand people, who are proud of the fact that their town is the oldest in the State of Pennsylvania.

HOTEL CAMBRIDGE.—Mr. Henry Fisher. One square from station. Capacity, one hundred. Rates, \$2.50 to \$3.50 per day.

HOTEL COLONNADE.—Mr. T. S. Williamson. Three squares from station. Accommodates seventy persons. Rate, \$2 per day.

WASHINGTON HOUSE.—Henry Abbott. Accommodations for seventy-five persons. Square from station. Rates, \$2 per day, \$7 per week.



**AMERICAN HOUSE.**—Mr. Samuel Powell. Opposite station. Accommodations for twenty persons. Rate, \$2 per day.

**BEALE HOUSE**—Mr. W. H. Williams. Near station. Accommodations for forty persons. Rates, \$1.50 to \$2 per day.

**METROPOLITAN HOTEL.**—Mr. Thos. Hargraves. Three squares from station. Accommodations for sixty persons. Ten dollars per week.

**CITY HOTEL.**—Mr. Thos. Carr. Three squares. Capacity, sixty. Rate, \$7 per week.

**EDGMONT HOTEL.** Mr. John Evans. Six squares from station. Accommodations for fifty. Rate, \$7 per week.

**LAFAYETTE HOTEL.**—Mr. Wm. May. Three squares from station. Accommodations for thirty persons. Rate, \$12 per week.

## LAMOKIN, PA.

Distance, 14.4 miles. 19 trains each way on week-days; 11 on Sundays. Running time, express 27 minutes, accommodation 38 minutes. Fare, 45 cents; 2-day excursion rate, 60 cents. Family tickets, \$14.90; quarterly, \$19.05; monthly, \$7.05; school, \$4.70.

Lamokin acts as a terminus for trains that run for the especial convenience of local travel between Chester and Philadelphia. It is the junction point of the Maryland and Chester Creek Branch of the Central Division of the Philadelphia, Wilmington & Baltimore Railroad, and is within the corporate limits of the former city.

## THURLOW, PA.

Distance, 15.5 miles. 14 trains each way on week-days; 11 on Sundays. Running time, express 29 minutes, accommodation 40 minutes. Fare, 45 cents; 2-day excursion rate, 65 cents. Family tickets, \$16; quarterly, \$19.85; monthly, \$7.35; school, \$4.90.

In the borough of South Chester is Thurlow, a busy little place, depending mostly on its manufacturing as a means of attracting the notice of the outside world.

**PARK HOTEL.**—Mr. Jesse Rawcliffe. Two squares from station. Capacity, fifty. Rates, \$1.50 and \$2.00 per day.

## TRAINER, PA.

Distance, 16.3 miles. 11 trains each way on week-days; 8 on Sundays.  
Running time, 42 minutes. Fare, 47 cents; 2-day excursion rate, 65 cents. Family tickets, \$16.80; quarterly, \$20.65; monthly, \$7.65; school, \$5.10.

This is a quiet little settlement, with scarcely anything of a nature calculated to disturb the monotony of its existence, save some little manufacturing, which supports a good part of the population. Frame cottages seem to be the fashion of the place, and may be had at extremely moderate rents.

## LINWOOD, PA.

Distance, 17.1 miles. 14 trains each way on week-days; 11 on Sundays.  
Running time, express 33 minutes, accommodation 44 minutes. Fare, 50 cents; 2-day excursion rate, 70 cents. Family tickets, \$17.60; quarterly, \$21.05; monthly, \$7.80; school, \$5.20.

Linwood, with a population of a thousand, is in Marcus Hook borough, and offers every inducement as a place for a quiet summer outing, as well as for a retired all-the-year-round abode. The Delaware River is but little over half a mile off, beyond a slight rise in the ground, and in its proximity enhances the attractiveness of an even otherwise desirable and healthy region.

FARM HOUSE.—Mrs. Rachel White. Five minutes' walk. Accommodates thirty persons. Rate, \$8 per week.

BOARDING-HOUSE.—Miss S. M. Delleker. Seven minutes from station. Accommodates two families. Rate, \$8 per week during summer.

BOARDING-HOUSE.—Mrs. S. J. Giles. Two squares from station. Accommodations for five persons. Rate, \$5 per week. Open all year.

## CLAYMONT, DEL.

Distance, 18.9 miles. 14 trains each way on week-days; 10 on Sundays.  
Running time, express 33 minutes, accommodation 48 minutes. Fare, 55 cents; 2-day excursion rate, 75 cents. Family tickets, \$19.40; quarterly, \$22.70; monthly, \$8.40; school, \$5.60.

A verdant and breezy spot is Claymont, which lies just within the State line of Delaware. The ever-restless stream, glimmering in the distance, and the green hills above, combine to give it a most picturesque appearance.

## GRUBB'S LANDING, DEL.

Distance, 20.3 miles. 10 trains each way on week-days; 8 on Sundays.  
 Running time, express 47 minutes, accommodation 53 minutes. Fare, 59 cents; 2-day  
 excursion rate, 80 cents. Family tickets, \$20.80; quarterly,  
 \$23.90; monthly, \$8.85; school, \$5.90.

The mile-wide bosom of the Delaware spreads itself out in full view at this point, embellished on its western shore with tastefully erected club-houses. The hotel here is full of old associations, being used in bygone years as a stage-horse change and stopping-point for travelers on that superannuated medium of transportation.

THE PRACTICAL FARMER.—Mr. J. J. Kennedy. Opposite station. Accommodations for twenty guests.

## HOLLY OAK, DEL.

Distance, 21.4 miles. 12 trains each way on week-days; 9 on Sundays.  
 Running time, express 49 minutes, accommodation 54 minutes. Fare, 62 cents; 2-day  
 excursion rate, 85 cents. Family tickets, \$21.90; quarterly,  
 \$24.30; monthly, \$9.15; school, \$6.

Like the preceding station, the most interesting feature of this place is the number of boat-houses on the banks of the river. The tracks of the railroad closely parallel the great waterway for quite a distance along this section, and being almost on a level with the surface, with nothing to obstruct the range of sight, a most effective view is presented as the train whirls along, passing in its rapid flight contrastingly slow-moving vessels bound, perchance, on a ten thousand mile journey across the seas.

## BELLEVUE, DEL.

Distance, 22.2 miles. 11 trains each way on week-days; 8 on Sundays.  
 Running time, about 59 minutes. Fare, 65 cents; 2-day excursion rate, 90 cents. Family  
 tickets, \$22.70; quarterly, \$24.30; monthly, \$9.45; school, \$6.

The most striking thing at Bellevue is the omnipresent quietness which itself is often sought in connection with an available region for locating during a part of the year. It is here with all its attending restfulness, and within easy access to Wilmington and Philadelphia.

There are manifestly good reasons for predicting a less quiet but brighter future for this retired suburb of Delaware's principal city.

## GORDON HEIGHTS, DEL.

Distance, 23.4 miles. 7 trains each way on week-days; 6 on Sundays.

Running time, express 37 minutes, accommodation 1 hour. Fare, 68 cents; 2-day excursion rate, 95 cents. Family tickets, \$23.90; quarterly, \$24.30; monthly, \$9.75; school, \$6.

To those who would live by the water's edge, Gordon Heights, or Riverside as it was formerly named, offers many inducements. It gives promise of becoming quite a summer-excursion place of amusement.

## EDGE MOOR, DEL.

Distance, 24 miles. 13 trains each way on week-days; 10 on Sundays.

Running time, express 38 minutes, accommodation 1 hour and 2 minutes. Fare, 70 cents; 2-day excursion rate, \$1. Family tickets, \$24.50; quarterly, \$24.30; monthly, \$9.90; school, \$6.

A number of Wilmingtonians have adopted Edge Moor as their home, and this fact, coupled with the more important and prosaic factor of its being the home of an immense iron manufacturing concern, bespeaks a lasting name for what is a very desirable neighborhood.

## WILMINGTON, DEL.

Distance, 26.8 miles. 35 trains each way on week-days; 22 on Sundays.

Running time, express 40 minutes, accommodation 1 hour 8 minutes. Fare, 75 cents; 2-day excursion rate, \$1.10. Family tickets, \$27.30; quarterly, \$24.30; monthly, \$10; school, \$6.

Wilmington, with its seventy odd thousand inhabitants, is indisputably a most flourishing and active city. From an industrial point of view, it is entitled to rank with the foremost commercial centres in the country. It is situated between the Christiana and Brandywine Creeks, with the Delaware River bordering its eastern outskirts. The principal avenue for business is of the same name as Philadelphia's-Market Street, which thoroughfare extends through the town for two miles.

The shops of a noted company, famous for the luxurious appointments of its cars, great shipbuilding, wheel-making, car-building, leather-working, morocco-making, powder works, and flour-milling establishments, combine in their aggregate or individual importance to carry the name and fame of Wilmington to other lands than ours.

The residential portion in the upper part of the city vies in its construction with that of any large metropolis, and the facilities and advantages enjoyed by the citizens and visitors are of the very latest improvement which man has devised.

The hotels are numerous and good.

GRAND UNION.—Henry Blouth. Opposite station. Accommodations for fifty guests. Rate, \$2 per day.

MERRITT HOUSE.—T. B. Merritt. Opposite station. Accommodations for one hundred guests. Rate, \$2 per day.

NEW CLAYTON HOUSE.—Jas. L. Willis. Seven blocks from station. Accommodations for three hundred and fifty guests. Rate, \$2.

HOTEL JENNINGS.—Clarkson Jennings. Ten blocks from station. Accommodations for eighty guests. Rate, \$2.

CENTRAL HOTEL.—Geo. W. Ortlip. Six squares from station. Accommodations for seventy-five persons. Rate, \$2 per day.

DELAWARE HOUSE.—Wm. Legg. Five squares from station. Accommodations for thirty guests. Rate, \$1.50 per day.

THE GABLES.—Mrs. J. E. Orchard. Ten squares from station. Accommodations for thirty-five guests. Rates, \$8 to \$13 per week.

# PHILADELPHIA, WILMINGTON & BALTIMORE RAILROAD.

## *CENTRAL DIVISION.*

### FORTY-NINTH STREET, PHILADELPHIA.

Distance, 3.3 miles. 17 trains each way on week-days; 10 on Sundays.  
Running time, 10 minutes. Fare, 10 cents; package tickets (14 in a strip) issued  
at a rate of \$1; 2-day excursion rate, 15 cents.

Truly a most handsome and conspicuous section of Philadelphia is this, with its rows and rows of beautiful homes of more or less uniformity abounding on all sides, occasionally relieved by a new and pretentious house. It is unquestionably a choice and picturesque quarter of the city. No manufacturing industries of any kind are within its confines or neighborhood, and the accessibility to the heart of the city, either by street cars or the faster and more comfortable medium of steam cars, tends in a great degree to further popularize an already highly appreciated station.

The magnificent grounds of the Belmont Cricket Club lie just beyond the tracks, and wonderfully enhance the general attractiveness.

### ANGORA, PHILADELPHIA.

Distance, 4.6 miles. 17 trains each way on week-days; 10 on Sundays.  
Running time, 14 minutes. Fare, 14 cents; 2-day excursion rate, 20 cents. Family  
tickets, \$5.10; quarterly, \$10.95; monthly, \$4.05; school, \$2.70.

Angora is pretty and open, and contains numerous first-class residences and building sites. This division of the Philadelphia, Wilmington & Baltimore Railroad is peculiarly wild and romantic in appearance; the untamed nature intensifying at each succeeding station. Although scarcely a stone's-throw from a most populous region, this picturesque aspect becomes noticeable here.

## FERNWOOD, PA.

Distance, 5.5 miles. 17 trains each way on week-days; 10 on Sundays.  
Running time, 17 minutes. Fare, 17 cents; 2 day excursion rate, 25 cents. Family tickets, \$6.10; quarterly, \$11.75; monthly, \$4.35; school, \$2.90.

The very convenient distance from the city, and the charm of being safely beyond the hot breath of activity, have gone far in building up what is now quite a large and annually increasing settlement. The resident population of a thousand enjoy several churches and schools of their own.

WILD ORCHARD MANSION.—Mr. Wagner. Twelve minutes' walk from station. Accommodations for forty guests. Rates, \$10 to \$12 per week. Open May to November.

FARM HOUSE.—Mr. Caleb Bonsall. Five minutes from station. Accommodations for eight people. Rates, \$5 to \$6 per week.

## *THE PHILADELPHIA & DELAWARE COUNTY R. R.*

The Philadelphia & Delaware County Railroad, extending from Fernwood to Newtown Square, a distance of nine and a half miles, has been constructed during the past winter and spring, and will be opened to travel and traffic about July 1st. The road will penetrate the most fertile portion of Delaware County, and open up to suburban settlement a most picturesque and healthful section. There are few portions of the country surrounding Philadelphia where so much of quiet beauty and scenery, unmarred by the touch of man, can be found.

## LANSDOWNE, PA.

Distance, 6.4 miles. 19 trains each way on week-days; 10 on Sundays.  
Running time, express 13 minutes, accommodation 20 minutes. Fare, 20 cents; 2-day excursion rate, 25 cents. Family tickets, \$7; quarterly, \$12.60; monthly, \$4.65; school, \$3.10.

Lansdowne has the reputation, and deservedly too, of being one of the finest and most desirable points on this division, and, in fact, on any division of the Pennsylvania Railroad. It is a well-established and popular suburb, with many attractions and conveniences. Rich in rural scenery, and situated almost within a quarter of an hour's ride of Broad Street Station, it certainly has highly substantial recommendations in its favor.

LANSDOWNE VILLA.—Mrs. A. M. Baker. Opposite station. Accommodations for forty guests. Rates, \$10 to \$12 per week.

LANSDOWNE MANSION.—Mrs. A. L. Powell. Five minutes from station. Accommodations for thirty people. Open all year.

EVERGREEN LODGE.—Miss E. E. Taylor. Four minutes from station. Accommodations for fifty people. Open all year.

MANSION.—Mrs. J. M. Macaully. Quarter mile. Open all year.

## BURMONT, PA.

Distance, 7.0 miles. 17 trains each way on week-days; 10 on Sundays.

Running time, 22 minutes. Fare, 21 cents; 2-day excursion rate, 30 cents. Family tickets, \$7.60; quarterly, \$12.95; monthly, \$4.80; school, \$3.20.

Burmонт is a place that has grown considerably during the last few years, and indications point to a still greater increase in its population, which is now about six or seven hundred.

A distinguished appearance is given the place by its being the site of some exceedingly large and pretentious country-seats.

## CLIFTON, PA.

Distance, 7.6 miles. 19 trains each way on week-days; 10 on Sundays.

Running time, express 15 minutes, accommodation 24 minutes. Fare, 23 cents; 2-day excursion rate, 30 cents. Family tickets, \$8.20; quarterly, \$13.40; monthly, \$4.95; school, \$3.30.

This is a well-built, thickly-settled, and prosperous station of some twenty-five hundred souls, occupying houses of all sizes and styles of ornamentation. The popularity of Clifton is due undoubtedly to its advantageous location and the facilities to be enjoyed. Between here and Burmонт is a deep ravine, whose sloping, wooded sides form a pleasing though wild looking scene.

CLIFTON HOTEL.—Mr. Jacob Young. Accommodations for twenty persons. Rate, \$7 per week. Open all year.

TERRACE HALL.—Mr. Isaac Lobb. Three hundred yards from station. Accommodations for twenty-five persons. Open May to October. Rates, \$6 to \$9 per week.

BOARDING-HOUSE.—Mrs. J. M. Whiteman. Five minutes from station. Accommodations for thirty persons. Rates, \$6 to \$9 per week.



## PRIMOS, PA.

Distance, 8.2 miles. 17 trains each way on week-days; 10 on Sundays. Running time, 25 minutes. Fare, 25 cents; 2-day excursion rate, 35 cents. Family tickets, \$8.80; quarterly, \$14.15; monthly, \$5.25; school, \$3.50.

This immediate section is as yet but sparsely settled. The country is open, and available in many ways for the building of homes.

## SECANE, PA.

Distance, 8.9 miles. 17 trains each way on week-days; 10 on Sundays. Running time, 29 minutes. Fare, 27 cents; 2-day excursion rate, 35 cents. Family tickets, \$9.50; quarterly, \$14.60; monthly, \$5.40; school, \$3.60.

Secane's popularity is accounted for in the picturesque woodland environing the place. This attractive, natural qualification is supplemented in summer by carefully-trimmed trees and shrubbery, and well-attended roadways, and again by the comfort and entertainment provided by the summer inns.

HIGHLAND INN.—Mr. Lynn Hahn. Half-mile from station. Opens May 1st. Accommodations for one hundred and fifty. Rates, \$9 to \$15 per week.

WILLOWBROOK HOUSE.—Mrs. S. S. Harned. One-quarter of a mile from station. Accommodations for sixty people. Opens May 1st. Rates, \$6 to \$15 per week.

## MORTON, PA.

Distance, 10 miles. 20 trains each way on week-days; 10 on Sundays. Running time, express 21 minutes, accommodation 32 minutes. Fare, 30 cents; 2-day excursion rate, 40 cents. Family tickets, \$10.60; quarterly, \$15.45; monthly, \$5.70; school, \$3.80.

With Morton on the north and Rutledge on the south of the railroad tracks, two villages of no mean proportions are allied, and together form quite an interesting suburban quarter. With these numerous dwellings and improvements and conveniences of all kinds, Morton bids fair to become one of the most populous on the division.

FARADAY PARK HOTEL.—Accommodations for fifty persons. Open May to November. Rates, \$7 to \$15 per week.

## SWARTHMORE, PA.

Distance, 11.4 miles. 20 trains each way on week-days; 10 on Sundays.  
 Running time, express 24 minutes, accommodation 35 minutes. Fare, 34 cents; 2-day  
 excursion rate, 45 cents. Family tickets, \$11.90; quarterly,  
 \$16.65; monthly, \$6.15; school, \$4.10.

Swarthmore College, a renowned co-educational institution, founded by members of the Society of Friends, and from which the station takes its name, is the one absorbing feature of interest at this place.

Apart from this, however Swarthmore presents many other claims for consideration. Hundreds of well-built houses of pretty designs spread over a large territory, illuminated at night by electricity.

A new and modern inn has chosen Swarthmore for its home, and lends a new importance.

STRATHAVEN INN.—Mrs. M. H. Hanson. One-quarter of a mile from station. Accommodations for two hundred. Rates, \$10 to \$20 per week.

FARM HOUSE.—Mrs. R. J. Gilpin. Open June to October. One-half of a mile from station. Accommodations for forty persons. Rates, \$8 to \$10 per week.

QUEEN ANNE COTTAGE.—Mrs. A. B. Marshall. Half a mile from station. Capacity, fifteen persons. Open all the year. Rates, \$10 to \$12 per week.

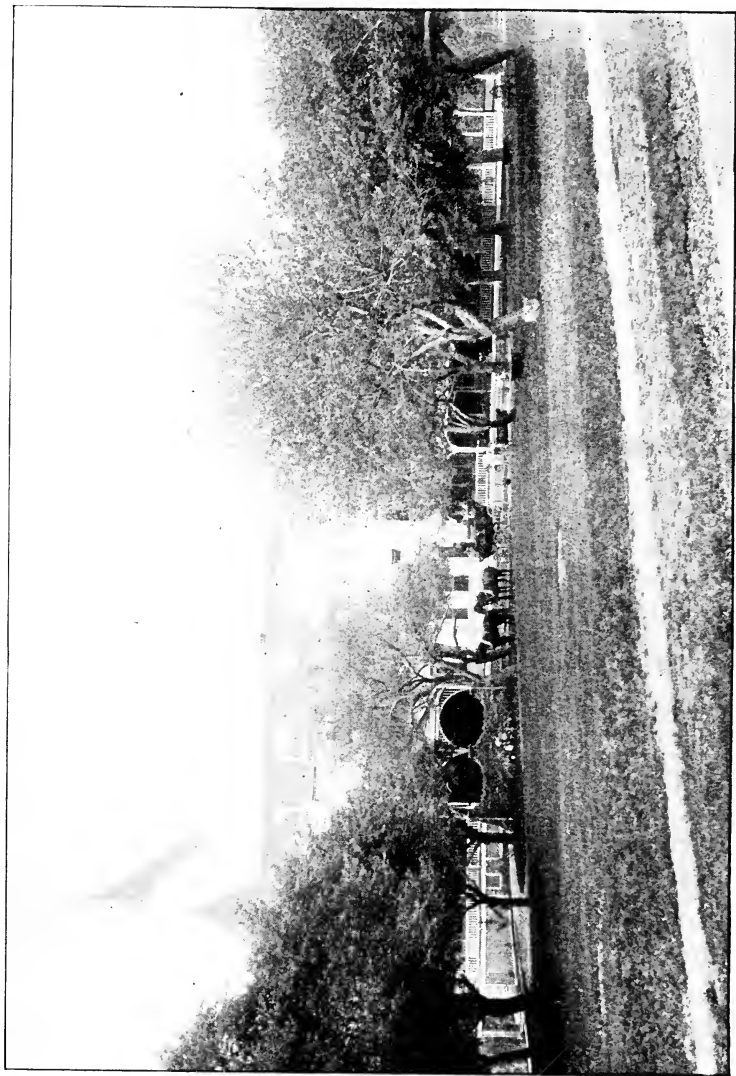
## WALLINGFORD, PA.

Distance, 12.4 miles. 22 trains each way on week-days; 10 on Sundays.  
 Running time, express 22 minutes, accommodation 39 minutes.

Woodland and meadow divide honors in beautifying this remarkably handsome suburb of Philadelphia, and these natural endowments silently yielding to the cultivation of man, a most gratifying effect has been the result. Crum Creek, a stream flowing along in the vicinity, furnishes good fishing.

TODMORDEN HALL.—Mr. Jos. H. Palmer. One mile from station. Accommodations for thirty persons. Rates, \$12 to \$16 per week.

THE MANSION.—Mrs. G. D. Worrall. Five minutes from station. Accommodations for fifty persons. Rates, \$8 to \$18 per week.



STRATHAVEN INN, SWARTHMORE, PA.

GREEN BANK FARM.—Mrs. John Pancoast. One mile from station. Accommodations for thirty-five persons. Open May 1st to November 1st. Rates, \$8 to \$10 per week.

FARM HOUSE.—Mr. E. V. Martin. Seven minutes' walk. Accommodates fifteen to twenty persons. Open May 1st to October 1st. Rates, \$8 to \$9 per week.

FARM HOUSE.—Mr. Joseph Morris. Two miles from station. Accommodates twelve persons. Open May to November. Rates, \$6 to \$10 per week.

### MOYLAN, PA.

Distance, 13.3 miles. 20 trains each way on week-days; 10 on Sundays.

Running time, express 30 minutes, accommodation 42 minutes. Fare, 40 cents; 2-day excursion rate, 55 cents. Family tickets, \$13.90; quarterly, \$18.25; monthly, \$6.75; school, \$4.50.

This sedate spot has been selected as the site of several beautiful country homes, and, like its big neighbor on the west,—Media,—is surrounded by a rich farming country, destined to be invaded some day by building operations.

FARM HOUSE.—Mr. John Booth. Ten minutes from station. Accommodations for fifteen persons. Rates, \$8 to \$10 per week.

### MEDIA, PA.

Distance, 14 miles. 24 trains each way on week-days; 10 on Sundays.

Running time, express 28 minutes, accommodation 44 minutes. Fare, 42 cents; 2-day excursion rate, 55 cents. Family tickets, \$14.60; quarterly, \$18.65; monthly, \$6.90; school, \$4.60.

Media, the county-town of Delaware County, with a population of twenty-five hundred, rests on the crest of a large hill, with the prettiest of surroundings. It is a model place for suburban residence, with its elegant villas, excellent summer inns, gas, electric lights, water-works, and trolley lines, not to mention churches of all kinds, and the best of schools. Fine roads stretch out in every direction from this well regulated municipality, through a country of great beauty and variety.

**IDLEWILD.**—Messrs. J. H. & A. L. Hawkins. Four hundred yards from station. Accommodations for one hundred persons. Open from May to November. Rates, \$15 to \$30 per week.

**HALDEMAN HOUSE.**—Half a mile from station. Accommodations for one hundred persons. Rates, \$10 per week and upwards.

**BROOKE HALL.**—Mrs. Featherson. Three minutes from station. Accommodates one hundred guests. Open June to October. Terms moderate.

**CHARTER HOUSE.**—Mr. P. L. Smith. Five minutes' walk from station. Accommodates sixty persons. Open all the year. Rates, \$7 and upwards.

**THE MANSION.**—Mrs. A. L. Wright. Ten minutes from station. Accommodations for sixty persons. Open May to November. Rates, \$2 per day, \$10 to \$15 per week.

**DALE MANSION.**—Mrs. Theo. Entrekin. Two minutes from station. Accommodates forty guests. Rates, \$7 to \$12 per week.

**BOARDING-HOUSE.**—Mrs. Mary L. Haddock. One-quarter of a mile from station. Accommodates twelve persons. Open all the year. Rates, \$5 to \$7.

**FARM HOUSE.**—Mr. Jno. Pancoast. One-half mile from station. Accommodates twenty-five guests. Rate, \$7 per week.

## ELWYN, PA.

Distance, 15.1 miles. 17 trains each way on week-days; 10 on Sundays.

Running time, express 32 minutes, accommodation 47 minutes. Fare, 46 cents; 2-day excursion rate, 60 cents. Family tickets, \$15.70; quarterly, \$19.45; monthly, \$7.20; school, \$4.80.

Directly opposite the station is the Elwyn Excursion Grove, affording a beautiful and attractive ground for picnic parties. The Pennsylvania Institution for Feeble-Minded Children, an exceedingly large and worthy establishment, is located near the station. The country is open and affords fine opportunities for building.

**FARM HOUSE.**—Mrs. W. D. Reed. One mile from station. Accommodations for eight persons. Rates, \$5 to \$8 per week.

## GLEN RIDDLE, PA.

Distance, 16.7 miles. 17 trains each way on week-days; 10 on Sundays.  
 Running time, express 36 minutes, accommodation 52 minutes. Fare, 50 cents; 2-day  
 excursion rate, 65 cents. Family tickets, \$17.20; quarterly,  
 \$20.65; monthly, \$7.65; school, \$5.10.

Several picturesque little hamlets lie on the hills around, and are principally maintained by the extensive cotton mills of the place. Boating, bathing, and fishing are to be found by those at leisure.

## LENNI, PA.

Distance, 17.4 miles. 17 trains each way on week-days; 10 on Sundays.  
 Running time, express 38 minutes, accommodation 54 minutes. Fare, 52 cents; 2-day  
 excursion rate, 70 cents. Family tickets, \$17.90; quarterly,  
 \$21.50; monthly, \$7.95; school, \$5.30.

Chester Creek broadens out and relieves in effect the busy scene of manufacturing which is more or less in view here. Like Glen Riddle, the enjoyments which a stream of water affords are within easy reach.

MAHLON WOOD HOUSE.—Mrs. Dodd. One square from station. Accommodations for eight persons.

## WAWA, PA.

Distance, 18.1 miles. 19 trains each way on week-days; 10 on Sundays.  
 Running time, express 40 minutes, accommodation 57 minutes. Fare, 54 cents; 2-day  
 excursion rate, 75 cents. Family tickets, \$18.60; quarterly, \$21.90;  
 monthly, \$8.10; school, \$5.40.

Wawa is the junction of the West Chester Branch with the Central Division, and quite a busy little railroad centre. Besides this importance it appeals to the consideration of the home-seeker. On the eminences rising to a no mean degree on all sides of the station are built comfortable country residences.

The Chester Creek Branch of the Central Division runs off at Wawa, and, following the path of the creek, after which the branch has been named, strikes Lamokin, on the Maryland Division, at a distance of seven miles.

ROCKDALE, MT. ALVERNO, KNOWLTON, MORGAN, BRIDGEWATER, and UPLAND the stations present numerous choice building sites.

These points enjoy the same advantages as those on the main divisions, and, in some instances, are even more desirable from a residential standpoint.

FARM HOUSE AT WAWA.—Mr. James Donovan. One mile from station. Accommodations for twenty persons. Rate, \$7 per week.

### CHESTER HEIGHTS, PA.

Distance, 19.3 miles. 5 trains each way on week-days; 2 on Sundays.

Running time about 45 minutes. Fare, 58 cents; 2-day excursion rate, 80 cents.

Family tickets, \$19.80; quarterly, \$23.10; monthly, \$8.55; school, \$5.70.

The feature of Chester Heights is the camp-meeting ground directly adjoining the station. These meetings are held under the auspices of the Methodist Episcopal Conference, who chose this place as being accessible and eligible for all their needs,—a selection on their part which proves the desirability of the station for other usages.

### MARKHAM, PA.

Distance, 21.4 miles. 5 trains each way on week-days; 2 on Sundays.

Running time about 51 minutes. Fare, 64 cents; 2-day excursion rate, 85 cents.

Family tickets, \$21.90; quarterly, \$24.75; monthly, \$9.15; school, \$6.10.

This is in the midst of a farming district, and advantageously situated for the enjoyment of the delights to be experienced in the country, and yet be within a convenient distance of the city.

### CONCORD, PA.

Distance, 22.3 miles. 5 trains each way on week-days; 2 on Sundays.

Running time about 54 minutes. Fare, 67 cents; 2-day excursion rate, 90 cents.

Family tickets, \$22.70; quarterly, \$25.15; monthly, \$9.30; school, \$6.20.

Concord is a village of about five hundred inhabitants, who are proud of the fact that some of the most finely-appointed dairy farms in the country are to be found there. Two Friends' meeting-houses, a church and a school make up the social part of the colony.

MAPLEWOOD.—Mr. Joseph Shortlidge. Half mile from station. Accommodations for seventy-five persons. Rates, \$5 to \$10 per week. Open May 15th to October 1st.

FARM HOUSE.—Mr. George Rush. Open May to November. Half mile from station. Accommodations for twenty persons. Rate, \$10 per week.

## BRANDYWINE SUMMIT, PA.

Distance, 24.1 miles. 5 trains each way on week-days; 2 on Sundays. Running time about 59 minutes. Fare, 73 cents; 2-day excursion rate, \$1. Family tickets, \$24.70; quarterly, \$26.75; monthly, \$9.90; school, \$6.60.

The country round-about is quiet and retired. It is in the centre of a very fertile and pretty farming district, and abounds in fresh products, pure air and water. Probably three hundred people are included in its rolls.

BOARDING-HOUSE.—Mrs. J. S. Windle. Three minutes from station. Accommodations for seven persons. Rate, \$8 per week.

BOARDING-HOUSE.—Miss Ray Smith. Three minutes from station. Accommodations for four male guests. Rate, \$8 per week.

BOARDING-HOUSE.—Mrs. John E. Hepburn. Three minutes from station. Accommodations for six guests. Rate, \$8 per week.

## CHADD'S FORD, PA.

Distance, 26.8 miles. 5 trains each way on week-days; 2 on Sundays. Running time, about 1 hour 5 minutes. Fare, 80 cents; 2-day excursion rate, \$1.10. Family tickets, \$27.30; quarterly, \$29.15; monthly, \$10.80; school, \$7.20.

Few remaining signs of the stirring scenes once enacted on its ground in Revolutionary times are retained in this unpretentious little place. Washington's and Lafayette's headquarters are still standing, but the grim, warlike aspect has given way to a cool, inviting appearance, which every summer draws a quota of visitors. Brandywine Creek meekly flows along nearby, without the slightest disposition to recite of its historical associations with our brave ancestral defenders and their tyrannical oppressors.

CHADD'S FORD HOTEL.—Mr. J. H. Twaddell. One square from station. Accommodates twenty persons. Rate, \$8 per week. Open all the year.

BOARDING-HOUSE.—Mr. Caleb Brinton, Jr. Two miles from station. Accommodations for twenty persons. Rates, \$8 to \$10 per week. Open May to November.

PRIVATE FARM HOUSE.—Mr. J. M. Bullock. Two and one-half miles from station. Accommodations for fifteen persons. Open May 1st to November 1st. Rates, \$4.50 to \$8 per week.



FARM HOUSE.—Mr. P. C. Bullock. One mile from station. Accommodations for eight persons. Open May to October. Rates, \$4.50 to \$8 per week.

BOARDING-HOUSE.—Mrs. G. K. Barney. One mile from station. Capacity ten. Open May to October. Rates, \$8 to \$10 per week.

## FAIRVILLE, PA.

Distance, 29.7 miles. 5 trains each way on week-days; 2 on Sundays.

Running time, about 1 hour 16 minutes. Fare, 89 cents; 2-day excursion rate, \$1.20.

Family tickets, \$30.20; quarterly, \$31.20; monthly, \$11.55; school, \$7.70.

Those in quest of the repose of country life will find it here in perfection. The population of one hundred and fifty is increased about a hundred by the people of Hammonton, a little village adjoining Fairville, but so close that they are virtually one and the same.

FARM HOUSE.—Mr. A. M. Woodward, Mendenhall P. O. One-half mile from station. Accommodations for ten persons. Open May to November. Rates, \$5 to \$8 per week.

## ROSEDALE, PA.

Distance, 30.9 miles. 5 trains each way on week-days; 2 on Sundays.

Running time, about 1 hour 20 minutes. Fare, 93 cents; 2-day excursion rate, \$1.25.

Family tickets, \$31.40; quarterly, \$32.40; monthly, \$12; school, \$8.

The country around Rosedale is hilly; the views extended and of a picturesque character. A public school and a Friends' meeting-house are supported by the hundred or so inhabitants.

FARM HOUSE.—Mr. G. F. Pickel. Open June to November. One-fourth of a mile from station. Accommodations for twenty persons. Rates, \$5 to \$8 per week.

FARM HOUSE.—Mr. Davis Huey, proprietor. One mile from station. Accommodations for fifteen persons. Rates, \$5 to \$8 per week. Open June to November.

FARM HOUSE.—Mrs. E. W. Baldwin. One-half mile from station. Accommodations for thirty persons.

FARM HOUSE.—Mr. A. M. Woodward. One-half mile from station. Accommodations for thirty persons. Rates, \$5 to \$8 per week.

## KENNETT, PA.

Distance, 33.5 miles. 5 trains each way on week-days; 2 on Sundays.  
 Running time, about 1 hour 26 minutes. Fare, \$1.01; 2-day excursion rate, \$1.35.  
 Family tickets, \$34; quarterly, \$34.45; monthly, \$12.75; school, \$8.50.

Kennett, or Kennett Square as it is often called, is a very prosperous and well-governed place. It has a population of probably eighteen hundred and spreads out over a good-sized area, a large part of which lies on a prominent eminence overlooking the station and the country for miles around. Its altitude renders it most healthful, and its formation in the shape of dainty and well-built houses heightens its attractiveness to a considerable extent. It has always been highly esteemed as a suitable and well-adapted summer retreat. Bayard Taylor, literateur, poet, and traveler, was born and bred within its pretty confines.

KENNETT HOTEL.—Accommodations for twenty-five persons. Rates, \$2 per day, \$5 to \$10 per week. Open all year. One-quarter of a mile from station.

FARM HOUSE.—Mr. John Hadley. Open June to November. One mile from station. Accommodations for twenty persons. Rates, \$5 to \$10 per week.

FARM HOUSE.—Mr. Ellis Hughes. Open June to November. One-quarter of a mile from station. Accommodations for twenty persons. Rates, \$5 to \$10 per week.

## DARLINGTON, PA.

Distance, 18.7 miles. 12 trains each way on week-days; 5 on Sundays.  
 Running time, express 45 minutes, accommodation 59 minutes. Fare, 56 cents; 2-day excursion rate, 85 cents. Family tickets, \$19.20; quarterly, \$22.25; monthly, \$8.25; school, \$5.50.

For a quiet, restful locality, Darlington stands almost unequaled. Modestly and peacefully pursuing the even tenor of its way, and paying but little attention to the struggle for popularity, it is thoroughly suitable as a place of residence.

## GLEN MILLS, PA.

Distance, 20.3 miles. 13 trains each way on week-days; 5 on Sundays.  
 Running time, express 45 minutes, accommodation 1 hour 2 minutes. Fare, 61 cents; 2-day excursion rate, 90 cents. Family tickets, \$20.80; quarterly, \$23.90; monthly, \$8.85; school, \$5.90.

Few points on the Central Division present better natural advantages for summer homes than Glen Mills. Its position is healthful in every

way; fresh air, dry ground, and pure water being powerful agencies in creating this highly valuable attraction.

FARM HOUSE.—Mr. Thos. W. Hemphill. Half mile from station. Open June to November. Accommodations for twenty persons. Rates, \$6 to \$8 per week.

### CHEYNEY, PA.

Distance, 22.5 miles. 13 trains each way on week-days; 4 on Sundays. Running time, express 55 minutes, accommodation 1 hour 7 minutes. Fare, 68 cents; 2-day excursion rate, \$1. Family tickets, \$23; quarterly, \$25.50; monthly, \$9.45; school, \$6.30.

By its secluded situation Cheyney has drawn a number of people whose vacation's paramount object is rest and quiet. Chester Creek, murmuringly following the road-bed of the West Chester Branch, supplies rather a fair fishing-ground. Accommodations sufficient to gratify ordinary wants are to be obtained.

BOARDING-HOUSE.—Mrs. E. Fink. Three minutes from station. Accommodations for six persons. Rate, \$8 per week.

### WESTTOWN, PA.

Distance, 24 miles. 13 trains each way on week-days; 4 on Sundays. Running time, express 53 minutes, accommodation 1 hour 10 minutes. Fare, 72 cents; 2-day excursion rate, \$1.15. Family tickets, \$24.50; quarterly, \$26.75; monthly, \$9.90; school, \$6.60.

There is again that charm of seclusion here, an element that impresses itself immediately on entering this pretty section, with its fields and farms and scattered homes. A large Friends' school is close by the neat little station.

### OAKBOURNE, PA.

Distance, 25.5 miles. 12 trains each way on week-days; 4 on Sundays. Running time, express 1 hour 3 minutes, accommodation 1 hour 14 minutes. Fare, 77 cents; 2-day excursion rate, \$1.25. Family tickets, \$26; quarterly, \$27.95; monthly, \$10.35; school, \$6.90.

Like all the land along this subdivision of the road is that surrounding this suburb of West Chester; devoted to farming. It offers opportunities, however, for the building of private suburban homes, and, with its proximity to West Chester, there is obviously another good reason in commending it for that purpose.

## WEST CHESTER, PA.

Distance, via P. W. & B. R. R., 27.4 miles, and via Pennsylvania R. R., 30.6 miles.  
 13 trains via P. W. & B. R. R. each way on week-days, and 13 trains  
 via Pennsylvania R. R.; 4 trains via P. W. & B. R. R. on  
 Sundays, and 6 trains via Pennsylvania R. R.

West Chester is unquestionably one of the most handsome and flourishing towns of the State, and possesses to a noticeable degree a neat, comfortable, and well-to-do appearance. It is the county-seat of Chester County, and numbers about ten thousand inhabitants.

An evidence of progressiveness and worth is on all sides,—gas, electric light, water-works, hundreds of fine stores, a dozen churches, numerous schools, including the State Normal School, one of the largest and most impressive educational buildings in the country,—to say nothing of the trolley lines, an invention adopted by West Chester some time before Philadelphia enjoyed the same means of local conveyance. The fire and police departments are especially efficient, and the newspapers of the town stand second to none in the State.

Too much cannot be said of West Chester; for aside and apart from its other advantages, that of being most fittingly adapted for either summer or winter residence, strikingly manifests itself. High and dry, it is always several degrees cooler in the warm months than Philadelphia, and the country surrounding it is varied and beautiful.

**TURK'S HEAD HOTEL.**—Mr. Frank Head. Three blocks from station. Accommodations for eighty persons. Rate, \$12 per week.

**MANSION HOUSE.**—Mr. John A. Hannum. Four blocks from station. Accommodations for fifty persons. Rates, \$8 to \$12 per week.

**GREEN TREE HOTEL.**—Mr. J. Speakman. Four blocks from station. Accommodations for fifty persons. Rates, \$8 to \$10 per week.

**EAGLE HOTEL.**—Mr. E. P. Newlin. Three blocks from station. Accommodations for fifty persons. Rates, \$7 to \$12 per week.

**MATLACK HOMESTEAD.**—Miss Eva Matlack. One mile from station. Capacity, sixty. Rates, \$10 to \$20 per week. Open May to September.

**BOARDING-HOUSE.**—Miss J. J. Few. Ten minutes from station. Accommodations for twenty persons. Rates, \$6 to \$12 per week.

**BOARDING-HOUSE.**—Mrs. M. E. Hayes. Eight minutes from station. Accommodations for twenty-five persons. Rates, \$5 to \$7 per week.

# PENNSYLVANIA RAILROAD.

---

## *AMBOY DIVISION.*

### CAMDEN & AMBOY RAILROAD.

---

#### DELAIR, N. J.

Distance, 5.8 miles. 14 trains each way on week-days; 4 on Sundays.  
Running time, 22 minutes. Fare, 14 cents; 2-day excursion rate, 25 cents. Family tickets, \$5.70; quarterly, \$12.20; monthly, \$4.50; school, \$3.

On high ground, overlooking the deep waters of the Delaware, is Delair, with its cluster of artistic homes surrounded by spacious grounds and bordered by wide, well-graded streets. As a suburb for building at reasonable cost, Delair is held in favor.

#### WEST PALMYRA, N. J.

Distance, 8 miles. 14 trains each way on week-days; 4 on Sundays.  
Running time, 25 minutes. Fare, 20 cents; 2-day excursion rate, 30 cents. Family tickets, \$8; quarterly, \$13.80; monthly, \$5.10; school, \$3.40.

The phenomenal growth experienced by Palmyra during the past five years necessitates this station for the better accommodation of those living beyond the original site. So rapid has been the increase in population that two sections are now consolidated, and the line of separation indistinguishable.

## PALMYRA, N. J.

Distance, 8.5 miles. 18 trains each way on week-days; 4 on Sundays.

Running time, express 23 minutes, accommodation 30 minutes. Fare, 21 cents; 2-day excursion rate, 30 cents. Family tickets, \$8.50; quarterly, \$14.25; monthly, \$5.25; school, \$3.50.

Even in this town-making country, where cities spring up in a single night, Palmyra holds its own and compares favorably with the booming western towns. Its rise has been wonderful, and none the less steady and sure. Four thousand inhabitants now snugly occupy homes of neat design.

**PALMYRA HOTEL.**—Mr. Levis Wallace. Near station. Accommodates twenty-six guests. Open all year. Rates, \$1.50 per day, \$5 to \$8 per week.

**MANSION HOUSE.**—Mr. Charles Hall. One-quarter mile from station. Accommodates twenty guests. Open all the year. Rates, \$5 to \$7 per week.

**WEST END HOTEL.**—Mr. Josiah Wallace. Ten minutes' walk. Accommodates sixteen guests. Open May to November. Rates, \$1.50 per day, \$5 to \$10 per week.

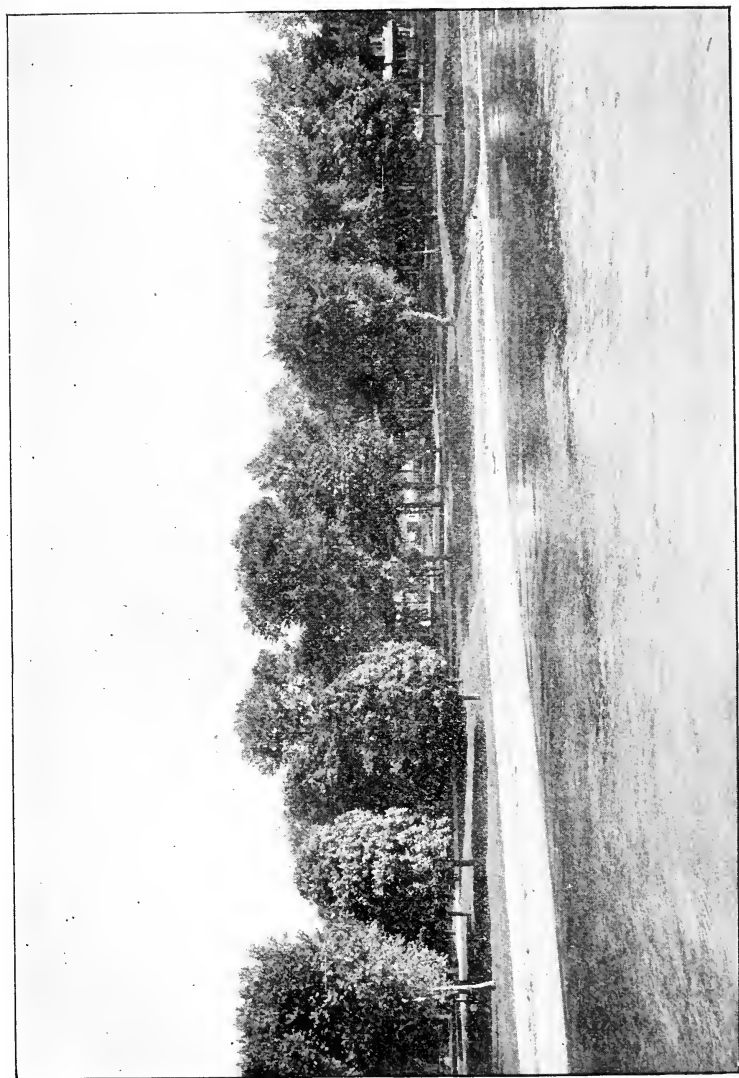
## RIVERTON, N. J.

Distance, 9.2 miles. 19 trains each way on week-days; 4 on Sundays.

Running time, express 23 minutes, accommodation 32 minutes. Fare, 23 cents; 2-day excursion rate, 30 cents. Family tickets, \$9.20; quarterly, \$15; monthly, \$5.55; school, \$3.70.

Naturally endowed with many gifts of nature and highly cultivated by man, Riverton is indeed a most delightful spot. Its wide, shaded streets run down to the river bank, whose green, velvet-like surface forms a distinctive feature, as it extends for a mile in length bordered with palatial residences and by well-kept lawns.

It is a grand haven for yachtsmen, canoeists, lovers of the rod, cricketers, ball and tennis players, and the sandy beach claims its quota in bathing season. From a sanitary standpoint it is very healthful, the malaria theory concerning river-fronts having long ago been exploded. The return each year of the same people, and length of years enjoyed by permanent residents, amply attest the popularity in which it is held. The population, consisting of fifteen hundred, are mainly property-owners.



THE LAWN IN FRONT OF LAWN HOUSE, RIVERTON, N. J.

The exceptionally fine opportunities for summer sojourners are usually captured months in advance, and with all these manifold charms, interspersed with the social attractions which the place offers, there is no gainsaying the fact that Riverton is an ideal nearby resort.

LAWN HOUSE.—Miss E. S. Bell. Three squares from station. Accommodates seventy-five guests. Open May 31st to October 15th. Rates, \$9 to \$25 per week.

PRIVATE MANSION.—Miss Sallie Sickel. Few minutes' walk from station. Accommodates thirty guests. Open all the year. Rates, \$8 to \$15 per week.

### TAYLOR'S, N. J.

Distance, 11 miles. 12 trains each way on week-days; 4 on Sundays. Running time, 29 to 33 minutes. Fare, 28 cents; 2-day excursion rate, 35 cents. Family tickets, \$11; quarterly, \$16.20; monthly, \$6.15; school, \$4.10.

This station is in the midst of an extensive farming centre. Numerous old homes are seen in and around the place, whose delightful situation on the river speaks for itself.

### CAMBRIDGE, N. J.

Distance, 11.8 miles. 11 trains each way on week-days; 4 on Sundays. Running time, 35 minutes. Fare, 30 cents; 2-day excursion rate, 40 cents. Family tickets, \$11.90; quarterly, \$17.05; monthly, \$6.30; school, \$4.20.

Like the connecting village of Taylor's, this place is in every way calculated to draw suburban home-seekers. It is a quiet place, devoted chiefly to farming.

### RIVERSIDE, N. J.

Distance, 12.6 miles. 17 trains each way on week-days; 4 on Sundays. Running time, express 31 minutes, accommodation 42 minutes. Fare, 32 cents; 2-day excursion rate, 45 cents. Family tickets, \$12.60; quarterly, \$17.80; monthly, \$6.60; school, \$4.40.

Riverside is located near the confluence of the Rancocas Creek with the Delaware. It is a very town-like looking place and quite lively. In addition to the manufacturing interests, it presents advantages for building and settling. Four churches, several schools, and all conveniences are within its bounds.



## DELANCO, N. J.

Distance, 13.2 miles. 18 trains each way on week-days; 4 on Sundays.  
 Running time, express 34 minutes, accommodation 43 minutes. Fare, 33 cents; 2-day excursion rate, 45 cents. Family tickets, \$13.20; quarterly, \$18.25; monthly, \$6.75; school, \$4.50.

Delanco is prettily situated on the Rancocas Creek, a short distance above its junction with the Delaware, and is nearly surrounded by water. No better opportunity for sailing, fishing, and bathing could be imagined than that in evidence here on all sides. A score of boat-houses dot the shore of the creek, and give the place a peculiarly inviting appearance.

DELANCO VILLA.—Mr. John H. Briggs. One square from station. Accommodations for twenty persons. Rate, \$8 per week.

## BEVERLY, N. J.

Distance, 15.5 miles. 19 trains each way on week-days; 4 on Sundays.  
 Running time, express 32 minutes, accommodation 54 minutes. Fare, 39 cents; 2-day excursion rate, 55 cents. Family tickets, \$15.50; quarterly, \$19.85; monthly, \$7.35; school, \$4.90.

This pleasant river town is situated at a high elevation above the river, on a commanding bluff, enjoying pure air and an entire freedom from malarious influences. Few points are more deserving of consideration than Beverly, as every requisite for the entertainment of the summer guest is at hand. Water sports of all kinds can be indulged in by those so inclined. The town is a thoroughly-organized corporation, with mayor, police, newspapers, churches, schools, a public park, and a population of over twenty-five hundred.

Considered either as a summer home or a place of permanent residence, Beverly presents strong claims to the notice of the public.

GROVE HOUSE.—Mrs. M. W. Wood. Four squares from station. Accommodates seventy-two guests. Open June 15th to October 1st. Rates, \$9 to \$20 per week.

STEAMBOAT HOTEL.—Mr. David Champion. Four squares from station. Accommodations for one hundred guests. Open all the year. Rates, \$8 to \$15 per week.

BOARDING-HOUSE.—Miss A. Clark. One square from station. Accommodates five guests. Open May to November. Rates, \$7 to \$12 per week.

BOARDING-HOUSE.—Mrs. A. Vansciver. Accommodations for twenty guests. Rates, \$5 to \$8 per week.

## EDGEWATER PARK, N. J.

Distance, 16.4 miles. 18 trains each way on week-days; 4 on Sundays.

Running time, express 42 minutes, accommodations 57 minutes. Fare, 41 cents; 2-day excursion rate, 55 cents. Family tickets, \$16.30; quarterly, \$20.65; monthly, \$7.65; school, \$5.10.

An air of refinement pervades this point and seems to affect everything within reach of the subtle yet powerful influence. Charming pastoral estates stretch along the river bank which is exquisitely adorned by all the arts the landscape gardener commands. Back from the water-front are level, shady avenues, with interwoven trees forming majestic arches of protection from the enervating rays of the sun, and at the same time beautiful picturesque vistas.

The boating, fishing, and bathing are of the best kind, and with the beautiful situation, commanding pure air and water, Edgewater Park presents a rare chance for either transient or permanent settlers.

MANSION.—Miss A. Jenkins. Three minutes' walk. Accommodations for twelve guests. Open all year.

## BURLINGTON, N. J.

Distance, 18.7 miles. 21 trains each way on week-days; 4 on Sundays.

Running time, express 37 minutes, accommodation 58 minutes. Fare, 47 cents; 2-day excursion rate, 60 cents. Family tickets, \$18.70; quarterly, \$22.70; monthly, \$8.40; school, \$5.60.

Burlington, on the Delaware opposite Bristol, is an exceedingly old place, with many historical reminiscences attaching to it. It was first settled by Quakers in 1677, and is noted for its quaint old houses, many of which were built during the Revolution. Many personages of more or less note have had Burlington for a home, and it is now the residence of some of their descendants, and of others who recognize the enjoyments of living beyond a humid city, and appreciate a cool retreat during the summer months.

BELDER HOUSE.—Near station. Capacity, fifty. Rate, \$10 per week.

EXCHANGE HOTEL.—Mr. J. W. Marlin. Capacity, twenty. Rates, \$6 to \$7 per week.

BURLINGTON HOUSE.—Mr. F. H. Bradley. Capacity, twenty. Rate, \$7 per week.

BOARDING-HOUSE.—Miss Lydia Stokes. Capacity, thirty. Rate, \$6 to \$10 per week.

BOARDING-HOUSE.—Mrs. R. H. Ross. Rates, \$6 to \$8 per week.

## FLORENCE, N. J.

Distance, 23.2 miles. 13 trains each way on week-days; 4 on Sundays.

Running time, express 54 minutes, accommodation 1 hour 5 minutes. Fare, 58 cents;

2-day excursion rate, 80 cents. Family tickets, \$23.20; quarterly, \$26.35;

monthly, \$9.75; school, \$6.50.

From the elevated position of this pretty place the surrounding country may be seen reaching out in well-cultivated farms on hill and in dale, and the river below, which is unusually wide, makes a decided bend, seemingly forming a great lake, which, added to the other attractive features, completes the panorama.

EXCHANGE HOTEL.—Mr. W. H. Parker. One mile and a half from station. Accommodates six guests. Rate, \$9 per week.

FLORENCE HOTEL.—Mr. J. Luniak. One and a half miles from station. Accommodates ten persons. Rate, \$9 per week.

## KINKORA, N. J.

Distance, 25 miles. 11 trains each way on week-days; 4 on Sundays.

Running time, express 1 hour, accommodation 1 hour 10 minutes. Fare, 63 cents;

2-day excursion rate, 90 cents. Family tickets, \$25; quarterly, \$27.55;

monthly, \$10.20; school, \$6.80.

Outside of being a railroad junction, Kinkora has few attractions. The fishing is very fine, however,—perch and sunfish being caught in abundance.

## WHITE HILL, N. J.

Distance, 26.9 miles. 11 trains each way on week-days; 4 on Sundays.  
Running time, express 1 hour 9 minutes, accommodation 1 hour 20 minutes. Fare, 67 cents;  
2-day excursion rate, 90 cents. Family tickets, \$26.90; quarterly, \$29.15;  
monthly, \$10.80; school, \$7.20.

This village is composed of about eight hundred inhabitants, whose homes are jauntily perched on the crest of a high bluff, which, overhanging the river, affords an unobstructed view.

FIELDSBORO HOUSE.—Mr. Thos. Maley. One-quarter mile from station. Accommodates fifteen persons. Rates, \$5 to \$7 per week.

THE ORCHARD.—Mr. Wm. Ettenger. One and one-half miles from station. Accommodates ten persons. Rates, \$5 to \$7 per week.

## BORDENTOWN, N. J.

Distance, 28.1 miles. 16 trains each way on week-days; 4 on Sundays.  
Running time, express 55 minutes, accommodation 1 hour 15 minutes. Fare, 70 cents;  
2-day excursion rate, 90 cents. Family tickets, \$28.10; quarterly, \$30.35;  
monthly, \$11.25; school, \$7.50.

Fully sixty feet above the waters of the Delaware, on a high bluff, is this attractive town, with a population consisting of six thousand, who enjoy a number of churches of various denominations, public and private schools, a female college, and a military institute, a bank, newspapers, gas and water supply, and all modern facilities.

Crosswick's Creek unites with the river water here, furnishing fine facilities for boating and fishing, while the numerous shaded walks and drives afford alluring coolness to the pedestrian and driver.

One of the interesting and pleasing features of the city is Bonaparte Park (now a convent), formed from the estate of Joseph Bonaparte, who, after descending from the throne, became a citizen of this charming town the society of which is cultivated and refined.

AMERICAN HOUSE.—Mr. John K. Green. One-half square from station. Accommodates one hundred guests. Open all the year. Rate, \$1.50 per day.

FARM HOUSE.—Mrs. John Lamb. One-half mile from station. Accommodates twenty guests. Open all the year. Rates, \$6 to \$8 per week.

BOARDING-HOUSE.—Mrs. G. S. Bowen. One square from station. Accommodates fifty guests. Rates, \$6 to \$8 per week.

*CAMDEN & BURLINGTON COUNTY BRANCH.*

## DUDLEY, N. J.

Distance, 4 miles. 13 trains each way on week-days; 4 on Sundays.

Running time, 20 minutes. Fare, 12 cents; 2-day excursion rate, 15 cents. Family tickets, \$4; quarterly, \$10.55; monthly, \$3.90; school, \$2.60.

On the eastern outskirts of Camden this station is being rapidly built up with comfortable residences, surrounded by gardens and shaded by great trees. It is near enough to the city to share in its conveniences, while there is enough of the country about to make it a pleasant place of summer residence.

## WELLWOOD, N. J.

Distance, 5.1 miles. 13 trains each way on week-days; 4 on Sundays.

Running time, 21 minutes. Fare, 15 cents; 2-day excursion rate, 20 cents. Family tickets, \$4; quarterly, \$11.75; monthly, \$4.35; school, \$2.90.

Wellwood is so close to Dudley that the description of one applies to the other, except that Wellwood possesses rural features to a greater extent than its neighbor.

## MERCHANTVILLE, N. J.

Distance, 5.6 miles. 17 trains each way on week-days; 4 on Sundays.

Running time, express 21 minutes, accommodation 26 minutes. Fare, 17 cents; 2-day excursion rate, 20 cents. Family tickets, \$4; quarterly, \$12.20; monthly, \$4.50; school, \$3.

Merchantville is situated in a section of New Jersey noted for its healthfulness and desirability of climate. The wide streets and avenues are bordered with residences of striking and artistic design in their architectural beauty, and in the wealth of lawn and flowers enclosing them. Fine old trees shelter the walks and furnish additional picturesqueness to an exceedingly pretty suburb. The accessibility of Merchantville to Philadelphia has been a very potent factor in establishing its wide popularity.

OAK GROVE.—Mrs. M. H. York. One and one-half squares from station. Accommodations for eighty guests. Open all year. Rates, \$7 to \$15 per week.

BOARDING-HOUSE.—Mrs. John Rowbotham. One square from station. Accommodations for twelve persons. Rate, \$7 to \$15 per week.

STOCKTON HOUSE.—Mr. W. W. Pancoast. One and one-half squares from station. Accommodations for twenty guests. Open all year. Rates, \$6 to \$8 per week.

## PENSAUKEN, N. J.

Distance, 6.5 miles. 15 trains each way on week-days; 4 on Sundays.

Running time, 25 minutes. Fare, 20 cents; 2-day excursion rate, 30 cents. Family tickets, \$6.50; quarterly, \$12.55; monthly, \$4.65; school, \$3.10.

On the north of the railroad tracks lies this well-built-up rising community. Eligible sites for building are plentiful in the section, and are rapidly being taken advantage of by those who foresee a bright future.

## MAPLE SHADE, N. J.

Distance, 8.1 miles. 13 trains each way on week-days; 4 on Sundays.

Running time, 30 minutes. Fare, 24 cents; 2-day excursion rate, 35 cents. Family tickets, \$7; quarterly, \$14.15; monthly, \$5.25; school, \$3.50.

Maple Shade occupies a fine position in a very fertile and picturesque county. Neat houses scattered in the midst of a fine farming district lend a thrifty aspect to the general landscape. Half a mile east of Maple Shade a large picnic grove has been opened.

## LENOLA, N. J.

Distance, 9.2 miles. 13 trains each way on week-days; 4 on Sundays.

Running time, 32 minutes. Fare, 28 cents; 2-day excursion rate, 40 cents. Family tickets, \$7.60; quarterly, \$15; monthly, \$5.55; school, \$3.70.

Lenola, formerly Wilson, enjoys alike with other points in Burlington County a name for fertility and healthfulness. It is as yet but a sparsely-settled little place but with its advantageous location bound to come to the front.

## MOORESTOWN, N. J.

Distance, 11.4 miles. 17 trains each way on week-days; 4 on Sundays.  
 Running time, express 26 minutes, accommodation 45 minutes. Fare, 33 cents; 2-day  
 excursion rate, 50 cents. Family tickets, \$9.40; quarterly,  
 \$16.60; monthly, \$6.15; school, \$4.10.

Moorestown, with its opportunities for healthful comfort and quiet happiness, is a dwelling-place good to see and good to live in. The town, long and narrow, lies along a ridge overlooking a lovely valley, and affords most excellent means for building, renting, or visiting within its territory. The town is laid out in broad, airy streets and built up with neat dwellings and cosy cottages, beautified with lawns and gardens. There are two stations in Moorestown for the better accommodation of the large number of residents.

**WEST END HOTEL.**—Mr. S. S. Dager. Three squares from West Moorestown. Accommodations for fifty persons. Rates, \$7 to \$12 per week.

**COLE'S HOTEL.**—Mr. C. C. Cole. Two and one-half squares from East Moorestown. Accommodations for forty persons. Rates, \$8 to \$10 per week.

**CREEDE COTTAGE.**—The Misses Creede. One and one-half squares from East Moorestown. Accommodations for twelve persons. Rates, \$5 to \$8 per week.

## STANWICK, N. J.

Distance, 12 miles. 15 trains each day on week-days; 4 on Sundays.  
 Running time, express 35 minutes, accommodation 45 minutes. Fare, 36 cents; 2-day  
 excursion rate, 55 cents. Family tickets, \$10.30; quarterly,  
 \$17.05; monthly, \$6.30; school, \$4.20.

On one of the highest ridges of ground between the Delaware and the Atlantic is Stanwick, with its pretty collection of new cottages, forming an addition to Moorestown. There are some very pretentious residences in course of construction, which, when completed, will give the modest little point a wealthy and distinguished appearance.

## HARTFORD, N. J.

Distance, 14.1 miles. 13 trains each way on week-days; 4 on Sundays. Running time, 40 to 50 minutes. Fare, 42 cents; 2-day excursion rate, 60 cents. Family tickets, \$12.40; quarterly, \$19; monthly, \$7.05; school, \$4.70.

The location of Hartford, on high, dry ground, commends it as a favorable spot during the warm-weather period. Rancocas Creek, in the vicinity, affords good boating, bathing, and fishing. The town enjoys all the conveniences of a prosperous community.

## MASONVILLE, N. J.

Distance, 15.4 miles. 14 trains each way on week-days; 4 on Sundays. Running time, 43 to 56 minutes. Fare, 46 cents; 2-day excursion rate, 65 cents. Family tickets, \$13.70; quarterly, \$19.85; monthly, \$7.35; school, \$4.90.

Masonville is quite an attractive little village, with its neat frame cottages and desirable position in an acknowledged healthful region. The sites for homes are of such a character as to warrant the rapid building up of the place.

**CENTRETON HOTEL.**—Mr. F. A. Saunders. One mile from station. Accommodations for twenty-five guests. Open May to November.

**FARM HOUSE.**—Mr. Harrison C. Rockhill. One-half mile from station. Accommodations for eight guests. Open May to November. Rates, \$6 to \$8 per week.

**RANCOCAS SPRINGS HOTEL.**—Mr. J. P. Tomlinson. Accommodations for forty persons. Two miles from station.

## HAINESPORT, N. J.

Distance, 17.8 miles. 13 trains each way on week-days; 4 on Sundays. Running time, 55 minutes. Fare, 53 cents; 2-day excursion rate, 70 cents. Family tickets, \$16.10; quarterly, \$21.90; monthly, \$8.10; school, \$5.40.

The soil here being light and porous, absorbs almost instantly all moisture, and with the rural character of the neighboring country many conditions exist that should eventually attract those looking for a summer home. The Rancocas waters the outlying lands.



## MOUNT HOLLY, N. J.

Distance, 19.7 miles. 15 trains each way on week-days; 4 on Sundays.  
 Running time, express 47 minutes, accommodation, 60 minutes. Fare, 59 cents; 2-day  
 excursion rate, 70 cents. Family tickets, \$17.90; quarterly,  
 \$23.50; monthly, \$8.70; school, \$5.80.

Famous as the annual scene of the great Mount Holly Fair, this active little city advances other claims for the recognition of the public. It contains a population of sixty-five hundred, with churches, schools, banks, newspapers, and all the modern and approved methods of a progressive town. From a business stand-point the interests are quite extensive, and, when considered as a place of abode, it has few equals.

The Burlington Branch of the Amboy Division runs off from Mt. Holly in a northerly direction to Burlington; and off to the south for a distance of six and a half miles is the Medford Branch, connecting at Medford with the Camden & Atlantic Railroad.

WEST END HOTEL.—Mr. L. A. Stroud. Accommodations for fifty. Rate, \$7 per week.

ARCADE HOTEL.—Mr. Wm. L. Butterworth. Accommodations for fifty. Rate, \$10 per week.

FARMERS' HOTEL.—Mr. P. J. Costigan. Accommodations for thirty. Rate, \$6 per week.

MILL ST. HOTEL.—Mr. Grant Davis. Accommodations for thirty. Rate, \$6 per week.

WASHINGTON HOUSE.—Mr. B. W. Zellely. Accommodations for twenty-five. Rate, \$7 per week.

## SMITHVILLE, N. J.

Distance, 22.1 miles. 9 trains each way on week-days; 2 on Sundays.  
 Running time, express 53 minutes, accommodation 1 hour 16 minutes. Fare, 66 cents;  
 2-day excursion rate, 85 cents. Family tickets, \$20.40; quarterly,  
 \$25.50; monthly, \$9.45; school, \$6.30.

Productive farming country extends around this thrifty little town whose identity is closely connected with a large bicycle manufactory. It enjoys the good features of Burlington County, of which Jersey is so proud.

## BIRMINGHAM, N. J.

Distance, 24.3 miles, 8 trains each way on week-days; 2 on Sundays.

Running time, 1 hour to 1 hour 30 minutes. Fare, 73 cents; 2-day excursion rate, 94 cents.

Family tickets, \$22.60; quarterly, \$25.90; monthly, \$10.05; school, \$6.70.

Charmingly situated in the great pine belt of New Jersey is Birmingham, a place that is rapidly acquiring deserved distinction. This section of New Jersey is noted for its fine iron and sulphur springs, equal to any in the country for their medicinal qualities. A greatly appreciated adjunct is the winding, picturesque Rancocas Creek. Bordered by shaded walks and bridle-paths it is usually dotted in the summer afternoons with boating or fishing parties, and the woodland around provides desirable retreats for excursionists.

The inn, under new and competent management, is the star attraction, and in its completeness is not surpassed by any summer hotel.

BIRMINGHAM INN.—Mr. Martin O'Brien. Two minutes from station. Accommodations for one hundred and fifty guests. Rates on application.

## NEW LISBON, N. J.

Distance, 28.9 miles. 4 trains each way on week-days; 1 on Sundays.

Running time, 1 hour 10 minutes to 1 hour 50 minutes. Fare, 87 cents; 2-day excursion rate, \$1.17. Family tickets, \$27.20; quarterly, \$30.80; monthly, \$11.40; school, \$7.60.

The proximity of the pine belt, and the land boom which has recently struck New Lisbon, have been highly instrumental in popularizing the station. It is esteemed for its healthfulness, and gives promise of becoming much better known.

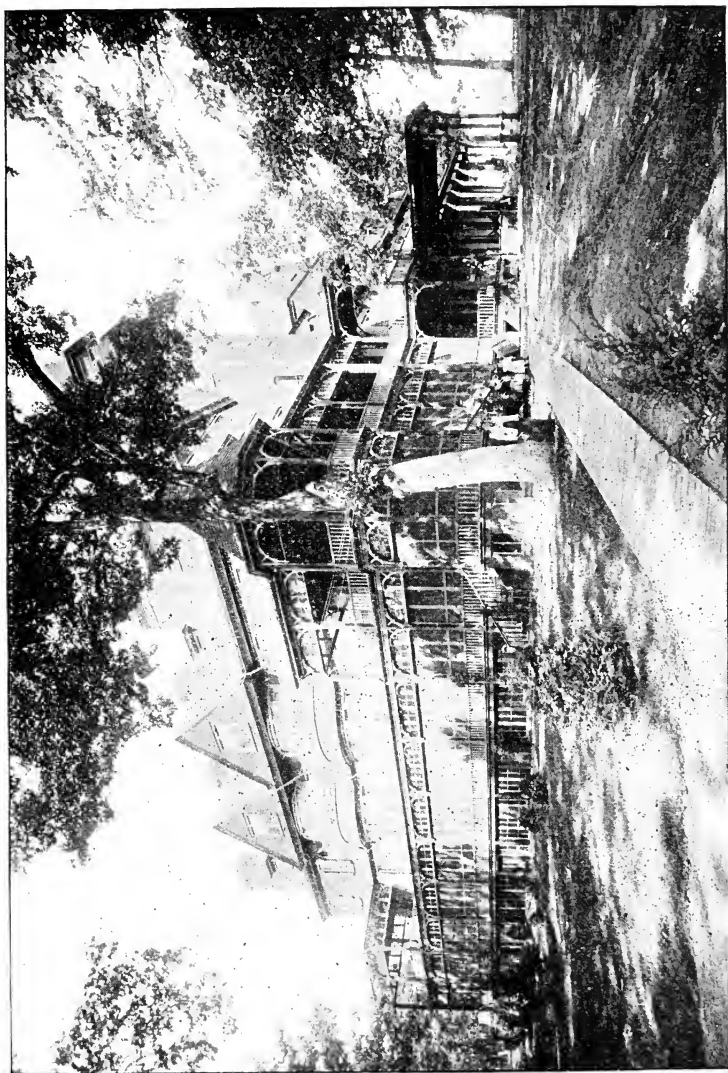
## BROWN'S MILLS-IN-THE-PINES, N. J.

Distance, 32.4 miles. 4 trains each way on week-days; 1 on Sundays.

Running time, 1 hour 10 minutes to 1 hour 40 minutes. Fare, \$1; 2-day excursion rate, \$1.30; 11-day excursion rate, \$1.50. Family tickets, \$30.70; quarterly,

\$33.60; monthly, \$12.45; school, \$8.30.

Brown's Mills-in-the-Pines, as its name would indicate, is located in the heart of the pineries. For many years it has presented a delightful refuge to the summer visitor, and of late its charms for a winter sojourn have been discovered. The resinous odors from the



FOREST SPRINGS HOTEL, BROWN'S MILLS-IN-THE-PINES, N. J.

trees and the cedar-flavored water have endowed it with a widespread reputation for healthfulness. Beside these features, the picturesque scenery of the pine forests and the lake contribute largely to its attractiveness, while iron and sulphur springs supplement the efficacy of the breath of the pines.

A large handsome hotel, fitted with all the conveniences and appointments of modern times, is maintained in the very best style.

FOREST SPRINGS HOTEL.—Mr. James E. Strong. Two minutes from station. Accommodations for two hundred and fifty guests. Rates, \$12 to \$25 per week.

PINE GROVE HOTEL.—Mr. Chas. Smars. One-half mile from station. Accommodations for thirty-five guests. Rate, \$10 per week.

### VINCENTOWN BRANCH.

#### VINCENTOWN, N. J.

Distance, 25.7 miles. 2 trains each way on week-days.

Running time, 1 hour 39 minutes. Fare, 83 cents: 2-day excursion rate, \$1.15. Family tickets, \$28.20; quarterly, \$51.10; monthly, \$18; school, \$12.84.

At the southern end of the Vincentown Branch, three miles from Ewansville, the junction point of the spur, lies Vincentown. It is located in a very desirable part of the county. Fine, healthful country is to be found on all sides, affording suitable ground for the erection of homes or for farming purposes.

HOTEL.—Mr. Frederick Kumpf. Five minutes from station. Rate, \$5 per week.

HOTEL.—Mr. Charles Braddock. Five minutes from station. Rate, \$5 per week.

BOARDING-HOUSE.—Mr. E. Haines. Eight minutes from station. Rate, \$4 per week.

BOARDING-HOUSE.—Mr. L. Nesbitt. Eight minutes from station. Rate, \$4 per week.

## WEST JERSEY RAILROAD.

### GLOUCESTER, N. J.

Distance, 5 miles. 16 trains each way on week-days; 6 on Sundays.  
Running time, 20 minutes. Fare, 10 cents; unlimited excursion rate, 15 cents. Family tickets, \$4; quarterly, \$10.15; monthly, \$3.75; school, \$2.50.

In addition to the manufacturing interests which give employment to three thousand operatives, prominence has been given Gloucester at home and abroad by the renown of its local treat, "planked shad," which, to be properly appreciated and enjoyed, should be partaken of on its native shore, fresh from the waters of the Delaware.

The famous shad-fishing section is located a short distance south of Gloucester proper, and the tributary creeks abound in sport for the amateur or professional wielder of the rod. Gloucester has a population of eight thousand, is lighted by electricity, and churches of all denominations are to be found within its limits.

**SURF HOUSE.**—Mr. Charles C. Haines.—One-half mile from station. Accommodates fifty guests. Open all the year. Rate, \$12 per week.

**MANSION HOUSE.**—Mr. D. A. Howard. One-half mile from station. Accommodates fifteen guests. Open all the year. Rates, \$7 to \$10 per week.

**BUENA VISTA HOTEL.**—Mr. J. J. Foster. One-quarter of a mile from station. Accommodates thirty-five guests. Open all the year. Rates, \$2 per day, \$7 to \$10 per week.

**THOMPSON'S HOTEL.**—Mr. A. Townsend. One-half mile from station. Accommodates thirty guests. Rates, \$2 per day, \$12 per week.

### WESTVILLE, N. J.

Distance, 6.8 miles. 16 trains each way on week-days; 6 on Sundays.  
Running time, 25 minutes. Fare, 20 cents; 10-day excursion rate, 30 cents. Family tickets, \$6.80; quarterly, \$11.40; monthly, \$4.30; school, \$2.85.

Situated on the Great Timber Creek, and within a short distance of the Delaware River, is this town of six hundred inhabitants. Boating and fishing are of the best.

Newbold, which is divided from Westville by the tracks of the West Jersey Railroad, enjoys the same privileges as its sister town.

FALLS HOTEL.—Mr. J. M. Plum. Two squares from station. Accommodates twenty-five guests. Open all the year. Rates, \$1.50 per day, \$7 per week.

## WOODBURY, N. J.

Distance, 9.5 miles. 20 trains each way on week-days; 7 on Sundays.

Running time, 25 to 33 minutes. Fare, 28 cents; 10-day excursion rate, 40 cents. Family tickets, \$9.30; quarterly, \$13.50; monthly, \$5.25; school, \$3.50.

During the summer months, when its fine shade trees and broad, well-kept lawns, upon which fountains play, are seen at their best, no one can justly deny the claim Woodbury makes to being the most beautiful town in this section of the country. Its homes are well filled, and its walks and drives, which reach out both far and near, are thronged by those who get rest, recreation, health, strength, and good living at a moderate cost.

For its five thousand inhabitants it provides churches of various denominations, private and public schools, banks, gas, electricity, and, in fact, the majority of city conveniences. It is the county-seat of Gloucester County.

EVERGREEN HALL.—Mr. Jeffrey C. Batten. Five minutes' walk from station. Accommodates fifty guests. Open May 1st to October 31st. Rates, \$6 to \$10 per week.

PAUL'S HOTEL.—Mr. Joseph Paul. One-quarter of a mile from station. Accommodates fifty guests. Open all the year. Rates, \$7 to \$10 per week.

BOARDING-HOUSE.—Mr. Joseph Morgan. One-quarter of a mile from station. Accommodates twelve guests. Open all the year. Rates, \$4 to \$6 per week.

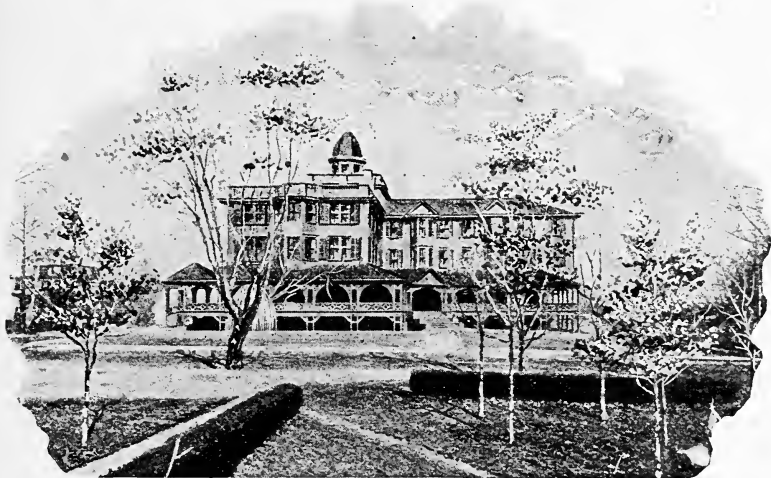
GREENCASTLE MANSION.—Mrs. Parker. A few yards from station. Accommodates forty-five guests. Open all the year. Rate, \$5 per week.

BOARDING-HOUSE.—Mrs. Wescott. One-quarter of a mile from station. Accommodates sixteen guests. Open all the year. Rates, \$4 to \$6 per week.

## WENONAH, N. J.

Distance, 12.6 miles. 17 trains each way on week-days; 3 on Sundays. Running time, 31 to 44 minutes. Fare, 37 cents; 10-day excursion rate, 50 cents. Family tickets, \$12.40; quarterly, \$15.65; monthly, \$6; school, \$4.

Just at a convenient distance from the city, on a healthy, breezy elevation, with fruits and vegetables in profusion at its door, fast train service, a resident population of five hundred, Presbyterian and Methodist Churches, telegraph and telephone communication, several lakes,



its streets and walks graded and shaded, is Wenonah, an ideal summer retreat. A line of stages which connect with all trains run between Wenonah and Mantua, one mile from the town limits.

The summer inn here contributes largely to the character of the place. It is excellently managed, and has all the attractions of a first-class inn.

**WENONAH INN**—Mr. J. F. Piggott. Two hundred yards from station. Accommodations for one hundred guests. Rates, \$15 to \$25 per week.

REEVES' HOTEL (Mantua).—Mr. S. Reeves. Accommodations for twenty guests. Rates, \$5 to \$8 per week.

BOARDING-HOUSE.—Mrs. Bates. Short distance from station. Accommodates five guests. Rate, \$5 per week.

BOARDING-HOUSE. (Mantua).—Mrs. M. Long. Accommodations for five guests. Rate, \$5 per week.

BOARDING-HOUSE. (Mantua).—Mr. Edward Jones. Accommodations for ten guests. Rates, \$5 to \$6 per week.

BOARDING-HOUSE. (Mantua).—Mrs. Blakeley. Accommodations for ten guests. Rates, \$5 to \$6 per week.

### SEWELL, N. J.

Distance, 14.4 miles. 13 trains each way on week-days; 2 on Sundays. Running time, 42 minutes. Fare, 43 cents; 10-day excursion rate, 55 cents. Family tickets, \$14.20; quarterly, \$16.80; monthly, \$6.50; school, \$4.35.

Sewell is a small village, pleasantly located in the midst of trees and shrubbery, on high ground in a beautiful locality, and is noted for its exceptional water supply. Mantua Creek, within a short distance of the village, furnishes good boating, bathing, and fishing. It has two churches, schools, and telegraph facilities.

BARNESBORO HOTEL.—Mr. J. Rachor. One mile away. Accommodates fifteen guests. Open all the year. Rate, \$7 per week.

BOARDING-HOUSE.—Mrs. Frances Pearson. Few yards from station. Accommodates twelve guests. Open June to November. Rates, \$6 to \$8 per week.

BOARDING-HOUSE.—Mr. Chas. Reppe. Few yards from station. Accommodates twelve guests. Open all year. Rate, \$5 per week.

### PITMAN, N. J.

Distance, 17 miles. 13 trains each way on week-days. Running time, 46 minutes. Fare, 50 cents; 10-day excursion rate, 75 cents. Family tickets, \$16.70; quarterly, \$18.60; monthly, \$7.25; school, \$4.85.

As the site of the largest Methodist camp-meeting grounds in the southern part of the State, Pitman, with its four hundred cottages, and double as many hundreds of tents, for the accommodation of visitors in camping time, is well known. A fine grove of trees dispenses a



welcome shade. From a suburban standpoint Pitman holds marked advantages from the fact of its agricultural surroundings. Good boating, bathing, and fishing may be had in Alcyon Lake, nearby.

BOARDING-HOUSE.—Mrs. M. Drake. Opposite station. Accommodates ten guests. Open all the year. Rate, \$6 per week.

BOARDING-HOUSE.—Mr. W. L. Carter. One hundred yards from station. Accommodates twelve guests. Open June to November. Rate, \$6 per week.

JENKINS HOUSE.—Mr. Charles Jenkins. Two miles to Richwood village. Accommodates fifteen guests. Open all the year. Rates, \$5 to \$9.

BOARDING-HOUSE.—Mr. Levi Wiggins. Few yards from station. Accommodates four guests. Open all the year. Rate, \$6 per week.

BOARDING-HOUSE.—Mr. C. P. Carty. One square from station. Accommodates ten guests. Open June to November. Rate, \$6 per week.

BOARDING-HOUSE.—Mrs. Mary A. Reed. Two squares from station. Accommodates four guests. Open June to November. Rate, \$6 per week.

## GLASSBORO, N. J.

Distance, 18.9 miles. 17 trains each way on week-days; 2 on Sundays.

Running time, 38 to 57 minutes. Fare, 56 cents; 10-day excursion rate, 85 cents. Family tickets, \$18.60; quarterly, \$20.05; monthly, \$7.85; school, \$5.25.

Glassboro is situated on one of the highest plateaus between Camden and Cape May, and, being supplied with pure spring water, enjoys the possession of the two elements most conducive to health. It is one of the oldest towns in "South Jersey," and has a population of three thousand. There are seven churches of various denominations, schools, and telegraph facilities. Its chief industry is the manufacturing of glass in all forms.

REEVES' HOTEL.—Mr. J. E. Reeves. Three-quarters of a mile from station. Accommodates forty guests. Open all the year. Rates, \$1.75 per day, \$6 per week.

BOARDING-HOUSE.—Mrs. James A. Haight. Three-quarters of a mile from station. Accommodates six guests. Open all the year. Rate, \$5 per week.

## CLAYTON, N. J.

Distance, 22.5 miles. 5 trains each way on week-days; 2 on Sundays.

Running time, 45 to 63 minutes. Fare, 67 cents; 10-day excursion rate, \$1. Family tickets, \$22.40; quarterly, \$22.95; monthly, \$9; school, \$6.

This village is located on high ground, commanding an extensive and pleasing view of the surrounding country. It has a population of two thousand, with Methodist, Baptist, and Presbyterian Churches, in addition to good stores, telegraph, and mail facilities. Two glass factories furnish the inhabitants who are not of an agricultural leaning with means of employment. Within a short distance is a lake on which boating and fishing may be enjoyed.

DAVIS' HOTEL.—Mr. C. A. Davis. One-half mile from station. Accommodates ten guests. Open all the year. Rate, \$5 per week.

TEMPERANCE HOTEL.—Mr. W. Long. One-quarter of a mile from station. Accommodates twenty guests. Open all the year. Rate, \$5 per week.

## FRANKLINVILLE, N. J.

Distance, 25.3 miles. 5 trains each way on week-days; 2 on Sundays.

Running time, 50 to 65 minutes. Fare, 75 cents; 10-day excursion rate, \$1.15. Family tickets, \$25.10; quarterly, \$24.80; monthly, \$9.70; school, \$6.45.

The elevation and excellent drainage aid materially in promoting the general healthfulness of this village, which is located in a good farming region. For its four hundred residents, Franklinville provides Methodist and Presbyterian Churches, and good mail and telegraph facilities. Franklin Lake affords excellent boating and fishing.

FRANKLIN LAKE HOTEL.—Mr. F. A. Crane. One square from station. Accommodates seventy guests. Open all the year. Rates, \$6 to \$8 per week.

BOARDING-HOUSE.—Mrs. M. V. Crane. One square from station. Accommodates twenty guests. Open all the year. Rate, \$5 per week.

BOARDING-HOUSE.—Mrs. Thomas Scott. A few yards from station. Accommodates ten guests. Open May to November. Rate, \$4 per week.

NICHOLSON VILLA.—Mrs. William Nicholson. One square from station. Accommodates fifteen guests. Open May to November. Rate, \$4 per week.

**THE CARTER COTTAGE.**—Mrs. David Carter. One-half mile from station. Accommodates fifteen guests. Open all the year. Rate, \$4 per week.

**BOARDING-HOUSE.**—Mrs. W. P. Hilderbrand. One mile from station. Accommodates fifteen guests. Open May to November. Rate, \$4 per week.

**BOARDING COTTAGE.**—Mrs. Thomas Parks. One mile from station. Accommodates twenty guests. Open all the year. Rate, \$4 per week.

**BOARDING-HOUSE.**—Mrs. Curtis Campbell. Two squares from station. Accommodates twenty guests. Open all the year. Rate, \$4 per week.

**BOARDING-HOUSE AND FARM.**—Mrs. Thomas B. Lacy. One mile from station. Accommodates twenty guests. Open May to November. Rates, \$4 to \$6 per week.

## MALAGA, N. J.

Distance, 28.9 miles. 5 trains each way on week-days; 2 on Sundays. Running time, 57 to 72 minutes. Fare, 86 cents; 10-day excursion rate, \$1.30. Family tickets, \$28.70; quarterly, \$27.35; monthly, \$10.70; school, \$7.15.

Malaga is an enterprising and growing village of five hundred inhabitants, who are chiefly interested in farming, though it has large manufacturing for glass and flour. A large pond furnishes boating and fishing, while the neighborhood affords duck, quail, and rabbit shooting.

**MALAGA HOTEL.**—Mr. Joseph M. Iredell. Accommodates seventy-five guests. Open all the year. Rate, \$5 per week.

**BOARDING-HOUSE.**—Mrs. Isaac Smith. One-half mile from station. Accommodates eight guests. Open all the year. Rate, \$4.50 per week.

**BOARDING-HOUSE.**—Mrs. Aden Beckett. One-half mile from station. Accommodates ten guests. Open all the year. Rate, \$4.50 per week.

## NEWFIELD, N. J.

Distance, 31.1 miles. 5 trains each way on week-days; 2 on Sundays. Running time, 62 to 77 minutes. Fare, 93 cents; 10-day excursion rate, \$1.40. Family tickets, \$30.90; quarterly, \$29.15; monthly, \$11.40; school, \$7.60.

Newfield, the junction of the Atlantic City and Cape May lines, is a small and quiet village, but presents good advantages for a sun-

mer residence, as it is situated on an elevated site and commands a fine view of the surrounding country. There is an abundance of fruit during the season, large quantities of which are shipped to the city markets.

**STEELEMAN'S HOTEL.**—Mr. Daniel C. Steeleman. Few yards from station. Accommodates fifty guests. Open all the year. Rates, \$5 to \$8 per week.

## VINELAND, N. J.

Distance, 35.3 miles. 7 trains each way on week-days; 3 on Sundays. Running time, express 56 minutes, accommodation 81 minutes. Fare, \$1; 10-day excursion rate, \$1.50. Family tickets, \$35.10; quarterly, \$32.10; monthly, \$12.55; school, \$8.35. 360 trip ticket (good for 6 months), \$50.

The Vineland tract contains about fifty square miles of farm lands, vineyards, orchards, and gardens, on which upwards of fifteen hundred families are settled, with the flourishing city of Vineland near its centre. Vineland proper has a population of four thousand, while the township, in which North and South Vineland are included, contains eight thousand inhabitants. The surrounding country, with its comfortable homes and fine houses, bordered by shade trees, which are required by law, has the appearance of an extensive park; while its good, hard roads, which for miles are lined with evergreen hedges, make riding and driving delightful at all seasons. Its beauty, superior climate, and other advantages attract many visitors.

**PARK HOUSE.**—Mr. M. M. De Witt. Seventy-five yards from station. Accommodates forty guests. Open all the year. Rates, \$4 to \$6 per week.

**THE PAULINA.**—Mrs. C. Kemmerer. Two squares from station. Accommodates fifteen guests. Open all the year. Rates, \$4.50 to \$5 per week.

**STEVENS HOUSE.**—Mrs. C. M. Jordan. Two squares from station. Accommodates thirty guests. Open all the year. Rates, \$6 to \$8 per week.

**WAITE HOUSE.**—Mrs. N. P. Wiswell. Two squares from station. Accommodates fifteen guests. Open all the year. Rates, \$5 to \$7 per week.

BAKER HOUSE.—Mr. S. R. Fowler. One and a half squares from station. Accommodates fifty guests. Open all the year. Rates, \$7 to \$10 per week.

WYKER HOUSE.—Mrs. E. Wyker. Two squares from station. Accommodates ten guests. Open all the year. Rates, \$4 to \$6 per week.

GROVE HOUSE.—Mrs. F. E. Willson. One-quarter of a mile from station. Accommodates thirty guests. Open all the year. Rates, \$8 to \$10 per week.

SEYMOUR HOUSE.—Mrs. C. Walsh. Four squares from station. Accommodates eighteen guests. Open all year. Rates, \$3.50 to \$4 per week.

COLUMBUS COTTAGE.—Mrs. J. Campe. Three-quarters of a mile from station. Accommodates fifty guests. Rates, \$4 to \$5 per week.

FULLER HOUSE.—Mrs. S. J. Fuller. One-half of a mile from station. Accommodates six guests. Rate, \$5 per week.

## BRIDGETON BRANCH.

### MONROEVILLE, N. J.

Distance, 24.5 miles. 6 trains, each way on week-days; 2 on Sundays. Running time, 53 to 78 minutes. Fare, 73 cents; 10-day excursion rate, \$1.10. Family tickets, \$24.20; quarterly, \$24.10; monthly, \$9.40; school, \$6.25.

Monroeville is a village of nearly six hundred inhabitants, situated in a desirable section, devoted mainly to agricultural pursuits.

BOARDING-HOUSE.—Mrs. James McFarland. A few yards from station. Accommodates eight guests. Open all the year. Rates, \$6 to \$8 per week.

BOARDING-HOUSE.—Mr. Henry Garrison. A few yards from station. Accommodates eight guests. Rates, \$6 to \$8 per week.

FARM HOUSE.—Mrs. John L. Robinson. Three-quarters of a mile from station. Accommodates four guests. Open May to November. Rates, \$6 to \$8 per week.

FARM HOUSE.—Mrs. Joseph N. Peterson. One-quarter of a mile from station. Accommodates two families. Rates, \$6 to \$8 per week.

## ELMER, N. J.

Distance, 27.0 miles. 6 trains each way on week-days; 2 on Sundays. Running time, 60 to 83 minutes. Fare, 80 cents; 10-day excursion rate, \$1.20. Family tickets, \$26.70; quarterly, \$25.90; monthly, \$10.10; school, \$6.75.

Elmer, the junction of the Bridgeton and Salem Branches, is a village of about thirteen hundred inhabitants, situated in one of the richest farming sections of the State. It is rendered attractive by neat dwellings, well-graded streets, and the abundance of shade trees and shrubbery. Elmer Lake, on the outskirts of the town, furnishes good boating and fishing.

TEMPERANCE HOTEL.—Mr. John Berry. One square from station. Accommodates eight guests. Open all the year. Rate, \$5 per week.

ELMER LAKE HOTEL.—Mr. S. L. G. Murphy. One-quarter of a mile from station. Accommodates fifteen guests. Open all the year. Rate, \$7 per week.

BOARDING-HOUSE.—Mrs. M. E. Woolbert. One square from station. Accommodates ten guests. Open all the year. Rate, \$4 per week.

## HUSTED, N. J.

Distance, 31.9 miles. 5 trains each way on week-days; 2 on Sundays. Running time, 72 to 89 minutes. Fare, 95 cents; 10-day excursion rate, \$1.40. Family tickets, \$31.60; quarterly, \$29.50; monthly, \$11.55; school, \$7.70.

Husted, with the surrounding villages of Deerfield, Centreton, and Cohansey, has a population of over one thousand, and is situated in the midst of a fine agricultural country. It has Methodist and Baptist Churches, schools, telegraph and express facilities. The neighboring streams afford good boating and fishing.

DEERFIELD HOTEL.—Mr. S. S. Lewis. Three miles from station. Accommodates ten guests. Open all the year. Rate, \$5 per week.

CENTRETON HOTEL.—Mr. C. F. Gruff. One mile from station. Accommodations for fifteen guests. Open all year. Rate, \$5 per week.

BOARDING-HOUSE (Centreton).—Mr. J. R. Fitzhugh. One mile from station. Accommodates sixteen guests. Open all the year. Rate, \$4 per week.

## BRIDGETON, N. J.

Distance, 39.7 miles. 6 trains each way on week-days; 2 on Sundays.  
 Running time, express 81 minutes, accommodation 96 minutes. Fare, \$1; 10-day excursion rate, \$1.50. Family tickets, \$38.20; quarterly, \$34.25; monthly, \$13.40; school, \$8.95.

This town is beautifully located on the Cohansey Creek, in the midst of a fine agricultural district, and is the business centre of Cumberland County. Its trade is growing more extensive each year, and with reason, for its stores are as large and as well stocked as those usually found in cities with many times the population. Fortescue Beach and Sea Breeze—resorts on the Delaware Bay—are within short riding distances. Bridgeton has a population of twelve thousand, with churches of all denominations, private and public schools, gas, electric lights, and other conveniences.

**HOTEL CUMBERLAND.**—Mr. E. Hardon. Five hundred yards from station. Accommodates sixty guests. Open all the year. Rates, \$2 per day, \$9 per week.

**CENTRAL HOTEL.**—Capt. T. Vangilder. Three hundred yards from station. Accommodates thirty guests. Open all the year. Rates, \$5 to \$8 per week.

**CITY HOTEL.**—Mr. C. G. Cast. Five hundred yards from station. Accommodates fifteen guests. Open all the year. Rates, \$1 per day, \$5 per week.

**WEST JERSEY HOTEL.**—Mr. A. F. Atkinson. Four hundred yards from station. Accommodates twenty guests. Open all the year. Rate, \$5 per week.

**HOHENSTATT HOTEL.**—Mr. Jos. Racher. Three hundred yards from station. Accommodates fifty guests. Open all the year. Rates, \$2 per day, \$9 per week.

**BOARDING-HOUSE.**—Mrs. A. Pogue. One-quarter mile from station. Accommodates ten guests. Open all year. \$5 per week.

**BOARDING-HOUSE.**—Mrs. Anna M. Hall. One-half mile from station. Accommodates six guests. Open all the year. Rate, \$5 per week.

*WOODSTOWN & SWEDESBORO BRANCH.***MOUNT ROYAL, N. J.**

Distance, 13.4 miles. 5 trains each way on week-days; 2 on Sundays.

Running time, 39 minutes. Fare, 40 cents; 10-day excursion rate, 60 cents. Family tickets, \$13.20; quarterly, \$16; monthly, \$6.25; school, \$4.15.

The artistic and comfortable-looking houses forming this town are built on two wide and heavily-shaded intersecting streets; the shape of the town being that of a cross. It has a population of two hundred, with one Baptist Church. Good boating and fishing are to be had.

**BERKLEY HOTEL.**—Mr. J. Thomson, Clarksboro P. O. One-quarter of a mile from station. Accommodates twelve guests. Open all year. Rate, \$7 per week.

**CLARKSBORO, N. J.**

Distance, 14.4 miles; 6 trains each way on week-days; 2 on Sundays.

Running time, 38 to 46 minutes. Fare, 43 cents; 10-day excursion rate, 65 cents. Family tickets, \$14.20; quarterly, \$16.80; monthly, \$6.55; school, \$4.35.

Clarksboro, a town of three hundred inhabitants, with churches, telegraphic, telephonic, and express communication, is built on high ground, enjoying a reputation for healthfulness and the summer's pleasures of boating, fishing, and bathing. It has an abundance of shade and quantities of fruit trees.

**SICKLER'S HOTEL.**—Mr. Jno. R. Sickler. One-quarter mile from station. Accommodates fifteen guests. Open all year. Rate, \$7 per week.

**BOARDING-HOUSE.**—Mrs. E. Pidgeon. Directly opposite station. Accommodates two guests. Open all year. Rate, \$5 per week.

**BOARDING-HOUSE.**—Mrs. Rebecca Clement. Two squares from station. Accommodates six guests. Open all the year. Rate, \$5 per week.

**SWEDESBORO, N. J.**

Distance, 20.3 miles. 6 trains each way on week-days; 2 on Sundays.

Running time, 49 to 60 minutes. Fare, 60 cents; 10-day excursion rate, 90 cents. Family tickets, \$20.10; quarterly, \$21.15; monthly, \$8.25; school, \$5.50.

This is a pretty and prosperous village of fifteen hundred inhabitants situated on the Raccoon Creek. The surrounding country is high



and rolling, and the scenery picturesque. Sailing, boating, and fishing may be enjoyed on the lake, while game abounds in the neighborhood.

CLARK'S HOTEL.—Mr. B. C. Clark. Short distance from the station. Accommodates fifteen guests. Open all year. Rate, \$6 per week.

FORD'S HOTEL.—One-quarter mile from station. Accommodates fifteen guests. Open all year. Rate, \$6 per week.

## HARRISONVILLE, N. J.

Distance, 24.8 miles. 5 trains each way on week-days; 2 on Sundays.

Running time, 56 to 68 minutes. Fare, 71 cents; 10-day excursion rate, \$1.10. Family tickets, \$23.80; quarterly, \$24.10; monthly, \$9.40; school, \$6.25.

This town of five hundred inhabitants is situated in Gloucester County, ten miles from the Delaware River and four miles from the station; it is connected, however, with all trains by stage line. The creeks are well stocked with pike and pan-fish, and the woods and meadows abound in small game. It is a pleasant and popular interior town.

BOARDING-HOUSE.—Mrs. F. Mattson. Four miles from station. Accommodates four guests. Open all the year. Rate, \$4 per week.

BOARDING-HOUSE.—Mrs. D. Madara. Four miles from station. Accommodates four guests. Open all the year. Rates, \$4 to \$5 per week.

BOARDING-HOUSE.—Mrs. Joseph Mowers. Four miles from station. Accommodates seven guests. Open all the year. Rate, \$4 per week.

BOARDING-HOUSE.—Mrs. J. Givens. Accommodations for four guests. Open all the year. Rates, \$4 to \$5 per week.

BOARDING-HOUSE.—Mrs. J. Riley. Accommodations for five guests. Open all the year. Rates, \$4 to \$5 per week.

## WOODSTOWN, N. J.

Distance, 27.1 miles. 5 trains each way on week-days; 2 on Sundays.

Running time, 63 to 77 minutes. Fare, 81 cents; 10-day excursion rate, \$1.20. Family tickets, \$26.90; quarterly, \$26.25; monthly, \$10.25; school, \$6.85.

The seeker after rest and health and the lover of woodland rambles may here realize his desires, as this town is situated in a section of the country noted for its healthfulness and the beauty of the surrounding scenery. It provides for its seven hundred inhabitants churches and meeting-houses, telegraph and express facilities.

**FRENCH'S HOTEL.**—Mr. Samuel French. One square from station. Accommodates forty guests. Open all the year. Rates, \$2 per day, \$7 per week.

**EAST AVENUE HOTEL.**—Mrs. Smith Hewitt. A short distance from station. Accommodates forty guests. Open all the year. Rate, \$6 per week.

**FARM HOUSE.**—Mrs. Charles B. Humphreys, Sharpstown P. O. Two miles from station. Accommodates twenty guests. Open May to November. Rates upon application.

**BOARDING-HOUSE.**—Mrs. Caroline Clark. Two squares from station. Accommodates six guests. Open May to November. Rates, \$5 per week.

**BOARDING-HOUSE.**—Mrs. Elizabeth Cawley. Two squares from station. Accommodates five guests. Open May to November. Rate, \$5 per week.

## *SALEM BRANCH.*

### ALLOWAY, N. J.

Distance, 34 miles. 2 trains each way on week-days.

Running time, 78 minutes. Fare, \$1; 10-day excursion rate, \$1.50. Family tickets, \$33.80; quarterly, \$31.10; monthly, \$12.20; school, \$8.10.

For the use of its population (800) Alloway furnishes telegraph and express communication, and Baptist and Methodist Churches. It is located in a fertile and a well-watered country, and is attractively laid out. The outer section of the town is intersected with good driving roads and walks. Alloway Creek furnishes boating and fishing, and good gunning may be had during the season.

**AMERICAN HOTEL.**—Mr. B. M. Ferguson. One-half mile from station. Accommodates forty guests. Open all year. Rates, \$1.50 to \$2 per day.

**GREENWICH HOUSE.**—Mr. Chas. Tunberman. Short distance from station. Accommodates fifteen guests. Open all year. Rate, \$5 per week.

**WALNUT HILL MANSION.**—Mr. C. Crissman. Short distance from station. Accommodates fifteen guests. Open all year. Rates, \$1.00 to \$1.50 per day, \$6 to \$8 per week.

## QUINTON, N. J.

Distance, 36.8 miles. 2 trains each way on week-days.

Running time, 85 minutes. Fare, \$1; 10-day excursion rate, \$1.50. Family tickets, \$36.60; quarterly, \$33.15; monthly, \$13.00; school, \$8.70.

The terminus of the Quinton Branch has a population of six hundred, devoted chiefly to the manufacturing of glass in its various forms. It has Methodist and Baptist Churches. Alloway Creek is close by.

**BOARDING-HOUSE.**—Mr. Geo. D. Robinson. Accommodates eight guests. Rate, \$6 per week.

## SALEM, N. J.

Distance, 38.2 miles. 7 trains each way on week-days; 2 on Sundays.

Running time, 81 to 97 minutes. Fare, \$1; 10-day excursion rate, \$1.50. Family tickets, \$38.20; quarterly, \$34.25; monthly, \$13.40; school, \$8.95.

Many points of interest are within easy access of Salem. Fort Delaware is but a short distance away, and the harbor at the mouth of the creek is usually filled with pleasure or fishing craft bent on sport or profit. The numerous Delaware Bay resorts are accessible either by rail or boat. Being the seat of the county gives it an important and prominent position also. It has a population of six thousand, engaged principally in the manufacturing of glass, and has churches of all denominations, in addition to two Friends' meeting-houses. It enjoys the best facilities, and is noted for its healthfulness and desirability for homes.

**FORD HOUSE.**—Mr. C. C. Ford. One square from station. Accommodates forty guests. Rates, \$8 to \$14 per week.

**NELSON HOUSE.**—Mr. J. F. Shannon. One and a half squares from station. Accommodates fifty guests. Open all the year. Rates, \$8 to \$14 per week.

**SHAFFER HOUSE.**—Mrs. A. Luerrisson. Two squares from station. Accommodates thirty-five guests. Open all the year. Rates, \$6 to \$14 per week.

**GARWOOD HOUSE.**—Mr. Edgar G. Buck. One and a half squares from station. Accommodates forty guests. Open all the year. Rates, \$5 per week.

**BOARDING-HOUSE.**—Mrs. Charles Anderson. A few yards from station. Accommodates seven guests. Open all year. Rates, \$4 to \$6 per week.

**BOARDING-HOUSE.**—Mrs. Josiah Smith. Ten minutes' walk from station. Accommodates eight guests. Open all year. Rates, \$4.50 to \$5 per week.

## CAMDEN & ATLANTIC RAILROAD.

### COLLINGSWOOD, N. J.

Distance, 5.4 miles. 17 trains each way on week-days; 6 on Sundays.  
Running time, 23 minutes. Fare, 14 cents; 10 day excursion rate, 20 cents. Family tickets, \$5.40; quarterly, \$11.40; monthly, \$4.25; school, \$2.85.

Although the population of Collingswood is small, it is of a thrifty and enterprising nature, and attractive home-sites are placed within reach of the slender purse. The medicinal properties of Kalium Springs have received marked attention from physicians, and have proven efficacious in many complaints. Knight's Park is beautifully laid out and is a favorite playground for picnic parties.

Good boating, bathing, and fishing can be enjoyed in Newton's and Cooper's Creeks, a short distance from the village.

BOARDING-HOUSE.—Mr. W. Edwards. Three squares from station. Accommodations for five guests. Open all the year. Rates, \$5 to \$7 per week.

### HADDONFIELD, N. J.

Distance, 7.8 miles. 17 trains each way on week-days; 6 on Sundays.  
Running time, 30 minutes. Fare, 20 cents; 10-day excursion rate, 30 cents. Family tickets, \$7.80; quarterly, \$12.50; monthly, \$5; school, \$3.35.

In the heart of the most healthful surroundings, bounded by open fields, wooded hills and glens, and in a country intersected by shaded walks and drives which carry the rambler by cultivated truck farms which have made New Jersey renowned and unrivaled as a garden produce-raiser, is built this quiet and pleasing retreat. It is lighted by electricity and possesses a population of twenty-five hundred, with a bank, churches, meeting-houses, schools, and all modern facilities. The grounds of the Haddonfield Athletic Association provide opportunities for indulging in field sports, while Evans' Lake furnishes good boating and fishing.

**HADDON HOUSE.**—Mr. Thos. Baxendine. Five minutes' walk. Accommodations for thirty-five guests. Open all the year. Rates, \$8 to \$10 per week.

**TEMPERANCE HOUSE.**—Mr. Geo. D. Stillwell. A few minutes' walk from station. Accommodations for thirty-five guests. Open all the year. Rates, \$8 to \$10 per week.

**CARR MANSION.**—Mr. C. W. Carr. Five minutes from station. Accommodations for twenty-five guests. Open all the year. Rates, \$6 to \$10 per week.

**BOARDING-HOUSE.**—Mrs. Stoy. A short distance from station. Accommodations for twenty guests. Open all the year. Rates, \$6 to \$10 per week.

## MARLTON, N. J.

Distance, 14.4 miles. 4 trains each way on week-days; 2 on Sundays. Running time, 50 minutes. Fare, 36 cents; 10-day excursion rate, 58 cents. Family tickets, \$14.40; quarterly, \$17.25; monthly, \$6.70; school, \$4.45.

This village is quite picturesquely located, and harbors a quiet and restful air for summer boarders.

It has a population of six hundred, who use the two churches and a Friends' meeting-house, which are located at Cropwell, a mile distant; and they also enjoy telegraphic and express service. A large mill-pond nearby presents good boating and fishing.

**MARLTON HOTEL.**—Mr. J.P. Jones. Six hundred yards from station. Accommodations for forty guests. Open all the year. Rates, \$6 to \$8 per week.

**FARM HOUSE.**—Mr. James Mitchell. One mile and a half from station. Accommodation for fifteen guests. Open May 1st to November. Rates, \$5 to \$6 per week.

## MEDFORD, N. J.

Distance, 19.5 miles. 4 trains each way on week-days; 2 on Sundays. Running time, 60 minutes. Fare, 49 cents; 10-day excursion rate, 78 cents. Family tickets, \$19.50; quarterly, \$21; monthly, \$8.15; school, \$5.40.

The straight, well-graded streets, bordered with trees and artistic houses, give a prepossessing appearance to this town. It is situated

on a branch of Rancocas Creek, and in the centre of a country held in high esteem by summer sojourners. It has telegraph and express facilities, and several churches, in addition to a Friends' meeting-house, for the accommodation of its twelve hundred inhabitants.

INDIAN CHIEF HOTEL.—Mr. Chas. Straugh. One-quarter mile from station. Accommodations for twenty guests. Open all the year. Rates, \$2 per day, \$10 per week.

MEDFORD HOUSE.—Mr. Frank Lightcap. One-quarter mile from station. Accommodations for thirty guests. Rates, \$1.25 per day, \$7 to \$8 per week.

## KIRKWOOD, N. J.

Distance, 12.5 miles. 10 trains each way on week-days; 2 on Sundays.

Running time, 40 minutes. Fare, 28 cents; 10-day excursion rate, 44 cents. Family tickets, \$11.10; quarterly, \$13.80; monthly, \$5.50; school, \$3.65.

This station is within a few minutes' walk of where the celebrated Lakeside Park picnic grounds of the Camden & Atlantic Railroad are located, and where picnics abound during the summer months.

Pleasant groves and shady walks, grounds for games, tables for picnic lunching, seats for lounging, a pavilion for dancing, and boats for rowing on the lake, are a few of the attractions which make it a favorite day excursion for churches, schools, and social bodies.

Kirkwood has a population of 700 scattered here and there within a radius of two miles. It has churches, schools, and good stores.

WHITE HORSE HOTEL.—Mr. E. B. Davis. One-quarter of a mile from station. Accommodates twenty guests. Open all the year. Rates, \$5 to \$7 per week.

LAUREL SPRING INN.—One mile from station. Accommodates sixty guests. Open all the year. Rates, \$7 to \$9 per week.

## LINDENWOLD, N. J.

Distance, 13.4 miles. 10 trains each way on week-days; 2 on Sundays.

Running time, 43 minutes. Fare, 30 cents; 10-day excursion rate, 48 cents. Family tickets, \$11.90; quarterly, \$14; monthly, \$5.75; school, \$3.85.

Lindenwold has but a small population, with its homes built mainly on a hill, affording a splendid view of the surrounding country.

FARM HOUSE.—Mr. J. Coles. Open all the year. Accommodations for twelve guests. Rates, \$5 to \$7 per week.

FARM HOUSE.—Mr. Jesse Lanning. Short distance from station. Accommodations for eight guests. Rates, \$5 to \$6 per week.

### LUCASTON, N. J.

Distance, 15.4 miles. 10 trains each way on week-days; 2 on Sundays. Running time, 50 minutes. Fare, 32 cents; 10-day excursion rate, 52 cents. Family tickets, \$12.90; quarterly, \$14.20; monthly, \$6; school, \$4.

The station for the bustling little village of Gibbsboro, to which passengers are conveyed by cars of the Lucaston Street-Railway Co.

Although its population is small, their thrifty nature is speedily carrying it toward prosperity. Three lakes, in addition to adding to the beauty of the town, afford excellent opportunities for boating and fishing. The surrounding neighborhood is well stocked with game. Gibbsboro has an Episcopal Church and a good public school.

GIBBSBORO HOUSE.—Mr. W. M. Snyder. One mile from station. Accommodates ten guests. Rate, \$5 per week.

### BERLIN, N. J.

Distance, 17.5 miles. 10 trains each way on week-days; 2 on Sundays. Running time, 50 minutes. Fare, 39 cents; 10-day excursion rate, 62 cents. Family tickets, \$15.60; quarterly, \$15.25; monthly, \$6.50; school, \$4.35.

Situated in one of the finest agricultural sections of Camden County, the farms, with their general aspect of thrift and prosperity, betoken an energy on the part of the inhabitants to make the best use of the gifts Nature has bestowed upon them. The Methodist Camp-Meeting Association has secured grounds within a few minutes' walk of the station.

Berlin, with its population of eight hundred, has two schools and several churches.

CAKE'S HOTEL.—Mr. O. A. Small. One-quarter of a mile from station. Accommodations for ten guests. Open all the year. Rates, \$5 to \$7 per week.

CREED'S HOTEL.—Mr. Oliver Creed. One-half mile from station. Accommodations for ten guests. Rates, \$5 to \$7 per week.

## ATCO, N. J.

Distance, 20.1 miles. 6 trains each way on week-days; 2 on Sundays.  
Running time, 56 minutes. Fare, 45 cents; 10-day excursion rate, 72 cents. Family tickets, \$17.90; quarterly, \$15.80; monthly, \$6.95; school, \$4.65.

The country about here is attractive, and the rapidity of its growth is testifying to its popularity. As it is situated in the fruit belt, summer boarders may revel in the healthful, fresh fruit plucked from the tree and vine. It has three churches, and good mail and telegraph service.

WOODLAND HOUSE.—Mr. Charles A. Woodland. A few yards from station. Accommodates forty-five guests. Open all the year. Rates, \$5 to \$10 per week.

## WATERFORD, N. J.

Distance, 23.8 miles. 6 trains each way on week-days; 2 on Sundays.  
Running time, 64 minutes. Fare, 52 cents; 10-day excursion rate, 83 cents. Family tickets, \$20.80; quarterly, \$16.90; monthly, \$7.65; school, \$5.10.

From what was a mere congregation of a few houses a short time ago, this town has grown into quite a settlement, due to the essential elements of health which it possesses to a marked degree. It has now a population of nearly five hundred, with churches and schools.

BISBEE HOUSE.—Mr. W. O. Bisbee. Accommodates twelve guests. Open all year. Rate, \$7 per week.

## ANCORA, N. J.

Distance, 25.9 miles. 4 trains each way on week-days; 2 on Sundays.  
Running time, 69 minutes. Fare, 57 cents; 10-day excursion rate, 92 cents. Family tickets, \$22.90; quarterly, \$17.50; monthly, \$8.05; school, \$5.35.

Though small, Ancora is a splendid place to spend the summer months, as the surroundings are healthy, and farm life can be enjoyed without stint. Large cranberry bogs are numerous in the neighborhood. The inhabitants number three hundred, with a Union Church at a convenient distance.

BLUE ANCHOR HOTEL.—W. Hankins. Three miles from station. Accommodates twenty-five guests. Open all the year. Rates, \$5 to \$8 per week.



FARM HOUSE.—Mrs. John W. Butterton. Elm P. O. One and a half miles from station. Accommodates six guests. Open May to November. Rate, \$6 per week.

FARM HOUSE.—Mrs. Joseph M. Wilson. One and a half miles from station. Accommodates twelve guests. Open May to November. Rates, \$5 to \$7 per week.

BOARDING-HOUSE.—Mrs. J. E. Albeson. One-quarter mile from station. Accommodates five guests. Open May to November. Rate, \$5 per week.

### WINSLOW JUNCTION, N. J.

Distance, 28.2 miles. 4 trains each way on week-days; 2 on Sundays. Running time, 75 minutes. Fare, 64 cents; 10-day excursion rate, \$1.02. Family tickets, \$25.40; quarterly, \$17.75; monthly, \$8.40; school, \$5.60.

Winslow Junction is the station for Winslow, which enjoys a reputation for healthfulness that is rapidly extending itself, and is certain to shortly attract those suffering from the effects of disease, and seeking to recuperate their shattered constitutions.

WINSLOW INN.—Mrs. O. Falkenberg. One-quarter mile from station. Accommodations for fifty guests. Rates, \$2.50 to \$3 per day, \$12 to \$18 per week.

### HAMMONTON, N. J.

Distance, 31.4 miles. 5 trains each way on week-days; 2 on Sundays. Running time, express 1 hour, accommodation 1 hour and 24 minutes. Fare, 71 cents; 10-day excursion rate, \$1.14. Family tickets, \$28.50; quarterly, \$18.90; monthly, \$9; school, \$6.

Not content alone to raise some of the best fruit of this section of the State, Hammonton branches out into a prosperous manufacturing centre, with four thousand inhabitants, five churches, telegraphic and express facilities. Its location, sandy soil, and pure atmosphere have contributed to give this town much prominence. As a health resort, and as a sanitarium, its renowned and highly-esteemed beneficial reliefs are widely known. A lake two miles long, picturesque from every point, furnishes good boating, fishing, and bathing.

THE SANITARIUM—SUMMIT GROVE PLACE.—Miss S. S. Nivison, M. D. One mile from Hamonton. Accommodations for thirty guests. Open all year. Rates, \$2.50 to \$5 per day, \$15 to \$35 per week.

HAMMONTON HOTEL.—Mr. Alexander Aitken. A short distance. 'Bus meets all trains. Accommodations for twenty-five guests. Open all the year. Rates, \$1.50 to \$2 per day, \$6 to \$9 per week.

HOTEL COLUMBIA.—Mrs. A. Bowker. One square from station. Accommodations for twenty guests. Open all the year. Rates, \$1.50 to \$2 per day, \$9 per week.

### EGG HARBOR CITY, N. J.

Distance, 42.4 miles. 3 trains each way on week-days; 2 on Sundays.

Running time, express 1 hour 7 minutes, accommodation 1 hour 45 minutes. Fare, 99 cents; 10-day excursion rate, \$1.45. Family tickets, \$39.60; monthly, \$13.65; school, \$9.10.

This town of three thousand inhabitants is in the centre of a district celebrated for its fruit, grapes, and wine. The wine from the region has a widespread reputation. In the city are fine churches of all denominations, and a telegraph station and good mail service.

The healthfulness of the surrounding country, dotted with the picturesque vineyards, commend it as a desirable resort. The gunning is good, as deer, hare, partridges, and other game are plentiful.

NEW YORK HOTEL.—Mr. H. Kuehnle. Close to station. Accommodations for thirty guests. Open all the year. Rate, \$7 per week.

GOLDEN EAGLE HOTEL.—Mr. J. Reishenbach. Two squares from station. Accommodations for ten guests. Open all the year. Rate, \$6 per week.

AMERICAN HOUSE.—Mr. William Zimmer. One square from station. Accommodations for thirty guests. Open all the year. Rates, \$5 to \$7 per week.

ATLANTIC HOTEL.—Mrs. E. Meister. One square from station. Accommodations for twenty guests. Open all the year. Rate, \$6 per week.

CONTINENTAL HOTEL.—Mr. Jacob Detwiler. One and one-half squares from station. Accommodations for thirty guests. Open all the year. Rate, \$7 per week.

## ABSECON, N. J.

Distance, 53.1 miles. 3 trains each way on week-days; 2 on Sundays.

Running time, express 1 hour 23 minutes, accommodation, 2 hours. Fare, \$1.10; 10-day excursion rate \$1.50. Family tickets, \$45; monthly, \$16.35; school, \$10.90.

Absecon, on account of its nearness to Atlantic City, six miles distant, combines the advantages of country as well as sea-shore life. It is situated on Absecon Bay, and is a well-known and favorite resort for the gunner and angler. Well-kept roads lead to Atlantic City, Somers' Point, and Port Republic. It has Methodist and Presbyterian Churches.

ROCKINGHAM HOTEL.—Mr. J. C. Price. Short distance from station. Accommodates fifteen guests. Open all year. Rates, \$8 to \$10 per week.

BOARDING-HOUSE—Mrs. A. Hammell. Accommodates seven guests. Rate, \$5 per week.

# INDEX.

---

	PAGE		PAGE
Absecon, N. J. . . . .	115	Chestnut Hill, Philadelphia . . . . .	46
Aldham, Pa. . . . .	24	Cheyney, Pa. . . . .	75
Allen Lane, Philadelphia . . . . .	45	Clarksboro, N. J. . . . .	104
Alloway, N. J. . . . .	106	Claymont, Del. . . . .	58
Ancora, N. J. . . . .	112	Clayton, N. J. . . . .	98
Andalusia, Pa. . . . .	38	Clifton, Pa. . . . .	64
Angora, Philadelphia . . . . .	62	Collingswood, N. J. . . . .	108
Ardmore, Pa. . . . .	12	Concord, Pa. . . . .	71
Atco, N. J. . . . .	112	Conshohocken, Pa. . . . .	27
Bala, Pa. . . . .	25	Cornwell's, Pa. . . . .	38
Bellevue, Del. . . . .	59	Cresheim Branch . . . . .	48
Berlin, N. J. . . . .	111	Croydon, Pa. . . . .	39
Berwyn, Pa. . . . .	17	Crum Lynne, Pa. . . . .	54
Betzwood, Pa. . . . .	29	Cynwyd, Pa. . . . .	26
Beverly, N. J. . . . .	81	Darby, Pa. . . . .	51
Birmingham, N. J. . . . .	90	Darlington, Pa. . . . .	74
Bonnafton, Philadelphia . . . . .	51	Daylesford, Pa. . . . .	18
Bordentown, N. J. . . . .	84	Delair, N. J. . . . .	77
Bradford Hills, Pa. . . . .	22	Delanco, N. J. . . . .	81
Brandywine Summit, Pa. . . . .	72	Devault, Pa. . . . .	24
Bridesburg, Philadelphia . . . . .	33	Devon, Pa. . . . .	17
Bridgeton, N. J. . . . .	103	Downingtown, Pa. . . . .	22
Bristol, Pa. . . . .	39	Dudley, N. J. . . . .	85
Brown's Mills-in-the-Pines, N. J. . . . .	90	Eddington, Pa. . . . .	38
Bryn Mawr, Pa. . . . .	13	Eddystone, Pa. . . . .	56
Burlington, N. J. . . . .	82	Edge Moor, Del. . . . .	60
Burmout, Pa. . . . .	64	Edgewater Park, N. J. . . . .	82
Bustleton, Philadelphia . . . . .	35	Egg Harbor City, N. J. . . . .	114
Cambridge, N. J. . . . .	80	Elmer, N. J. . . . .	102
Carpenter, Philadelphia . . . . .	45	Elwyn, Pa. . . . .	69
Chadd's Ford, Pa. . . . .	72	Fairville, Pa. . . . .	73
Chester, Pa. . . . .	56	Fern Hill, Pa. . . . .	23
Chester Heights, Pa. . . . .	71	Fernwood, Pa. . . . .	63

PAGE	PAGE		
Fifty-eighth Street, Philadelphia . . .	50	Lindenwold, N. J. . . . .	110
Fifty-second Street, Philadelphia . . .	9	Linwood, Pa. . . . .	58
Florence, N. J. . . . .	83	Lucaston, N. J. . . . .	111
Folcroft, Pa. . . . .	52	Malaga, N. J. . . . .	99
Fort Hill, Pa. . . . .	49	Malvern, Pa. . . . .	19
Forty-ninth Street, Philadelphia . . .	62	Manayunk, Philadelphia . . . . .	26
Frankford, Philadelphia . . . . .	32	Maple Shade, N. J. . . . .	86
Franklinville, N. J. . . . .	98	Markham, Pa. . . . .	71
Frazer, Pa. . . . .	20	Marlton, N. J. . . . .	109
Germantown (Cheltenham Ave.), Philad'a	43	Masonville, N. J. . . . .	88
Girard Avenue, Philadelphia . . . . .	9	Medford, N. J. . . . .	109
Glassboro, N. J. . . . .	97	Media, Pa. . . . .	68
Glen Loch, Pa. . . . .	21	Merchantville, N. J. . . . .	85
Glen Mills, Pa. . . . .	74	Merion, Pa. . . . .	10
Glenolden, Pa. . . . .	53	Monroeville, N. J. . . . .	101
Glen Riddle, Pa. . . . .	70	Mont Clare, Pa. . . . .	30
Gloucester, N. J. . . . .	93	Moore, Pa. . . . .	53
Gordon Heights, Del. . . . .	60	Moorestown, N. J. . . . .	87
Gray's Ferry, Philadelphia . . . . .	50	Morrisville, Pa. . . . .	41
Greene Hill, Pa. . . . .	23	Morton, Pa. . . . .	65
Green Tree, Pa. . . . .	19	Mount Holly, N. J. . . . .	89
Grubb's Landing, Del. . . . .	59	Mount Moriah, Philadelphia . . . . .	50
Haddonfield, N. J. . . . .	108	Mount Royal, N. J. . . . .	104
Hainesport, N. J. . . . .	88	Moylan, Pa. . . . .	68
Hammonton, N. J. . . . .	113	Narberth, Pa. . . . .	11
Harrisonville, N. J. . . . .	105	Newfield, N. J. . . . .	99
Hartford, N. J. . . . .	88	New Lisbon, N. J. . . . .	90
Haverford, Pa. . . . .	12	Norristown, Pa. . . . .	28
Highland, Philadelphia . . . . .	46	Norwood, Pa. . . . .	53
Holly Oak, Del. . . . .	59	Oakbourne, Pa. . . . .	75
Holmesburg, Philadelphia . . . . .	34	Overbrook, Pa. . . . .	10
Holmesburg Junction, Philadelphia . .	34	Palmyra, N. J. . . . .	78
Husted, N. J. . . . .	102	Paoli, Pa. . . . .	18
Kennett, Pa. . . . .	74	Park, Philadelphia . . . . .	25
Kinkora, N. J. . . . .	83	Paschall, Philadelphia . . . . .	51
Kirkland, Pa. . . . .	23	Pensauken, N. J. . . . .	86
Kirkwood, N. J. . . . .	110	Perkiomen, Pa. . . . .	29
Lamokin, Pa. . . . .	57	Philadelphia & Delaware County R. R.,	63
Lansdowne, Pa. . . . .	63	Phoenixville Branch . . . . .	23
Lenni, Pa. . . . .	70	Phoenixville, Pa. . . . .	31
Lenola, N. J. . . . .	86	Pickering, Pa. . . . .	24
Liddonfield, Pa. . . . .	35		

	PAGE		PAGE
Pierson's, Philadelphia . . . . .	36	Tullytown, Pa. . . . .	40
Pitman, N. J. . . . .	96	Tulphocken, Philadelphia . . . . .	44
Port Providence, Pa. . . . .	30		
Primos, Pa. . . . .	65	Upsal, Philadelphia . . . . .	44
Queen Lane, Philadelphia . . . . .	43	Villa Nova, Pa. . . . .	14
Quinton, N. J. . . . .	107	Vincentown, N. J. . . . .	92
		Vineland, N. J. . . . .	100
Radnor, Pa. . . . .	15		
Ridley Park, Pa. . . . .	54	Wallingford, Pa. . . . .	66
Riverside, N. J. . . . .	80	Waterford, N. J. . . . .	112
Riverton, N. J. . . . .	78	Wawa, Pa. . . . .	70
Rosedale, Pa. . . . .	73	Wayne, Pa. . . . .	15
Rosemont, Pa. . . . .	14	Wellwood, N. J. . . . .	85
		Wenonah, N. J. . . . .	95
St. David's, Pa. . . . .	15	West Chester, Pa. . . . .	76
Salem, N. J. . . . .	107	West Chester Branch . . . . .	23
Secane, Pa. . . . .	65	West Laurel Hill, Pa. . . . .	26
Sewell, N. J. . . . .	96	Westmoreland, Pa. . . . .	42
Sharon Hill, Pa. . . . .	52	West Palmyra, N. J. . . . .	77
Shawmont, Pa. . . . .	27	Westtown, Pa. . . . .	75
Ship Road, Pa. . . . .	21	Westville, N. J. . . . .	93
Smithville, N. J. . . . .	89	White Hill, N. J. . . . .	84
Spring Mill, Pa. . . . .	27	Whiteland, Pa. . . . .	21
Stanwick, N. J. . . . .	87	Whitford, Pa. . . . .	21
Strafford, Pa. . . . .	16	Wilmington, Del. . . . .	60
Swarthmore, Pa. . . . .	66	Winslow Junction, N. J. . . . .	113
Swedesboro, N. J. . . . .	104	Wissahickon Heights, Philadelphia . . . . .	46
		Wissinoming, Philadelphia . . . . .	33
Tacony, Philadelphia . . . . .	33	Woodbury, N. J. . . . .	93
Taylor's, N. J. . . . .	80	Woodstown, N. J. . . . .	105
Thurlow, Pa. . . . .	57	Wynnewood, Pa. . . . .	11
Torresdale, Philadelphia . . . . .	36		
Trainer, Pa. . . . .	58	Zermatt, Pa. . . . .	23
Trenton, N. J. . . . .	41		

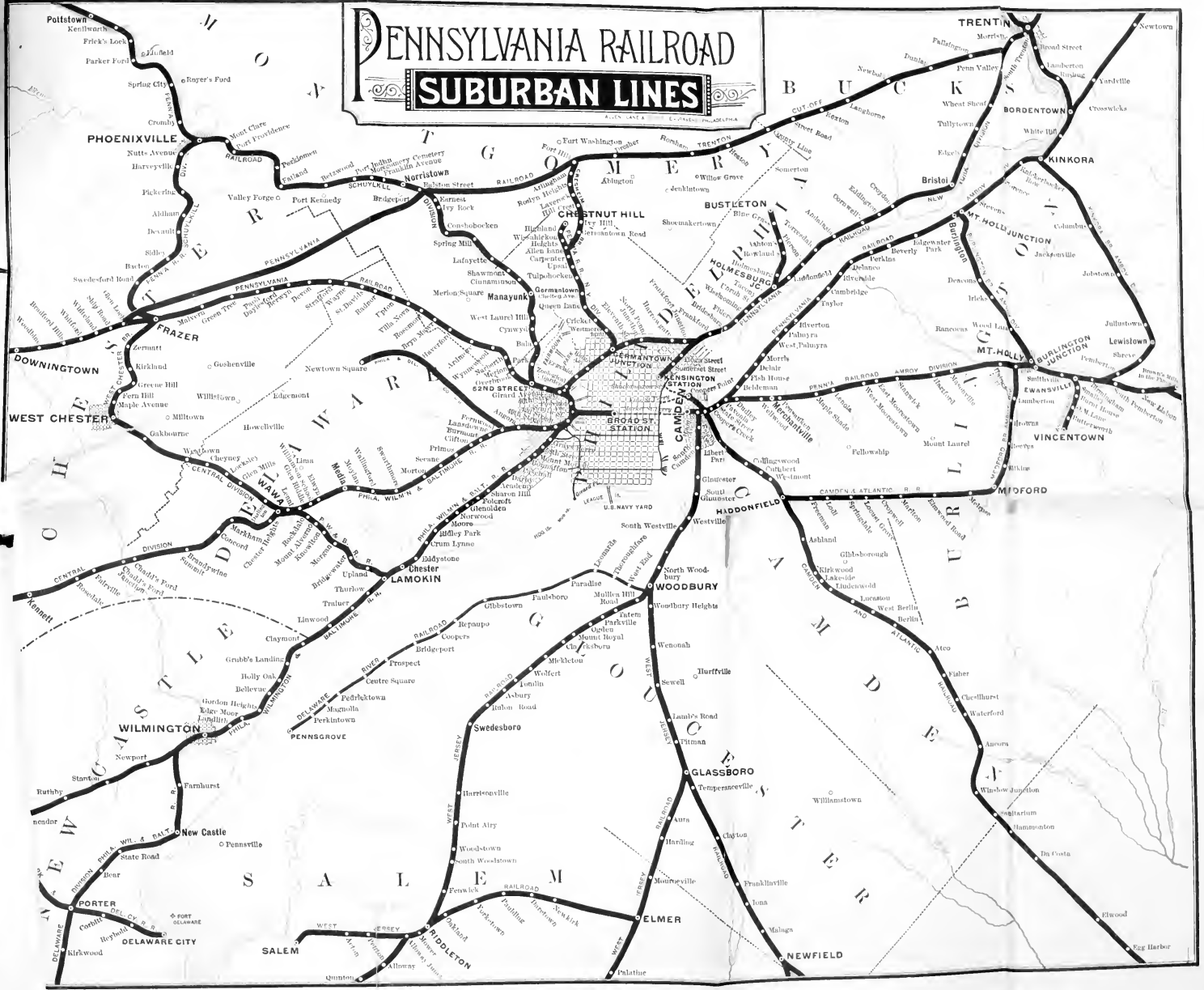






# PENNSYLVANIA RAILROAD

## SUBURBAN LINES

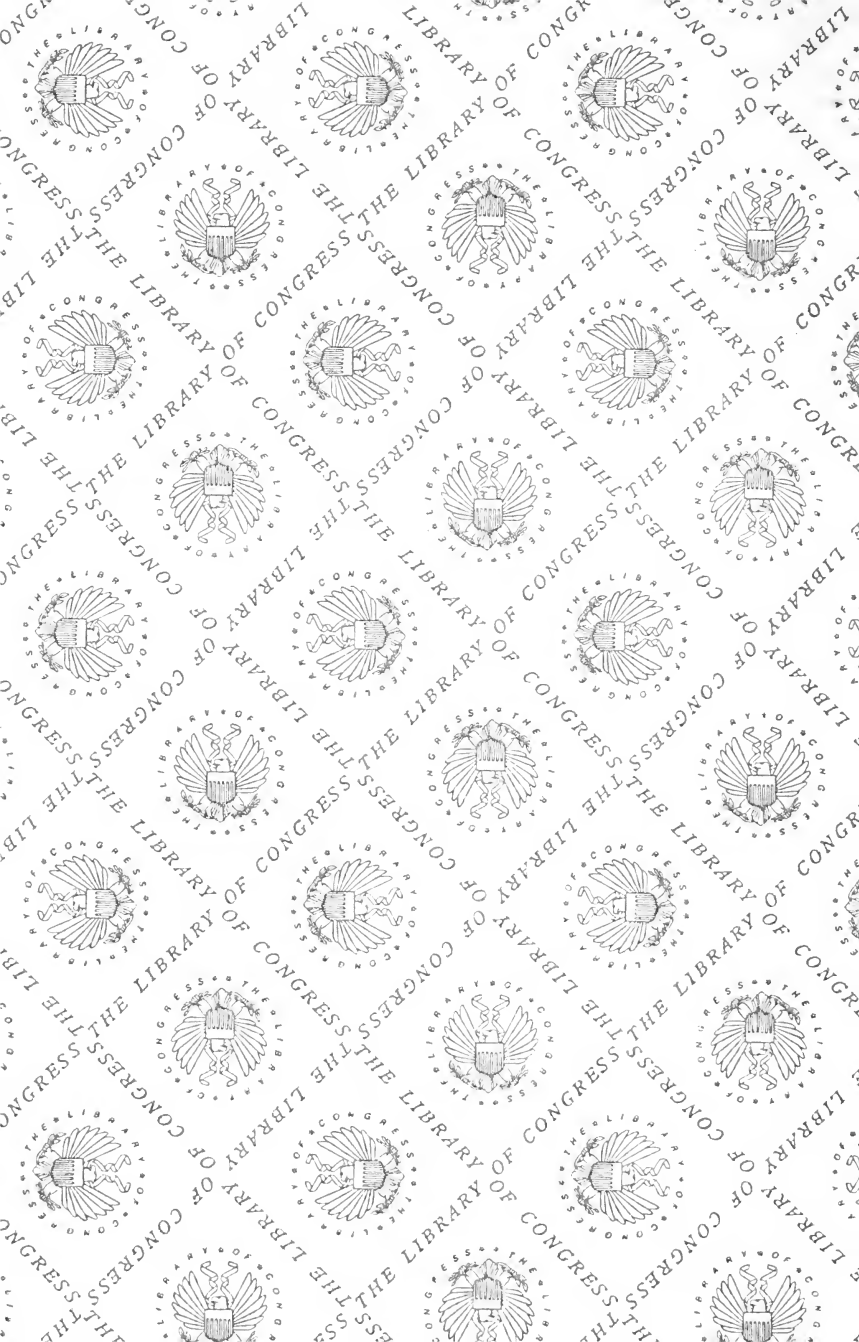


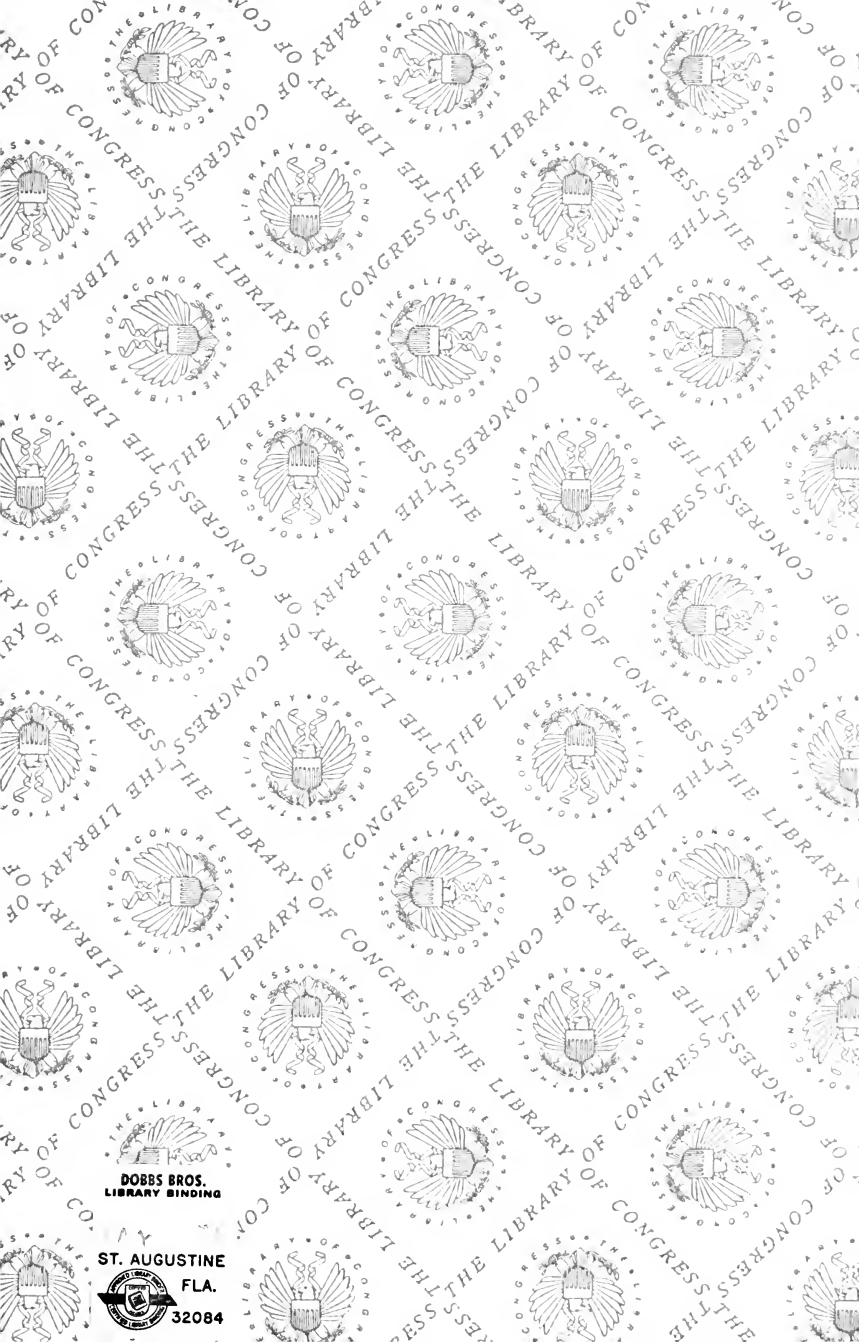
RD 225











**DOBBS BROS.  
LIBRARY BINDING**

**ST. AUGUSTINE**

**FLA.**

**32084**



LIBRARY OF CONGRESS



00012309910